

Twenty-six years ago I first met Buckle, and, upon my asking him why he had not taken part in the international tournament of '51, he told me that his engagements at the time on the Continent prevented him from doing so.

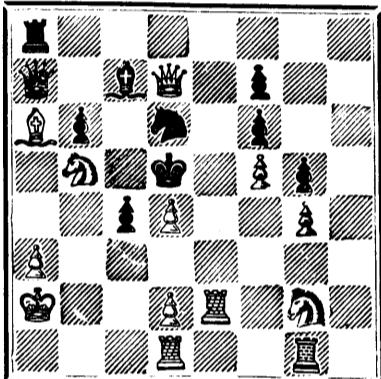
The seventeenth game between Messrs. Mason and Potter terminated in favour of the former, who had the best of it throughout. The eighteenth was drawn, though Mr. Mason obtained such an advantage in the opening as should, we think, if vigorously utilised, have resulted in another victory for him.

The match between Messrs. Mason and Potter will be memorable as one of the closest struggles on record. Nineteen games have already been played, of which Mr. Mason has won five, Mr. Potter four, and ten have been drawn; but, as all the drawn games beyond eight are counted at half a point to each side, the score in the match stands: Mason, 6; Potter, 5.

PROBLEM No. 242

By J. G. SLATER.

BLACK.



WHITE

White to play and mate in three moves.

CHESS IN ENGLAND.

GAME 387TH.

(From Land and Water.)

Eighteenth game in the Mason and Potter match.

(Queen's Pawn Opening.)

WHITE.—(Mr. Potter.) BLACK.—(Mr. Mason.)

- 1. P to Q4 1. P to K3
2. P to K3 2. Kt to KB3
3. Kt to KB3 3. P to QB4
4. B to Q3 4. Kt to B3
5. P to B3 (a) 5. P to Q4
6. Castles 6. B to Q3
7. QKt to Q2 7. Castles
8. R to Ksq 8. P to K4
9. P takes P 9. Kt takes P
10. Kt takes Kt 10. B takes Kt
11. P to KR3 11. B to B2
12. P to QKt3 12. P to QKt3
13. B to Kt2 13. Q to Q3
14. Kt to Bsq (b) 14. B to Kt2
15. Q to B2 15. P to B5 (c)
16. B to K2 (d) 16. KR to Qsq
17. QR to Qsq 17. Q to K3
18. P takes P (e) 18. P takes P
19. R takes R (ch) (f) 19. B takes R
20. Q to R4 20. B to Q4
21. P to B3 21. P to QR3
22. P to K4 22. P to QKt4
23. Q to B2 23. B to Kt2
24. B to Bsq 24. B to Kt3 (ch)
25. K to Rsq 25. Q to K4 (g)
26. B to K3 26. B takes B
27. Kt takes B 27. R to Qsq
28. R to Qsq 28. R to Ksq.

Drawn by consent (h)

NOTES.

- (a) This attempt to evade the normal course of the opening meets with its desert, viz., White gets a very bad game. He should in any case wait and see if the opponent brings his KB to K2, or Q3. In the latter eventuality P to Q B4 is an absolute necessity.
(b) Better no doubt than Kt to B3, but the first player ought not to be thus early acting upon the defensive.
(c) We doubt the advisability of this advance.
(d) Obviously if 16 P takes P, P takes P, 17 B takes P, then Q to B3.
(e) B to B3 is probably better.
(f) Q to R4 at once is preferable.
(g) He can almost sacrifice the Knight, e.g., 25 Kt takes P, 26 P takes Kt, B takes P (threatening Q takes R P ch) 27 B to B3, B takes Q, 28 R takes Q, P takes R, 29 B takes R, so that this combination would fall simply on account of the position of Black's QR. Mr. Mason is evidently not aware of the strength of his position, or he would play R to Qsq, threatening the above combination. White must in that case provide against it, and in doing so could not but be much enfeebled.
(h) White is now pretty well out of his difficulties, but his remaining weaknesses are such that he has no chance of winning. Nor can Mr. Mason expect to do more than draw, for White on his next move would play Kt to Kt4, and there would then be nothing for either side to work upon.

SOLUTIONS

Solution of Problem No. 240.

- WHITE. BLACK.
1. Kt to K3 1. B takes Kt
2. R on B sq to Kt sq 2. B takes R
3. R takes B dis mate

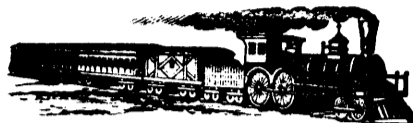
Solution of Problem for Young Players No. 238.

- WHITE. BLACK.
1. B to Q Kt3 1. K moves
2. K to Q7 2. K moves
3. Kt mates.

PROBLEM FOR YOUNG PLAYERS, No. 239.

- WHITE. BLACK.
K at KB5 K at K6
R at KB2 Kt at QB6
B at Ksq Pawns at KB3, and
Kt at KB4 Q B4
Pawn at K Kt 2

White to play and mate in three moves.



INTERCOLONIAL RAILWAY. SUMMER ARRANGEMENT, Commencing 14th July, 1879.

THROUGH EXPRESS PASSENGER TRAINS run DAILY (except Sundays) as follows:—

Table with 2 columns: Train Name, Time. Includes Point Levi, River du Loup, Trois Pistoles (Dinner), Rimouski, Campbellton (Supper), Dalhousie, Bathurst, Newcastle, Moncton, St. John, Halifax.

These Trains connect at Point Levi with the Grand Trunk Trains leaving Montreal at 9.00 o'clock p.m., and at Campbellton with the Steamer City of St. John, sailing Wednesday and Saturday mornings for Gaspé, Percé, Paspébiac, &c. &c.

The trains to Halifax and St. John run through to their destination on Sunday.

The Pullman Car leaving Montreal on Monday, Wednesday and Friday runs through to Halifax, and that leaving on Tuesday and Thursday, to St. John.

SUMMER EXCURSION TICKETS may now be obtained via rail and steamer to the unrivalled Sea Bathing, Boating and Fishing resorts on the Lower St. Lawrence, Metapedia, Restigouche, Bay Chaleur, Gaspé, Prince Edward Island and the Maritime Provinces.

G. W. ROBINSON, Agent, 120 St. François Xavier Street. (Old Post Office Building.) Montreal.

D. POTTINGER, Chief Superintendent.

The Scientific Canadian

MECHANICS' MAGAZINE, AND PATENT OFFICE RECORD, A MONTHLY JOURNAL

Devoted to the advancement and diffusion of Practical Science, and the Education of Mechanics.

THE ONLY SCIENTIFIC AND MECHANICAL PAPER PUBLISHED IN THE DOMINION.

PUBLISHED BY THE BURLAND-DESBARATS LITH. CO.

OFFICES OF PUBLICATION: 5 and 7 Bleury Street, Montreal.

G. B. BURLAND, General Manager.

F. N. BOXER, ARCHITECT & CIVIL ENGINEER, Editor.

TERMS:

- One copy, one year, including postage... \$2.00
One copy, six months, including postage... 1.10
Subscriptions to be paid in ADVANCE.

The following are our advertising rates:—For one monthly insertion, 10 cts. per line; for three months, 9 cts. per line; for six months, 8 cts. per line; for one year, 7 cts. per line; one page of illustration, including one column description, \$30; half-page of illustration, including half column description, \$20; quarter-page of illustration, including quarter column description, \$10.

10 per cent. off on cash payments. INVENTIONS AND MACHINERY, &c., or other matter of an original, useful, and instructive character, and suitable for subject matter in the columns of the MAGAZINE, and not as an advertisement, will be illustrated at very reduced rates.

REMITTING MONEY.—All remittances of money should be in the form of postal-orders. When these are not available, send money by registered letters, checks or drafts, payable to our order. We can only undertake to become responsible for money when sent in either of the above ways.

This journal is the only Scientific and Mechanical Monthly published in Canada, and its value as an advertising medium for all matter connected with our Manufactories, Foundries, and Machine Shops, and particularly to Inventors, is therefore apparent.

50 Perfumed Chromo and Lace Cards, name in gold in fancy case, 10c. Davids & Co., Northford, Ct.

\$777 A YEAR and expenses to agents. Outfit free. Address: P.O. VICKERY, Augusta, Maine.

FURNITURE!

Parties about furnishing will find a LARGE and VARIED ASSORTMENT at

SAMO'S,

189 Yonge Street, ALBERT HALL, Toronto.



SAINT ANNE, OTTAWA RIVER.

NOTICE TO CONTRACTORS.

SEALED TENDERS addressed to the Secretary of Public Works, and endorsed "Tender for Canal and Lock at St. Anne," will be received at this office until the arrival of the Eastern and Western mails on FRIDAY, the 10th DAY OF OCTOBER next, for the construction of a Lock and the formation of approaches to it on the landward side of the present lock at St. Anne.

A map of the locality, together with plans and specification of the works to be done, can be seen at this office and at the Resident Engineer's office at St. Anne, on and after SATURDAY, the 27th DAY OF SEPTEMBER next, at either of which places printed forms of Tender can be obtained.

Contractors are requested to bear in mind that tenders will not be considered unless made strictly in accordance with the printed forms, and in the case of firms, except there are attached the actual signatures, the nature of the occupation and residence of each member of the same; and further, an accepted Bank cheque for the sum of \$2,000 must accompany the Tender, which sum shall be forfeited if the party tendering declines entering into contract for the works, at the rates and on the terms stated in the offer submitted.

The cheque thus sent in will be returned to the respective parties whose tenders are not accepted.

For the due fulfilment of the contract, satisfactory security will be required by the deposit of money to the amount of five per cent on the bulk sum of the contract; of which the sum sent in with the Tender will be considered a part.

Ninety per cent. only of the progress estimates will be paid until the completion of the work.

To each Tender must be attached the actual signatures of two responsible and solvent persons, residents of the Dominion, willing to become sureties for the carrying out of these conditions, as well as the due performance of the works embraced in the Contract.

This Department does not, however, bind itself to accept the lowest or any tender.

By order, F. BRAUN, Secretary.

Department of Railways and Canals, Ottawa, 29th August, 1879.

THE Canadian Spectator,

A high-class Weekly Journal,

EDITED BY THE

Reverend A. J. BRAY.

SUBSCRIPTION: \$2.00 PER ANNUM.

OFFICES: 162 St. James Street, Montreal, and 4 Toronto Street, Toronto.

THE MILTON LEAGUE.

"Give me the liberty to know, to think, to believe, and to utter freely, according to conscience, above all liberties.—Milton."

PUBLICATIONS:

- BRAY, REV. ALFRED J. The Churches of Christendom, cloth... \$1.00
BROWN, REV. J. HALDWIN. The Doctrine of Annihilation in the Light of the Gospel of Love... 50
DALE, REV. R. W. Protestantism: Its Ultimate Principle... 60
The Ten Commandments... 60
DAWSON, GEO., M.A. Prayers, and a Discourse on Prayer... 50
MCLEOD, NORMAN, D.D. Scotch Pebbles... 15
TIPPLE, Rev. S. A. Echoes of Spoken Words... 50

"Here is a new wave of literature, and of the deep and wide sea of religious thought, but sparkling and right and gratefully refreshing."—Literary World

\$777 a Month and expenses guaranteed to Agents Outfit free. SHAW & CO., AUGUSTA, MAINE.

ROBERT MILLER, Publisher, Book-Binder, Manufacturing and WHOLESALE STATIONER.

IMPORTER OF

Wall Papers, Window Shades and SCHOOL BOOKS,

397, NOTRE DAME STREET, MONTREAL.

50 Perfume, Snowflake, Chromo, Motto Cards, names in gold & jet, 10c. G. A. SPRING, E. Wallingford, Ct.

25 Fashionable Visiting Cards—no two alike, with name, 10c. Nassau Card Co., Nassau, N. Y.

CARDS—10 Lily of the Valley, 10 Soroll, 10 Engraved 10 Transparent, 1 Model Love Letter, 1 Card Case name on all, post-paid, 15c. 4 packs 50c.

WARD & CO., NORTHFORD, CONN.



DEPARTMENT OF MILITIA AND DEFENCE.

Great Coats.

TENDERS WILL BE RECEIVED BY THE ABOVE Department until noon, on the 6th DAY of OCTOBER, 1879, for the manufacture in Canada and delivery into the stores at Ottawa, of 5,000 GREY GREAT COATS, according to sealed pattern, which may be seen on application to the Director of the Stores.

One-third of the Coats will be required on the 1st FEBRUARY, one-third on the 1st MARCH, and one-third on the 1st APRIL, 1880.

Tenders are to be addressed to the Adjutant-General, marked on the upper left-hand corner "Tender for Great Coats."

The Department will not be bound to accept the lowest or any tender.

W. POWELL, Colonel, Adjutant-General of Militia.

Ottawa, Sept. 1, 1879.



Department of Militia and Defence.

NOTICE is hereby given that the above Department invites tenders for the purchase of a quantity of arms not now required for the service of the Department. Tenders to be received until noon on the 6th DAY of OCTOBER, 1879.

Quantities and description as follows, viz:

- 2,983 Peabody Rifles.
226 Starr Carbines.
176 Colt's Revolver Pistols.
34 Allan's Pistols.
76 Artillery Carbines, O. P.
219 Cavalry do. do.
107 Spencer do. do.
5 do Muskets.
1,840 Long Enfield Rifles, M. L.
187 Short do. do.

Any information required in regard to the above can be obtained on application to the undersigned,

THOS. WILY, Lieut.-Col., Director of Stores.

Ottawa, Sept. 1st 1879.

TO LET.

In those central premises forming the corner of Bleury and Craig Streets, and in the adjacent house on Craig Street—

OFFICES, double and single. FLATS, admirably adapted for light manufacturing business, with or without steam power. Rent moderate.

Apply to G. B. BURLAND, No. 7 Bleury Street

GRAY'S SPECIFIC MEDICINE.

TRADE MARK. The Great English Remedy, will promptly and radically cure any and every case of Nervous Debility and Weakness, result of Indiscretion, excess or overwork of the brain and nervous system; is perfectly harmless, acts like magic, and has been extensively used for over thirty years with great success.



Before Taking. Full particulars in our pamphlet, which we desire to send free by mail to every one. The Specific Medicine is sold by all druggists at \$1 per package, or six packages for \$5, or will be sent free on receipt of the money by addressing

THE GRAY MEDICINE CO.,

TORONTO, ONT.

Sold in Montreal by all Wholesale and Retail Druggists, and every where in Canada and United States.

CHEAPEST AND BEST.



JOHN DOUGALL & SON,

218 and 220, St. James Street, Montreal

Electrotyping and Job Printing, Chromatic and plain.