

CHURCH DAY SCHOOL
Major Street, Toronto
MISSERS S. JOHN THE DIVINE
KINDERGARTEN and
ELEMENTARY DEPARTMENT

Bishop Bethune
College, Oshawa, Ontario
UNDER THE CHARGE OF
The Sisters of St. John the Divine
Visitor, the Lord Bishop of Toronto.
Preparation for the University.
For terms and particulars apply to the
SISTER IN CHARGE, or to
The Sisters of St. John the Divine
MAJOR STREET, TORONTO

Trinity College School
PORT HOPE, Ont.
FOUNDED 1865.
Provides a complete education for boys by the harmonious development of their mental, moral and physical powers. A splendid and healthful location, overlooking Lake Ontario, one mile from the Town of Port Hope. For calendar and full information apply to
Rev. OSWALD RIGBY, M.A., Head Master.

Telegraph Operator
has pleasant work, gets good wages and rises to the highest positions. We teach it thoroughly and quickly, also railroad rules, signals, etc., and start our Graduates in telegraph service. Our school is recommended by telegraph operators and railroad officials. Write for terms and prospectus.

ANADIAN SCHOOL OF TELEGRAPHY
Cor. Queen and Yonge Streets, Toronto.

NEW TERM OPENED
January 4th, at the

BRITISH AMERICAN
Business College

Y.M.C.A. BLDG. TORONTO
Thousands of students attend our classes, day and evening, and are placed by us in good positions. All subjects carefully taught by expert teachers. Particulars free.

W. BROOKS, Principal.

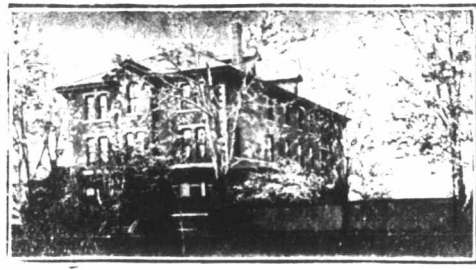
ST. ALBAN'S CATHEDRAL SCHOOL
Toronto—Incorporated
For BOARDSERS and DAY Boys.
Chairman—His Lordship the Bishop.
A thoroughly qualified staff. For prospectus address
M. E. MATTHEWS, Principal.

CHURCH BRASS WORK
Eagle and Rail Lecterns, Altar Vases, Ewers, Candelsticks, Altar Desks, Crosses, Vesper Lights, Altar Rails, Etc. Chandelier and Gas Fixtures.
CHADWICK BROTHERS
(Successors to J. A. Chadwick).
MANUFACTURERS
82 to 100 King William St. HAMILTON, Ont.

COWAN'S **Healthful and Nutritious**
Hygienic Cocoa...
Sold in 1 lb., 1/2 lb. and 1 lb. Tins only.
Absolutely Pure.

FAVORABLY KNOWN SINCE 1826. **BELLS**
HAVE FURNISHED 35,000 BELLS.
CHURCH, SCHOOL & OTHER.
MENEELY & CO. PUREST, BEST,
WEST-TROY, N.Y. **BELL-METAL**
CHIMES, ETC. CATALOGUE & PRICES FREE.

Church Brass Work
MEMORIAL BRASSES
RAILS, VASES.
PRITCHARD ANDREWS
CO. OF OTTAWA, LIMITED
133 Spadina St. OTTAWA



"Glen Astar"
RESIDENTIAL AND DAY SCHOOL
FOR GIRLS
651 Spadina Avenue, Toronto.
Thorough English Course, Individual Attention. Pupils prepared for the Universities and for Examinations in Music and Art. Large staff of Resident and Visiting Teachers.
MISS VEALS,
LADY PRINCIPAL.

WESTBOURNE School for Girls
340 Bloor Street W., TORONTO, Can.
Re-opens September 10th, 1903.

A Residential and Day School, well appointed, well managed and convenient. Specialists in each department. Affiliated with the Toronto Conservatory of Music. Dr. Edward Fisher, Musical Director; F. McGillivray Knowles, R.C.A., Art Director. For announcement and information, address the principals.
MISS M. CURELLETT, B.A.
MISS F. E. DALLAS, Mus. Bach.

ST. MONICA'S
Residential and Day
School for Girls.
170 Bloor St. W., - - Toronto
Re-opens Thursday, Sept. 10th.

Thorough course in English, Languages, Music, Art, Elocution and Domestic Science, and Physical Culture. Prepares for University and Departmental Examinations.
Kindergarten and Primary Departments.
Teachers, Specialists in each Department.
A Home School. Extensive Grounds.
For Prospectus apply to
MISS PHILLPOTTS,
LADY PRINCIPAL.

Edgehill, Church School for Girls
WINDSOR, NOVA SCOTIA
INCORPORATED 1891.

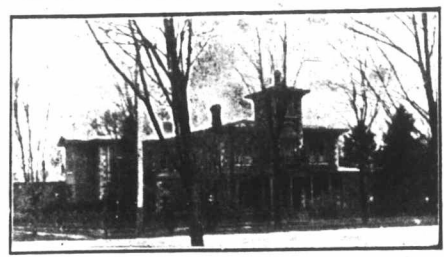
The Bishop of Nova Scotia, Chairman Board of Trustees. The Bishop of Fredericton, member of Board of Trustees, ex-officio.
Miss Lefroy, of Cheltenham Ladies' College, England, Principal, assisted by Eleven Resident Experienced Governesses from England, (five of whom are specialists in the Music and Art Departments), and one non-resident Instructor, Housekeeper, Matron and Nurse.
Extensive buildings, with capacity for 100 Residents. Heated by Hot Water, Lighted by Electricity. Grounds covering eight acres, with Lawns for Tennis, Croquet, Basket Ball, Hockey, &c. School Dairy and Laundry.
Preparation for the Universities.
TERM begins on Wednesday, January 13th, 1904.
For Calendar apply to **DR. HIND.**

Church - Extension Association
106 Beverley Street, Toronto
School of the Sisters of the Church.
Surplices made to order from \$3.00 up.
Orders taken for all kinds of Church Needlework.
Also Books and Publications.
Apply Sister in Charge

LUXFER ELECTRO-GLAZED
Church Window Decorative Glass.
WRITE FOR PRICES.
Luxfer Prism Company, Limited,
100 King Street West, Toronto.

HARRINGTON'S TUBULAR
Chime Bells
Lighter in Weight,
Sweeter in Tone,
Cheaper in Price
Than the ordinary bell
COVENTRY, ENG.
CASTLE & SON
20 University St.,
Montreal Agents

In answering any advertisement it is desirable you should mention The Canadian Churchman.



ST. AGNES' SCHOOL.
A Church School for Girls,
ELMPOOL, BELLEVILLE.
Patron—The Lord Bishop of Ontario.
Prepares for Matriculation. Conservatory of Music Examinations held at the School. Courses in Art, Physical Culture, Domestic Science. Beautiful building with all modern improvements—extensive grounds. TERMS MODERATE. For prospectus apply to
MISS F. E. CARROLL.

HIGHER EDUCATION FOR GIRLS

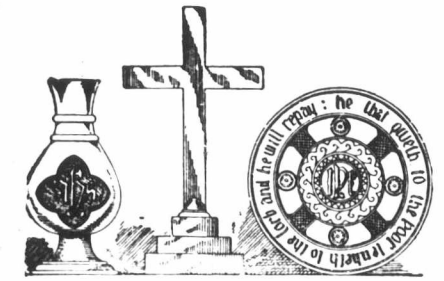
The Bishop Strachan School
(Thirty-seventh Year)
For Calendar apply to Miss ACRES, Lady Principal, Wykeham Hall, Toronto.

The Parkdale Church School
FOR GIRLS—151 DUNN AVE.
KINDERGARTEN—FOR BOYS and GIRLS
For Calendar apply to
Miss MIDDLETON, Lady Principal.

MEMORIAL WINDOWS.

Our productions are extensively adopted.

Robert McCausland, Limited
86 Wellington St. West, TORONTO



Brasses designed and manufactured for Churches. Send for illustrated catalogue (free).
THE KEITH & FITZSIMONS Co., Limited,
111 King Street West, Toronto.

STAINED GLASS
MEMORIAL :::: WINDOWS
BRASSES AND DECORATIONS
Castle & Son
20 UNIVERSITY ST., MONTREAL

MEMORIALS AND DOMESTIC ART GLASS
DOMINION STAINED GLASS
ESTD. 1881
54 RICHMOND ST. E., TORONTO.
+Riskey & Booth Props.

JONES AND WILLIS

Church Furniture Manufacturers
Metal, Wood, Stone and Textile Fabrics.
STAINED GLASS ARTIST
43 Great Russell Street, LONDON, ENG.
Opposite British Museum.
Also at Birmingham and Liverpool



THE CANADIAN NORTH-WEST

HOMESTEAD REGULATIONS.

Any even numbered section of Dominion Lands in Manitoba or the North-West Territories, excepting 8 and 26, which has not been homesteaded, or reserved to provide wood lots for settlers, or for other purposes, may be homesteaded upon by any person who is the sole head of a family, or any male over 18 years of age, to the extent of one quarter section, of 160 acres, more or less.

ENTRY.

Entry may be made personally at the local land office for the district in which the land to be taken is situated, or if the homesteader desires, he may, on application to the Minister of the Interior, Ottawa, the Commissioner of Immigration, Winnipeg, or the local agent for the district in which the land is situated, receive authority for some one to make entry for him. A fee of \$10.00 is charged for a homestead entry.

HOMESTEAD DUTIES.

A settler who has been granted an entry for a homestead is required by the provisions of the Dominion Lands Act and the amendments thereto to perform the conditions connected therewith, under one of the following plans—

(1) At least six months' residence upon and cultivation of the land in each year during the term of three years.

(2) If the father (or mother, if the father is deceased) of any person who is eligible to make a homestead entry under the provisions of this Act, resides upon a farm in the vicinity of the land entered for by such person as a homestead, the requirements of this Act as to residence prior to obtaining patent may be satisfied by such person residing with the father or mother.

(3) If a settler has obtained a patent for his homestead, or a certificate for the issue of such patent, countersigned in the manner prescribed by this Act and has obtained entry for a second homestead, the requirements of this Act as to residence prior to obtaining patent may be satisfied by residence upon the first homestead, if the second homestead is in the vicinity of the first homestead.

(4) If the settler has his permanent residence upon farming land owned by him in the vicinity of his homestead, the requirements of this Act as to residence may be satisfied by residence upon the said land.

The term "vicinity" used above is meant to indicate the same township or an adjoining or cornering township.

A settler who avails himself of the provisions of Clauses (2), (3) or (4) must cultivate 30 acres of his homestead, or substitute 20 head of stock, with buildings for their accommodation, and have besides 30 acres substantially fenced.

Every homesteader who fails to comply with the requirements of the homestead law is liable to have his entry cancelled, and the land may be again thrown open for entry.

APPLICATION FOR PATENT.

Should be made at the end of the three years, before the Local Agent, Sub-Agent, or the Homestead Inspector. Before making application for patent, the settler must give six months' notice in writing to the Commissioner of Dominion Lands, at Ottawa, of his intention to do so.

INFORMATION.

Newly arrived immigrants will receive at the Immigration Office in Winnipeg or at any Dominion Lands Office in Manitoba or the North-West Territories, information as to the lands that are open for entry, and from the officers in charge, free of expense, advice and assistance in securing land to suit them. Full information respecting the land, timber, coal and mineral laws, as well as respecting Dominion Lands in the Railway Belt in British Columbia, may be obtained upon application to the Secretary of the Department of the Interior, Ottawa, the Commissioner of Immigration, Winnipeg, Manitoba, or to any of the Dominion Land Agents in Manitoba or the North-West Territories.

JAMES A. SMART,
Deputy Minister of the Interior

N.B.—In addition to Free Grant Lands to which the regulations above stated refer, thousands of acres of most desirable lands are available for lease or purchase from railroad and other corporations and private firms in Western Canada.

J. YOUNG
THE LEADING Undertaker and
359 YONGE ST. Embalmer
Telephone 679

Vol. JAN BERI 3 CURATI \$600. Ac WANTE Halifax. Canon Cr The An Editi Public WI year copie M of 5 Chu of r Chu Y CH IN PI T tra of of des val Ch list giv 77 "C Th sel It lb. A.C St. Direc Wine Genu J. C