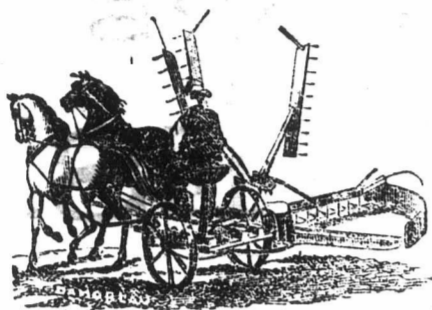


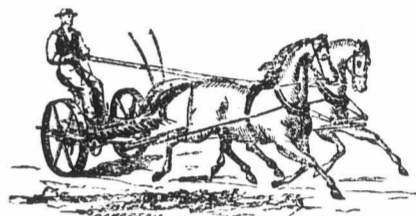
# THE JOSEPH HALL MACHINE WORKS

OSHAWA, - - - ONTARIO,

ESTABLISHED 1851.



The Joseph Hall Manufacturing Company  
PROPRIETORS.



WE DESIRE TO CALL ATTENTION TO OUR  
**Number One and Two Buckeye Combined  
REAPER AND MOWER,**  
WITH JOHNSON'S SELF RAKE IMPROVED FOR 1871.

We believe this Machine, as we now build it, to be the most perfect Reaper and Mower ever yet offered to the public of Canada.

Among its many advantages we call attention to the following:—

**It has no Gears on the Driving Wheels,**

Enabling it to pass over marshy or sandy ground without clogging up the gearing, thereby rendering it less liable to breakage. It is furnished with

**Four Knives, Two for Mowing and Two for Reaping, one of which has a sickle edge for cutting ripe, clean grain, the other a smooth edge for cutting grain in which there is grass or seed clover.**

It has malleable guards both on the Mower Bar and Reaper Table, with best cast steel Ledger Plates. It is also furnished with our

**New Patent Tilting Table for Picking up Lodged Grain.**

This is the only really valuable Tilting Table offered on any combined Reaper and Mower.—  
**The Table can be very easily raised or lowered by the Driver in his Seat without stopping his Team.**

This is one of the most important improvements effected in any Machine during the past two years.

**Any one or all of the Arms of the Reel**

Can be made to act as Rakes at the option of the Driver, by a Lever readily operated by his foot. The Cutting apparatus is in front of the Machine, and therefore whether Reaping or Mowing, the entire work of the Machine is under the eye of the Driver while guiding his team. This Table is so constructed as to

**Gather the Grain into a Bundle before it leaves the Table, and deposit it in a more compact form than any other Reel Rake.**

The Table is attached to the Machine both in front and rear of the Driving Wheel, which enables it to pass over rough ground with much greater ease and less injury to the Table. The Grain Wheel Axis is on a line with the axle of the Drive Wheel, which enables it to turn the corners readily.

**The Rakes are driven by Gearing instead of Chains, and therefore have a steady uniform motion,**

Making them much less liable to breakage on uneven ground, and more regular in removing the grain. The Gearing is very simple, strong and durable. The Boxes are all lined with

**BABBIT METAL.**

**The parts are all numbered, so that the Repairs can be ordered by telegraph or otherwise, by simply giving the number of the part wanted.**

There is no side Draught in either reaping or mowing, and the Machine is so perfectly balanced that there is no pressure on the horses' necks either when reaping or mowing. All our malleable castings, where they are subject to much strain, have been

**Twice annealed, thereby rendering them both tough and strong.**

**OUR JOHNSON RAKE**

Is so constructed as to raise the cam so far above the Grain Table that the Grain does not interfere with the machinery of the Rakes or Reels.

We make the above Machine in two sizes:

**No. One, large size, for Farmers who have a large amount to reap.**

**No. Two medium size, for Farmers having more use for a Mower than for a Reaper.**

With the exception of difference in size, these Machines are similar in every respect. Our No. 2 Machine supplies a want heretofore unfilled, viz.: A medium between the Jun. Mower and large combined Machine, both in size and price. We shall distribute our sample machines in March among our Agents, that intending purchasers may have an early opportunity of examining their merits.

**And we guarantee that all Machines shipped this season shall be equal in quality and finish to the samples exhibited by our Agents.**

We invite the public to withhold giving their orders until they have had an opportunity of inspecting our Machines, as we believe that they are unsurpassed by any other Machines ever yet offered on this continent.

We also offer among our other Machines:

**Johnson's Self-Raking Reaper, improved for 1871,** with two knives, smooth and sickle edge, and malleable guards.

**Wood's Patent Self-Raking Reaper.**

**Buckeye Reaper No. 1, with Johnson's Self Rake.**

**Buckeye Reaper No. 2, with Johnson's Self-Rake.**

**Ohio Combined Hand Raking Reaper and Mower.**

**Cayuga Chief, Jr., Mower.**

**Buckeye Mower No. 1.**

**Buckeye Mower No. 2.**

**Ball's Ohio Mower, No. 1.**

**Ohio, Jr., Mower.**

**Taylor's Sulky Horse Rake.**

**Farmer's Favorite Grain Drill.**

**Champion Hay Tedder.**

AND OUR CELEBRATED

## HALL THRESHER AND SEPARATOR

Greatly improved for 1871, with either Pitt's, Pelton, Planet, Woodbury, or Hall's 8 or 10 Horse Power. We shall also offer for the Fall trade a

## NEW CLOVER THRESHER AND HULLER,

Very much superior to any other heretofore introduced,

A new and complete Illustrated Catalogue of all our Machines is being published, and will be ready for early distribution, free to all applicants.

All our Machines are warranted to give satisfaction, and purchasers will have an opportunity of testing them both in Mowing and Reaping before they will be required to finally conclude the purchase.

For further information address—

**F. W. GLEN,**

PRESIDENT,

OSHAWA, ONTARIO.