

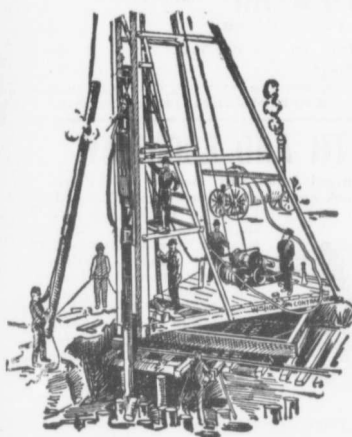
**BUSINESS NOTES.**

The full court in Winnipeg has dissolved the injunction which was granted some days ago at the instance of suit brought by contractor Edward Cass against Couture Brothers & McCutcheon, brick manufacturers, restraining them from selling brick to person or persons other than the plaintiff. The enforcement of the injunction had the effect of tying up building operations there.

The new plant of the Belleville Portland Cement Co., to be erected at Poin' Ann, will consist of a kiln building 250 x 125 feet, power house 150 x 60 feet, and grinding mill for raw and clinker grinding 150 x 125 feet. There will also be erected a fuel building about 100 x 50 feet, a stone and clay storage building about 200 x 80 feet, a stock house 500 x 100 feet, to be located conveniently for shipping either by boat or railroad, and a clinker shed

225 x 50 feet, a clay shed in the clay field, a pump house, a machine shop, carpenter shop and cooper shop.

At Minneapolis last week Judge Ray granted an injunction against the Electrical Workers' Union. He holds it to be illegal for the strikers' to conspire to injure the contractors business, to interfere with such business by threats directed against customer, to notify customers that contractors are unfair, to go on the premises where contractors are employed, or to order union men to quit work.

**PILE DRIVING**

on land or water by Steam Pile Drivers or Drop Hammers.

**Portable Boilers  
Hoisting Engines  
Pumping Machinery  
TO LET**

Bridge Building, Trestle Work, Wharves,  
Dams, Diving Submarine Work and  
General Contracting.

**WM. HOOD & SON**  
10 Richmond Sq. - MONTREAL

**DEBENTURES**

Municipalities contemplating the issue of Debentures will find it to their advantage to communicate with

**G. A. STIMSON & CO.**

Investment Dealers

24 and 26 King St. W. - TORONTO

**THE DELANO-OSBORN  
ENGINEERING CO., LIMITED**

MANNING CHAMBERS, TORONTO

**CONSULTING CIVIL, MECHANICAL AND  
ELECTRICAL ENGINEERS.**

**Pittsburgh Testing Laboratory,  
LIMITED**

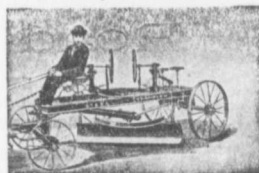
Inspecting and Metallurgical  
Engineers and Chemists

SPECIALTIES: Inspection of RAILS and all  
material for BRIDGES, BUILDINGS, and  
other structures, cast iron pipe, wood  
and steel railroad cars.

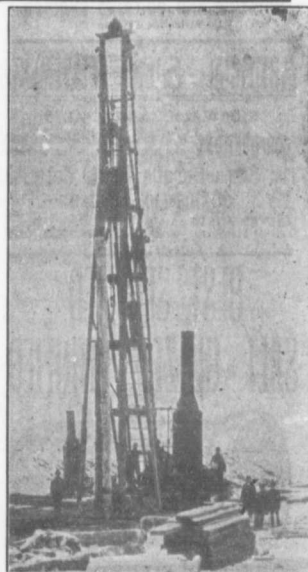
MANUFACTURE AND ERECTION.  
Expert examination and reports, chemical  
analyses and physical tests of all kinds.  
Cement Testing.

146 St. James Street, - Montreal, P.Q.

THE STEEL "CHAMPION" IS THE KING OF GRADERS  
"CHAMPION" Road Machines are now in  
use in every Province of Canada.



Address for 20th Century Catalogue  
**The Good Roads Machinery Co., Limited**  
(Late Killey-Beckett Engine Works)  
44 YORK STREET - HAMILTON, ONT.

**PILE DRIVING**

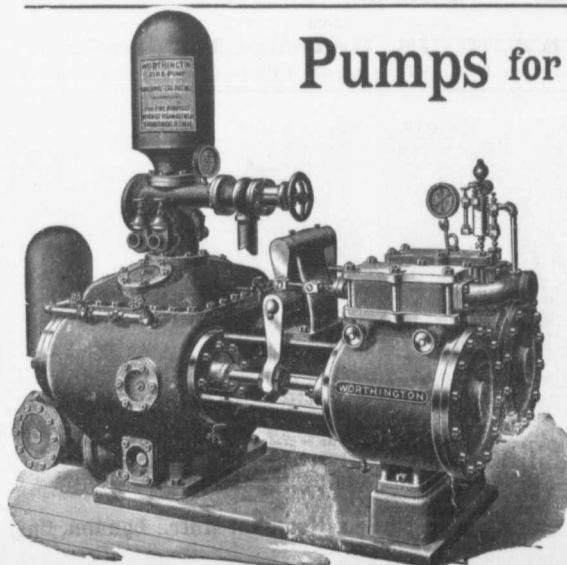
and Foundation Work.

By 5-ton Automatic Steam Pile Hammer,  
Water Jet or Drop Hammers, Dock Building,  
Submarine Work and Dredging.

**BUILDING MOVER AND WRECKER**

General Contracting.

**JNO. E. RUSSELL, - Toronto**  
908 Queen St. E. - Phone M. 2007.

**Pumps for Waterworks**

**Waterworks Systems  
Installed**

*Steam, Hydraulic, Electric,  
Gasoline, Air Lift and  
Automatic Rams.*

**Steam Boilers and  
Filters**

Write for Prices and Particulars

**The John McDougall**

CALEDONIAN IRON WORKS CO., LIMITED

MONTREAL, P.Q.