

SASKATCHEWAN IMPLEMENT MEN ORGANIZE

An organization to be known as The Northern Saskatchewan Retail Implement and Vehicle Dealers' Association, was inaugurated on May 29th, at Saskatoon, at an enthusiastic meeting of retail implement dealers. The officers elected were: President, Langton J. Williams, of the Tractor Company, Saskatoon; vice-president, William J. Tracey, of Lock & Tracey, implement dealers, Saskatoon. A board of directors was appointed to cover the whole of Northern Saskatchewan, and this trade association has started with a good membership on sound principles, for the protection and betterment of the whole implement trade.

The large amount of correspondence received from dealers who were unable to attend the meeting, stating that they wished to be members from the moment of formation, was very satisfactory. There is no doubt that this association will attain a marked success. This organization is independent of all other trade organizations. It is by the retail implement men and for the retail implement men, for the betterment of general conditions in Saskatchewan.

The facts recognized by the retail dealers of Northern Saskatchewan are: That the manufacturer is paying his labor for manufacturing goods, 75 per cent more than in the spring of 1915. The average increase in price of machinery in Canada since the spring of 1915 is 52 per cent. The average increased profits of the farmers for the same period is 125 per cent. The costs of living in the west has increased 58 per cent, and the increased remuneration for the sale of implements by retail, has not been more than 15 per cent.

The manufacturing companies are informing their stockholders in their annual statements, that the profits on the business done in the last twelve months, are very satisfactory. The increased percentage of their profits is only known to themselves, but it is recognized that the service end, both in the selling organizations themselves and in regard to the retail implement dealer himself, is not more than 15 per cent.

The whole trade situation was reviewed at this meeting. It was recognized there should be a greater degree of organization and mutual helpfulness in all lines of trade, so that Canadian business may be welded into a commercial and industrial whole, and the part of our government should be to co-operate with business men on request, to bring about results which will benefit business and therefore create national welfare.

McLAUGHLIN

LADIES WHO DRIVE

—are unanimous in their endorsement of McLaughlin Motor Cars.

The new clutch on the larger McLaughlin models is extremely easy, responding to the gentle touch of the lady's foot.

The starting pedal, accelerator and service brake are readily accessible.

The seats are comfortable and every feature regarding control has been designed for ease and safety.

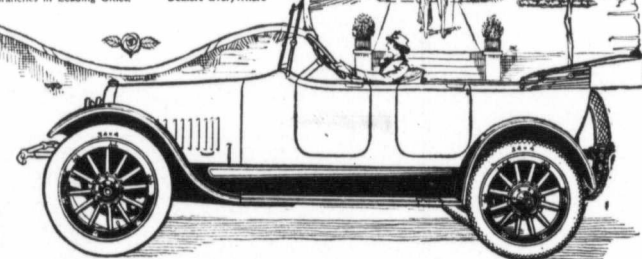
Order now as the demand will be greater than the supply.

THE McLAUGHLIN MOTOR CAR CO.,

LIMITED

OSHAWA, ONT.

Branches in Leading Cities. Dealers Everywhere



SEE THE McLAUGHLIN LINE AT THE LOCAL SHOW ROOMS

IDEAL JUNIOR—Kerosene Tractor

Fully Guaranteed. Our Guarantee is to SATISFY our customers



You're safe with the Ideal Junior or any of our tractors. We guarantee them fully: this is the first fact we wish to convey—what is more you get a handy tractor that will stand up and give continued satisfaction, one that will develop its rated horse power and more on Kerosene. The Ideal Junior is simple (not complicated in any respect) anyone can operate it.

Ideal Junior 12-24 H.P.

Two-Cylinder Tractor. Weight 6,000 lbs. Light, yet powerful, burns Kerosene perfectly, equipped with our specially designed Kerosene Carburetor; Our patented Water Valve Moisture Regulator; Our Double-opposed Cylinder; horizontal type, large, slow motor, high-tension trip magneto; Internal Road Gears driven from both sides, large wheels, special channel frame, roomy fuel tank, etc., are all features built in simple lasting design. Our Tractors are far past the experimental stage. They have "made good" for over 10 years and every power user in the West can profit by knowing more about our line.

The IDEAL JUNIOR pulls three plows 2 1/4 to 2 1/2 miles an hour and ably handles a 24-inch Threshing Machine with all attachments.

We also manufacture the BEAVER 12-24 Four-Cylinder Tractor and a full line of GAS, GASOLINE and KEROSENE ENGINES, WINDMILLS, GRAIN GRINDERS, PUMPS, TANKS, STEEL SAW FRAMES, Etc. WRITE FOR CATALOGUE No. 46.

The Ideal 15-30 is a stronger tractor than the Ideal Junior. The Ideal pulls five plows; weighs 13,000 lbs.

Goold, Shapley & Muir Co. Ltd.
Brantford, Portage La Prairie, Regina, Calgary