

fronts are sharply pointed at their lower front corners, which reach below the waist. The bell sleeves are covered with two gathered lace flounces and are novel and graceful in effect. The fanciful collar is composed of four joined sections that may be shaped with square or rounding upper corners; the seams of the collar are terminated a short distance from the top and the sections flare stylishly.

A silk jacket made in this style with flounces of lace or chiffon will have a light and airy appearance appropriate to the Summer season; less expensive jackets will either match special costumes or contrast with them and be made of cloth, silk or velvet.

We have pattern No. 1336 in seven sizes for ladies from thirty to forty-two inches, bust measure. For a lady of medium size the jacket, except the flounces, needs two yards and a half of goods twenty-two inches wide; the flounces need four yards and seven-eighths of flouncing eleven inches wide. Price of pattern, 1s. or 25 cents.

LADIES' BOLERO JACKET, WITH BELL SLEEVES.

(For Illustrations see Page 651.)

No. 1338.—Velvet is combined with moiré in this stylish bolero jacket, which reaches nearly to the waist and is curved out prettily at the bottom of the back. The jacket is fitted by shoulder and under-arm seams, and the fronts meet only at the throat and round gracefully in regular bolero fashion. The stylish bell sleeves are circular in shape and their fullness is arranged in three box-plaits at the top. A knife-plaiting of *mousseline de soie* stands out prettily over the top of each sleeve and a similar plaiting is arranged underneath at the lower edge of the sleeve. A full double ruche of the *mousseline de soie* covers the standing collar and a ribbon bow is tacked at the throat. A plaiting of *mousseline de soie*

rials for jackets of this style and ribbon, lace, passementerie, ruchings of chiffon, etc., may be used for garniture. The sleeves may be of velvet in a jacket of moiré or Bengaline with spangled trimming and Chantilly lace to adorn it.

We have pattern No. 1338 in seven sizes for ladies from thirty to forty-two inches, bust measure. For a lady of medium size, the jacket requires a yard and three-eighths of velvet, with two yards and a half of moiré silk, each twenty inches wide. Price of pattern, 1s. or 25 cents.

LADIES' ETON JACKET, WITH BELL SLEEVES.

(For Illustrations see Page 652.)

No. 1339.—A pretty shade of blue broadcloth was used for making the novel Eton jacket here represented and machine-stitching provides a fashionable finish. Single bust darts and under-arm and side-back gores give a close adjustment to the jacket, and the fronts are reversed in long, tapering lapels that form wide notches with the ends of a rolling coat-collar. The circular bell sleeves are a fashionable feature of the garment and have but very little gathered fullness at the top; their shaping causes them to fall in graceful ripples.

Smooth-surfaced cloths in the fashionable shades of tan, fawn, brown, green or blue will be very desirable for this style of jacket and heavily-corded silk and moiré will also be dressy and stylish. Braiding or machine-stitching will finish it appropriately. A jacket of this kind may match or contrast with its accompanying skirt. A velvet jacket will be stylish with a silk or cloth skirt.

We have pattern No. 1339 in seven sizes for ladies from thirty to forty-two inches, bust measure. To make the jacket for a lady of medium size, calls for three yards and a half of material twenty-two inches wide. Price of pattern, 1s. or 25 cents.

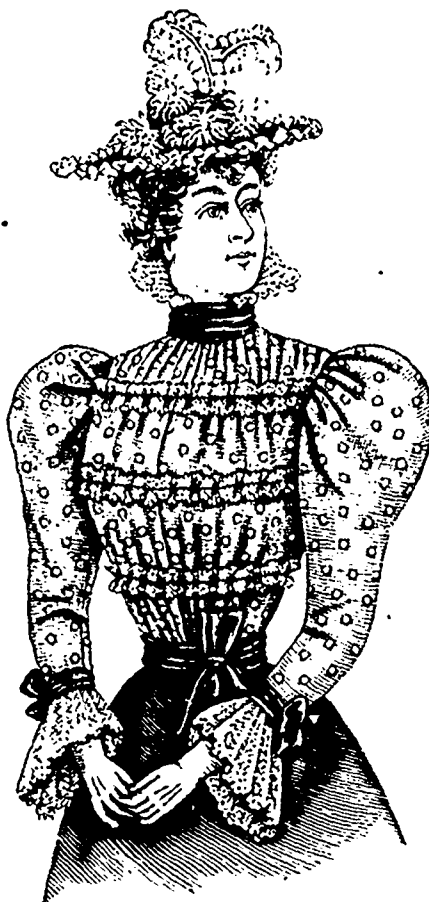
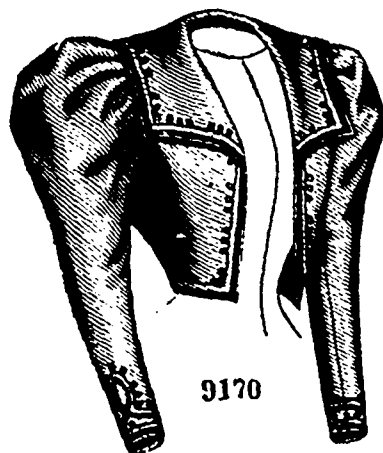


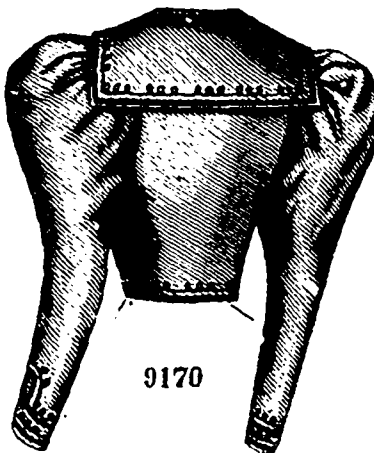
FIGURE NO. 226 W.—This illustrates LADIES' WAIST.—The pattern is No. 9142, price 1s. or 25 cents.

(For Description see Page 645.)



9170

Front View.

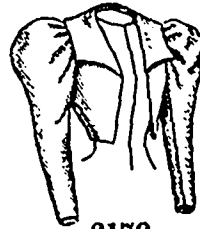


9170

Back View.

LADIES' ETON JACKET, WITH SAILOR COLLAR. (TO EXTEND TO THE WAIST OR NEARLY TO THE WAIST.)

(For Description see Page 646.)



9170

LADIES' JACKET-BASQUE, WITH TWO UNDER-ARM GORES. (DESIRABLE FOR STOUT LADIES.)

(For Illustrations see Page 647.)

No. 9151.—This jacket-basque may be seen differently made up by referring to figure No. 227 W in this magazine.

Smooth cloth, silk and lace edging are combined in this stylish basque, which is specially desirable for stout figures, being fitted with two under-arm gores at each side, side back gores, a center seam and single bust darts. Extra widths at each side-back seam below the waist are underfolded in a backward-turning plait to make the skirt roll in a box-plait at the center. The jacket fronts are turned back in silk-faced hatchet revers, revealing short vest fronts of silk that are arranged on lining-fronts fitted by double bust darts. The vest fronts are closed at the center

headed by a row of passementerie follows the edges of the jacket. Heavily-corded silk, velvet and broadcloth are suitable mate-

short vest fronts of silk that are arranged on lining-fronts fitted by double bust darts. The vest fronts are closed at the center