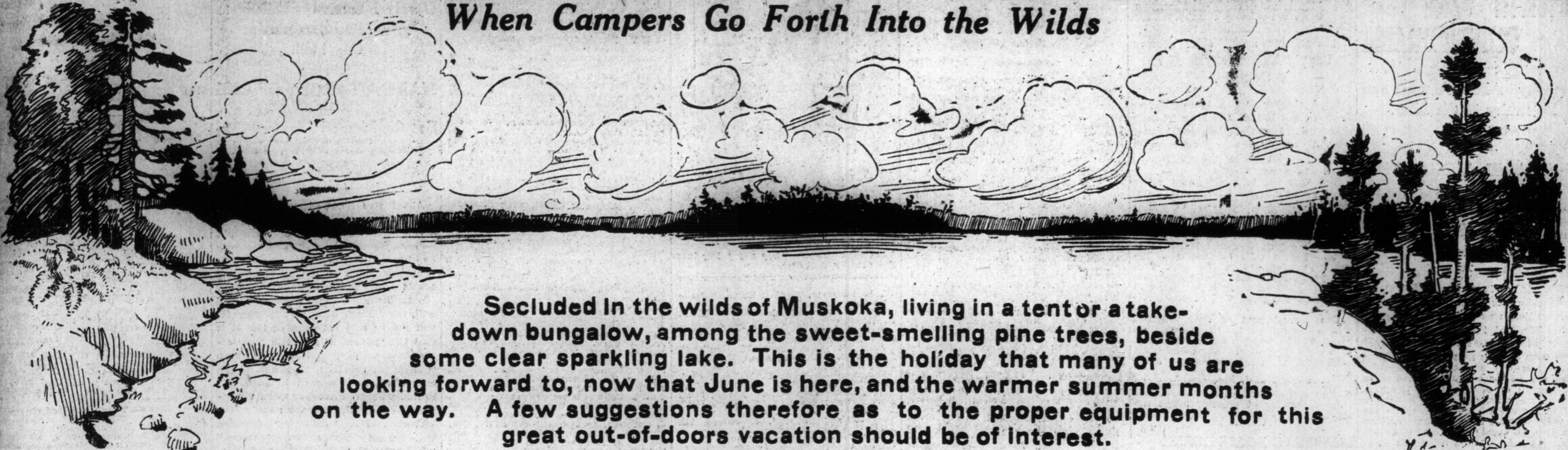


Store Your Furs in EATON'S Cold Storage Vaults. Inquire Third Floor. Charges Slight.

EATON'S DAILY STORE NEWS

STORE OPENS AT 8.30 A.M. AND CLOSES AT 5 P.M.

When Campers Go Forth Into the Wilds



Secluded in the wilds of Muskoka, living in a tent or a take-down bungalow, among the sweet-smelling pine trees, beside some clear sparkling lake. This is the holiday that many of us are looking forward to, now that June is here, and the warmer summer months on the way. A few suggestions therefore as to the proper equipment for this great out-of-doors vacation should be of interest.

A Reliable Basswood Canoe for \$28.00

FOR a canoe trip or for general purpose use this low-priced canoe; can be relied upon to give years of service with the ordinary care. See it on display, Fifth Floor.



It's a Peterborough model made of basswood. It is 16 feet long, 12 inches deep and has 34 inches beam, and weighs but 65 lbs. Obtainable in either red or green. Price with one pair of paddles 28.00

Shipped to Your Nearest Railroad Station—Freight Prepaid. Another Peterborough model, and one that is strongly put together, is made with cedar strips, fastened with copper nails. It weighs 65 lbs. and is 16 feet long, 12 inches deep, with a 31-inch beam. Price, with two paddles 45.00

A strong, well made Rowboat for family use is made of cedar, fastened together by copper nails. It is 16 feet long, 13 inches deep and has a 42-inch beam. Included are two lazy backs, foot rests, spoon oars and rudder, for 47.00

Khaki Kit Bags, \$1.00
Kit Bags, size 12" x 24", made of khaki canvas. Each 1.00
Brown Canvas Kit Bags, with handle and lock. Size 18" x 30". Each 3.25

Here Are Fishing Rods and Tackle That Stand the Strain of a Fight With the Big Fellows

For the critical moment when it's rod, line, or fish, maybe after a strenuous fight for supremacy, the strength of the following steel rods, silk or cotton lines, etc., should decide the battle in your favor.

- All-steel Fishing Rod, with cork, Strong Silk Lines, each, .35, .50, .75
- Reliable Cotton Lines, each, 1.00, 1.25, 1.50, 2.00, 2.50, 3.00
- 84-foot Trolling Lines, in bank, each 1.50
- Gut Hooks, all sizes, dozen, .20, .25, .30 and35
- Slakers, dozen, 8, 10, 15 2.00
- Floats, each, 5, 10 and 1.15
- Bamboo Poles, 2-joint, each, 1.15
- Bamboo Poles, 3-joint, each, .25

Our Special Steel Bait Rod, with three joints and handle, nickel-plated reel seat, large line guides and cork grip; in cloth partition bag. Each 2.00

5 1/2 Feet Casting Rod of steel, with larger line guides and finger guard; in cloth partition bag. Each 3.00

Exceptionally Good Value in a 9 1/2 x 12-foot Wall Tent at \$10.95



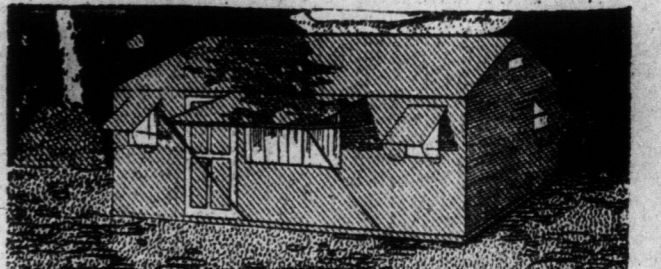
THIS low price at a time when tents are in demand most and when that material is so high in price should be an incentive to those who are planning a vacation to buy now. It's a thorough waterproof tent, made in our own factory. It's 9 1/2 feet wide, 12 feet long and 7 1/2 feet high. It is made from durable 8-oz. duck, with double-sewn seams. The parts subject to strain are reinforced, and the guy ropes are made of heavy manilla rope. Exceptionally low in price, at 10.95

All necessary poles and pegs are supplied extra, for 1.25
A fly or extra roof to fit this tent can be had for 7.80

The Holiday De Luxe in a Kenyon House

THE Kenyon Take-Down Bungalow is a positive boon to anyone wanting an inexpensive holiday abode—a portable house which may be erected here one season and somewhere else the next. Can be set up in about two hours.

Here are a few practical particulars:
The Kenyon house requires no experienced help in erecting it, a blue print with full directions being provided for the purpose.



It has a Georgia pine floor put together in sections. The frame-work is of best quality Washington fir-wood, held together with bolts and thumb-screws. The covering is a heavy army duck, specially prepared to render it waterproof. All windows and doors are screened with a fine pearl wire, keeping the bungalow free from mosquitoes and flies, the window lights are transparent, while the awnings are adjustable from inside.

Finally, the Kenyon is available in various sizes, one of the most popular being the three-room bungalow, 22 feet by 10, priced at \$210.00. The others include two roomed house, sized 15 feet by 9, at \$145.00, and another with five rooms, sized 24 feet by 12, at \$265.00.

Any of which will be delivered freight paid to your nearest railway station in Ontario and Maritime Provinces. See the Kenyon bungalow erected on the Fifth Floor.

—Fifth Floor, Queen St.

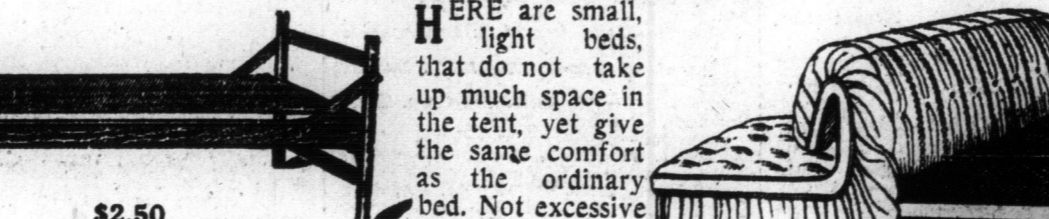
Cook With an Oil Stove

NO CHOPPING WOOD and waiting for the fire to burn up, when you have an oil stove. Just touch a match to the wick and a clean, odorless and powerful flame is made. The acme oil-cooker is compact and very economical in oil consumption. It has two strong burners that quickly do the cooking, and a mica front. Price 7.45

Three-burner size 9.95

—Basement.

Very Good Values Are Camp Cots at \$2.50 and Double Bed Couches at \$8.50



HERE are small, light beds, that do not take up much space in the tent, yet give the same comfort as the ordinary bed. Not excessive in price either.

The single camp cot, illustrated, is made of wood with folding head and foot parts. The spring is of strongly woven wire. Extra good value at 2.50
Mattresses to fit this bed, \$1.45, \$1.75, \$2.20 and 2.90

The Bed Couch, illustrated, has a steel frame, woven wire top, folding felt mattress covered with green denim with buttoned top and valance all around. Can be used as a couch or when opened out, as a double bed. Exceptionally good value at 8.50

Folding Army Camp Cot, made with a steel and wood frame, 30 x 72 inches; light. Price 2.90
Camp Cot, with wood frame and folding legs and head rest. Has woven wire top, copper wire side support and valance all around. Price 1.10

—Furniture Building, Cor. James and Albert Sts.

Flash Lights

Torch or Miners' type in black fibre cases with nickel trimmings. Extra good values at 75

Pocket Flashlights, fitted with strong battery and tungsten lamp. Each, 50

Small Nickel-plated Pocket Flashlights, with strong battery and lamp. A vest-pocket size, 65c and 75

Hand Lanterns for regular size dry cell. Have an attractive metal case fitted with switch. Various styles at \$1.50 and 2.00

Nickel-plated Lanterns with special high power batteries and polished reflectors. Priced at \$3.25, \$4.50, \$5.50 and 6.25

—Basement.

A Great Little Entertainer is the Wonderphone



AT times how dull camp life would be without music of some sort, especially on rainy days. The wonderphone cannot be recommended too highly as the very thing for your camp and so light and handy is that you can use it in the motor boat or canoe; plays all 10-inch double records with surprising clearness and is most low priced at 8.75

—Fifth Floor.

New Swiss Mouth Organs

What camp is complete without a mouth organ? They are easy to learn, and provide enjoyable music wherever you are and whenever you please. The following Swiss instruments are well made and possess a strong sweet tone.

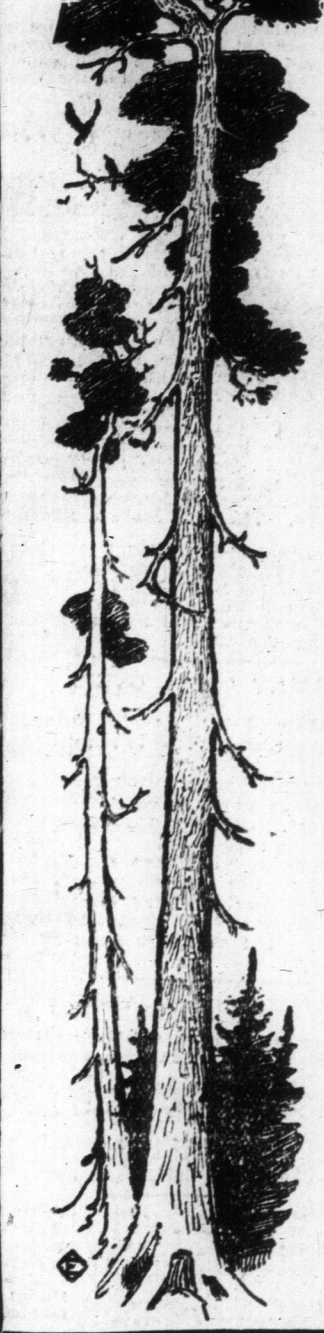
- Trumpet Call 25
- The Kangaroo 50
- Marini Band 85
- The Up-to-date 1.50

—Fifth Floor

In the Meat Department

- Ingersoll Sugar Cured Dry Salted Breakfast Bacon, put up in canvas, 10 to 14 lbs., per lb. 24
- Ingersoll Sugar Cured Smoked Hams, put up in canvas, per lb. 27
- Swift's Premium Side Bacon, put up in canvas, per lb. 25
- Swift's Premium Smoked Hams, put up in canvas, per lb. 28
- Pure Lard, our own rendering, in 5, 10 and 20-lb. tin pails (gross weight) lb. 19

—Fifth Floor



CAUSED DEATH.
12—Edward Lovely, the engineer, who swallowed the suicidal intent on the 10, died late in the night. One of the reasons for his act was that he trouble with his family.

Men's Sweater Coats

A Sweater Coat should be included in your equipment. Those of all wool in plain and fancy stitch with V-shaped necks, high storm collar and two pockets, are in plain cardinal, grey, fawn, brown, slate, royal and white, or dark grey and grey with blue. Sizes 36 to 42. Price 4.00

Work Shirts, made of khaki drill, have attached short turn-down collar, two patch pockets with flap to button. Sizes 14 to 17. Price, 1.00

Men's Two-piece Bathing Suits, made of cotton. Have quarter sleeves, low-cut neck, loose knee length and draw string at waist. Sizes 34 to 44. A suit 75

—Main Floor, Centre.

T. EATON CO LIMITED