

## Reinforced Concrete Bridges

The Lyndhurst reinforced concrete bridge, St. Thomas, Ont., shown herewith, has a clear span of 116 feet, and is said to be the longest span of its kind in

trados at the crown was 30 feet 6 inches above the footing, the arch having a rise of 18 feet, being 2 feet thick at the crown and 3 feet thick at a point 24 feet



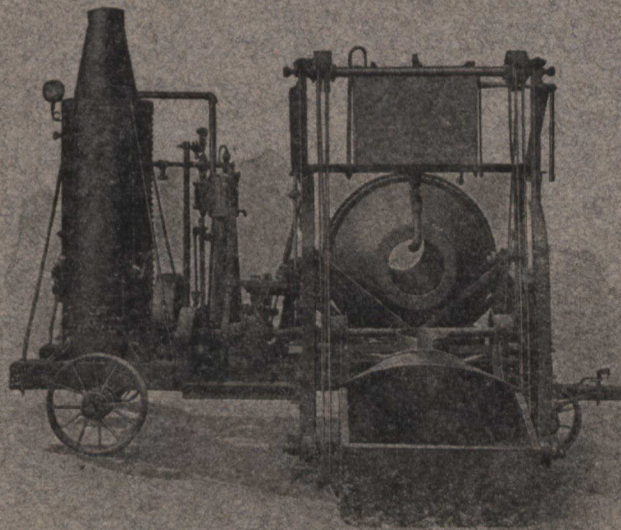
ALWAYS UP-TO-DATE

# THE SMITH SIDE LOADER

Helps to produce a still greater quantity of Concrete than before and saves time and labor

We make all sizes and styles of Mixers. We also supply

**Complete  
Rock Crushing  
Plants**  
**Hoisting Engines**  
**Concrete Block and  
Brick Machines**  
**Architectural  
Concrete Molds**  
**Concrete Wheel-  
barrows and Carts**  
**Concrete Buckets  
and Cars**



**IT....**

**DISPENSES** with  
Feeding Platform

**INCREASES**  
the Output of the  
Mixer

**REDUCES**  
the cost of Mixing

**IS PORTABLE** and  
self-contained

**HAS A CLEAN** and  
Rapid Feed

WRITE FOR CATALOGUES

## MUSSENS LIMITED

HEAD OFFICE: MONTREAL

BRANCHES: TORONTO, 73 VICTORIA ST.; COBALT, HUNTER BLOCK; WINNIPEG, 259-261 STANLEY ST.;  
VANCOUVER, 614 HASTINGS ST., W.

**ONE  
DOLLAR A  
YEAR**

Published Monthly by

**The Monetary Times Printing Co.**



62 Church St., Toronto, Ont.

Limited

**TEN  
CENTS A  
COPY**