

**THE DECASTRO
SYRUP COMPANY,**
88 KING STREET,
MONTREAL,

Offer to the trade the following brand

Capillaire.	Sugar Loaf.
Pale Amber.	Amber.
Unexcelled Honey.	Honey
Diamond Drips.	Gilt Edge.
Silver Drips.	Maple.
Extra Golden.	Golden.
Standard.	IXL Syrup in small punch'ns

**JAMES WATSON,
OFFICIAL ASSIGNEE.**

MANAGERS:
MITCHELL BROS., ACCOUNTANTS, &C.,
ADELAIDE STREET,
Opposite Victoria Street, TORONTO.

**CURRIE & THOMSON,
GENERAL GRAIN DEALERS**

And Manufacturers of

*Oat Meal, Corn Meal, Pot Barley, and
Split Peas.*

Mitchell, Ont.

**The Equitable Life Assurance
SOCIETY**

OF U.S., 120 BROADWAY, N. Y.

H. B. HYDE President.
J. W. ALEXANDER Vice-President.
R. W. GALE, Montreal. Gen. Man. Dom Can.

In order that an intelligent view may be taken of the unprecedented career and success of the Equitable Society, the public are reminded of several material and significant facts: The Equitable Society was organized in 1859, and after a brilliant career of fifteen years, takes its stand among the foremost companies in the world. The promoters of the Equitable Society adopted, as the principles of its business, the following unassailable features:

- All Premiums Payable in Cash.
- No Notes Taken, or Credits Given.
- All Losses by Death Paid in Cash.
- No Deductions from Losses on Account of Notes Taken, or Credits Given.
- All Profits Divided Among Assured.
- No Gains from Policy-holders Allowed to Stock-holders.
- Equitable Rights of Policy-holders to be regarded, Rather than Technical Points.
- The Greatest Liberality in Dealing, Consistent with Security.
- Promptness in Payment of Losses.

Strict Economy in Management of Business.

Founded upon such principles the business of the Equitable Society has been cautiously, but energetically conducted, as the following results indicate—results which have never been equaled or approached during any similar period of time, by any life insurance company in the world.

Assets of the Society, Dec. 31, 1874. \$25,981,757 44
Amount of Risks Outstanding Dec. 31, 74 181,000,000 00
Cash Annual Income, Dec. 31, 1874. 9,650,787 00
The gross am't new Assurances in 1874. 34,189,815 00
Total Surplus over Legal Reserve. \$3,662,587 28

The attention of intending assurers are called to the Tontine Savings Fund plan, now so popular and pronounced by distinguished actuaries and leading business men to possess advantages never before offered to the public.

West. Ont. Branch: 58 Church Street, Toronto.

GEO. B. HOLLAND, Gen. Agent West. Ont. Branch.
S. G. CHAMBERLAIN, Inspector.



J. Cockshutt,
PRESIDENT.

C.H. Waterous,
MECHANICAL MANAGER.

John Fiskien,
VICE PRESIDENT.

George H. Wilkes,
SECRETARY & TREASURER.

SPECIALTIES

PORTABLE SAW MILLS.
That will cut 2,000 feet of Lumber in a single hour.

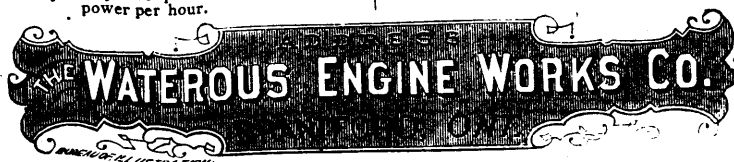
GRIST MILLS.
That will grind a 100 barrels of Flour, while using only one cord of wood.

ECONOMICAL ENGINES.
That will consume only two pounds of coal per horse power per hour.

GEARED SAW MILLS 30 H. P., Upwards

CIRCULAR SAW IRONS.
Handy, Accurate and Durable.

ROTARY PUMPS AND WATER WORKS.



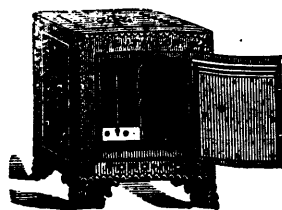
TORONTO SAFE WORKS.

Established 1855.

J. & J. TAYLOR, (Registered.)

We have had **TWENTY YEARS** experience in the manufacture of **FIRE and BURGLAR PROOF SAFES**, and upwards of 15,000 of our Safes and Vaults are now in use throughout the Dominion. Correspondents will please be careful to address

J. & J. TAYLOR, Front St. East, Toronto.
THOS. SAUNDERS. ROBT. BAIN.



ST. CATHARINES SAW WORKS.

R. H. SMITH,

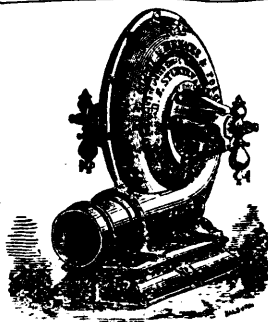
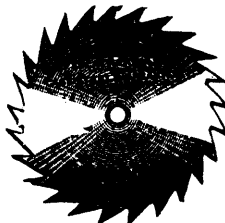
(Successor to J. Flint.)

Manufacturer of all kinds of Saws,

PATENT PLASTERING TROWELS, STRAW KNIVES, &c.,

ST. CATHARINES, ONT.

Sole Manufacturer: of the J. FLINT Patent Improved Champion, also, the Lightning Cross Cut Saws. Hand Saws in every variety, from the cheapest to the very best.



**STURTEVANT
Patent Pressure Blower,**

For Cupola Furnaces, Forges, Steamships, Iron Mills, Ventilation, Etc., and Exhaust Fans of all kinds for carrying off Shavings, Dust, Smoke, Gas, and other noxious fumes.

B. F. STURTEVANT,

Patentee and Sole Manufacturer,

72 SUDBURY STREET, BOSTON

Send for Illustrated Catalogue

Agent—RICE LEWIS & SON, Toronto.