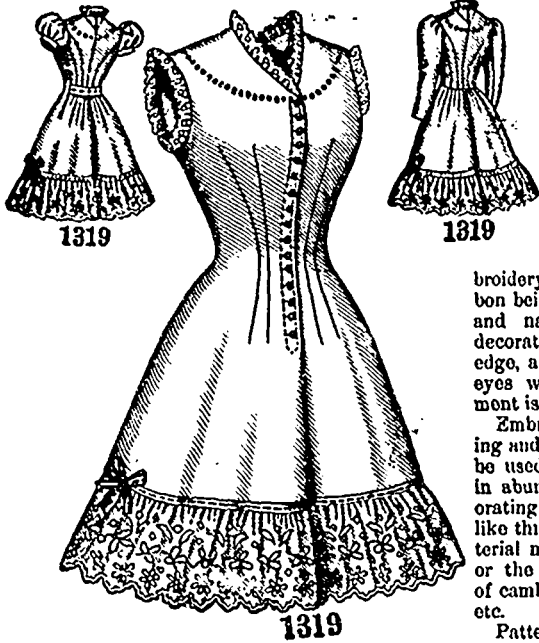


LADIES' COMBINATION CORSET-COVER OR CHEMISE AND CLOSED OR OPEN FRENCH DRAWERS. (TO BE MADE WITH A HIGH, V, OR ROUND NECK AND WITH FULL-LENGTH COAT SLEEVES OR WITH SHORT PUFF SLEEVES OR WITHOUT SLEEVES.)

No. 1319.—Cambric was used for this practical



LADIES' COMBINATION CORSET-COVER OR CHEMISE AND CLOSED OR OPEN FRENCH DRAWERS. (TO BE MADE WITH A HIGH, V OR ROUND NECK AND WITH FULL-LENGTH COAT SLEEVES OR WITH SHORT PUFF SLEEVES OR WITHOUT SLEEVES.)



1313
Back View.

1313

Front View.

NURSES' OR WAITRESS' APRON.

garment, which may be made with a high, V or round neck, and with coat-shaped sleeves gather-

ed slightly at the top, or with short puff sleeves gathered at the top and bottom and finished with bands, or without sleeves, the different effects being shown in the illustrations. The fronts are fitted by long double bust darts and are extended to form the drawers. The closing is made with buttons and button-holes at the front. Inside log-seams shape the drawers, and under-arm and side-back gores and a center seam complete the close adjustment of the body. The drawers may be made open or closed, as preferred. The upper edge of the drawers at the back is gathered and, if the drawers are to be open, it is joined to the lower edge of the body, or, if the drawers are to be closed, it is finished with a band that is buttoned to the body and the drawers are slashed in line with the under-arm seams. The drawers are trimmed with a frill of deep embroidery headed by ribbon-run beading, the ribbon being tied in a bow at the outside of the leg, and narrow edging decorates the neck edge, and the arm's-eyes when the garment is sleeveless.

Embroidered edging and insertion may be used sparingly or in abundance in decorating a garment like this, and the material may be muslin or the finest grades of cambric, nainsook, etc.

Pattern No. 1319 is in 9 sizes for ladies from 30 to 46 inches, bust measure. For a lady of medium size, the garment requires 6 3/4 yards of goods 22 inches wide. Price of pattern, 30 cents.

NURSES' OR WAITRESS' APRON.

No. 1313.—A very pretty and serviceable apron for a nurse or waitress is here shown made of white lawn and trimmed with narrow beading insertion. The skirt is sufficiently wide and long to amply protect the dress. It is deeply hemmed at the bottom and gathered at the top, where it is finished with a belt, to which are joined the plaited ends of wide ties

that are prettily bowed at the back. A bib that is pointed at the top is joined to long straps, and both the straps and bib are sewed to the belt. The straps are made double and are pointed at the upper ends, which are buttoned on the shoulders over the ends of corresponding straps that are joined to the belt at the back and crossed in brace fashion.

Nainsook, lawn, cambric, cross-barred muslin, gingham and percale are used for making aprons of this kind and Hamburg or lace edging and insertion may furnish the trimming.

Pattern No. 1313 is in one size and to make an apron like it, requires 5 1/2 yards of material 22 inches wide. Price of pattern, 15 cents.

LADIES' NIGHT-GOWN, HAVING A BOLERO BODY TO WHICH THE SKIRT IS JOINED.

No. 1312.—White nainsook is combined with all-over embroidery in the pretty night-gown here illustrated. The gown is made with a bolero body, shaped by a short center seam and shoulder and under-arm seams. The skirt portion has under-arm seams and is joined to the bolero body, extending in a point to the center seam of the back and to the neck in front and being gathered where it is joined to the rounding part of the lower edge; it is laid in a box-plait at the center of the back, and the closing is made to a desirable depth with buttons and button-holes through a box-plait formed at the front edge of the right front. The plait in the right front is stitched along its folds and the fronts are stitched together below the closing. The neck is finished with a standing collar that is overlaid with a row of insertion and decorated at the top with a standing frill of lace. The bishop sleeves are gathered at the top and bottom and finished



1312

1312

1312

LADIES' NIGHT-GOWN, HAVING A BOLERO BODY TO WHICH THE SKIRT IS JOINED.

with wristbands that are covered with a row of insertion and decorated at the lower edge with a deep frill of lace. A frill of similar lace follows the joining of the skirt and body, and ribbons run under the insertion on the collar and wristbands are tied in bows at the throat and at the front of the arm.

Nainsook, Lonsdale cambric, lawn, etc., are used for night-gowns made up in this style, and if the gown be made of dimity, chamois and wash silk and trimmed with lace and ribbon, it will make an attractive lounging robe.

Pattern No. 1312 is in 8 sizes for ladies from 30 to 44 inches, bust measure. For a lady of medium size, it needs 6 3/4 yards of nainsook 36 inches wide, with 3/4 yard of all-over embroidery 27 inches wide. Price of pattern, 30 cents.