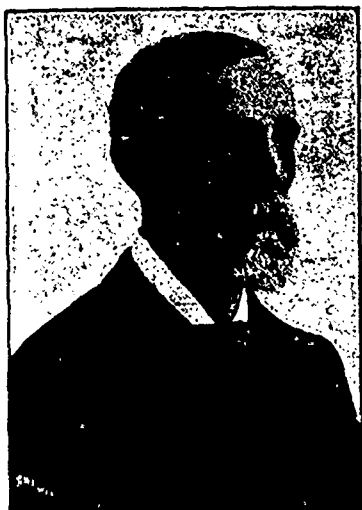


President, Harris

The election of Jos. Harris to the presidency of the Winnipeg Grain Exchange, will give general satisfaction. Mr. Harris is one of the most highly esteemed members of the exchange, and he has won this esteem by his quiet, gentlemanly manner, rather than by any ostentatious display of fancied friendly qualities.

Mr. Harris is a veteran in the grain trade. Besides being a grain merchant of long experience, he is also a thoroughly expert grain man. He occupied the important position of grain inspector at Toronto for seventeen years, during which time considerable quantities of Manitoba wheat passed through his hands. Previous to his appointment as inspector, he was

**JOS. HARRIS**

President Winnipeg Grain and Produce Exchange

for many years connected with the grain trade at Toronto. He resigned the inspectorship in order to engage in the grain trade in Winnipeg, arriving here in the fall of 1891, and immediately engaging in business here in his own name. On the formation of the Dominion Elevator Co. here in the fall of 1897 he took an interest in this concern, with which he is still connected.

December Customs Report.

The following statement shows the value of goods exported and imported during the month of December, and the amount of duty collected thereon at the Winnipeg customs port:—

	1897.	1898.
Goods exported	\$117,406	\$149,475
Goods entered for consumption, dutiable	\$180,805	\$218,404
Goods entered for consumption, free	119,857	109,018
Total	\$306,862	\$327,422
Duty collected ...	\$65,249.41	\$71,784.01

E. O'REILLY

GRAIN DEALER

GRAIN EXCHANGE WINNIPEG, MAN.

Special facilities through eastern connections for handling grain to the best advantage for the Ontario milling trade.

Correspondence by wire or mail invited.

Statistical Wheat Reports.**WHEAT IN CANADA.**

Stocks of wheat in Canada at principal points of accumulation are reported as follows:

Montreal	21,000
Toronto	142,000
Kingston	40,000
Winnipeg	865,000
Manitoba elevators	5,900,000
Fort William, Port Arthur and Keewatin	5,775,000

Total Dec. 31

BRADSTREET'S REPORT OF STOCKS.

Total stocks in the United States and Canada, east of the Rocky Mountains, as reported by Bradstreet's on Dec. 31, were 50,120,000 bushels.

Total stocks in the United States and Canada a year ago were 54,173,000 bushels, according to Bradstreet's report.

Pacific coast wheat stocks on Jan. 1 were 5,923,000 bushels, compared with 6,001,000 bushels a year ago.

THE VISIBLE SUPPLY.

The Chicago visible supply statement of stocks in the United States and Canada, east of the Rocky Mountains, for the week ended Jan. 7, was 27,358,000 bushels, being an increase of 465,000 bushels for the week. A year ago the visible supply was 35,803,000 bushels, two years ago 53,872,000 bushels, three years ago 68,945,000 bushels, and four years ago 86,015,000 bushels.

WHEAT STOCKS AT U. S. POINTS.

	Bushels.
Chicago	3,704,000
Duluth	4,020,000
Minneapolis	5,688,000
New York	4,015,000
Buffalo and afloat	4,445,000

STOCKS OF OATS AND CORN.
The visible supply of oats in the United States and Canada, east of the Rocky Mountains, is 6,402,000 bushels, compared with 14,310,000 bushels a year ago. The visible supply of corn is 20,935,000 bushels, compared with 39,513,000 bushels a year ago, according to the Chicago statement.

WORLD'S WHEAT STOCKS.

Stocks of wheat in the United States, Canada, in Europe and afloat for Europe on Jan. 1, for a series of years, were as follows, Bradstreet's report: Jan. 1, 1899, 118,949,000 bushels; Jan. 1, 1898, 122,434,000; Jan. 1, 1897, 156,659,000; Jan. 1, 1896, 194,685,000; Jan. 1, 1895, 206,509,000; Jan. 1, 1894, 212,263,000; Jan. 1, 1893, 204,362,000; Jan. 1, 1892, 170,036,000 bushels.

CROP MOVEMENT.

The following table gives the receipts of wheat at the four principal United States spring wheat markets from the beginning of the crop year, August 1, 1898, to date, compared with the same period of last year:

	This crop	Last crop
Minneapolis	51,576,750	48,351,980
Milwaukee	8,741,985	5,614,657
Duluth	55,810,433	31,787,389
Chicago	22,952,890	25,018,741

Total

	This crop	Last crop
Toledo	10,520,613	8,896,258
St. Louis	11,487,768	9,888,968
Detroit	8,472,080	3,715,834
Kansas City	19,905,518	23,127,650

Total

W. C. GRAHAM

GRAIN DEALER

Wire or write for prices before selling
P.O. Box 218

GRAIN EXCHANGE WINNIPEG, MAN.

WINNIPEG GRAIN AND PRODUCE EXCHANGE

President ROBT. MUIR

Vice-President
JOS. HARRIS

Secy.-Treas.
CHAS. N. BELL

THE SUCCESS OF THE COUNTRY GRAIN DEALER

Depends largely on the Commission Merchant on his ability, honesty and responsibility.

Don't you think it would be to your advantage to have such a firm attend to your business in this market? If so, try us.

Our facilities are unsurpassed for disposing of grain to the best advantage. We advance cash on car bills of lading at a low rate of interest and you can draw on us at any time with documents attached whether you wish to sell or not. Insurance, Fire and Marine, placed at best terms.

Enquiries re markets, shipping, etc., promptly and cheerfully answered.

Do you get our Daily Market Report? If not send for it.

THOMPSON, SONS & CO.

GRAIN COMMISSION MERCHANTS, WINNIPEG, MAN.

DUNCAN G. McBEAN & CO

BROKERAGE
and COMMISSION
MERCHANTS

Room 5, Grain

Exchange Building

WINNIPEG

MANITOBA

Grain and all kinds of country produce handled

ALEX. McFEE & Co.

GRAIN EXPORTERS

Board of Trade Bld'g

MONTREAL

Room 18, Grain Exchange

WINNIPEG

H. S. PATERSON

Grain Dealer and General
Commission Merchant

Room 19, Grain Exchange

WINNIPEG

1000 Tons BALED HAY FOR SALE

by carload; also 50 carloads Oats.

P.O. Box 570.

W. GIBBINS & CO

GRAIN BROKERS
and MERCHANTS

GRAIN EXCHANGE, WINNIPEG.

Highest prices paid and advances made on Bill of Lading and Winnipeg inspection.

PARRISH, LINDSAY & CO

GRAIN DEALERS
AND EXPORTERS

Room 24, Grain

Exchange Building

WINNIPEG

MANITOBA

WHEAT, OATS, FLOUR and BARLEY