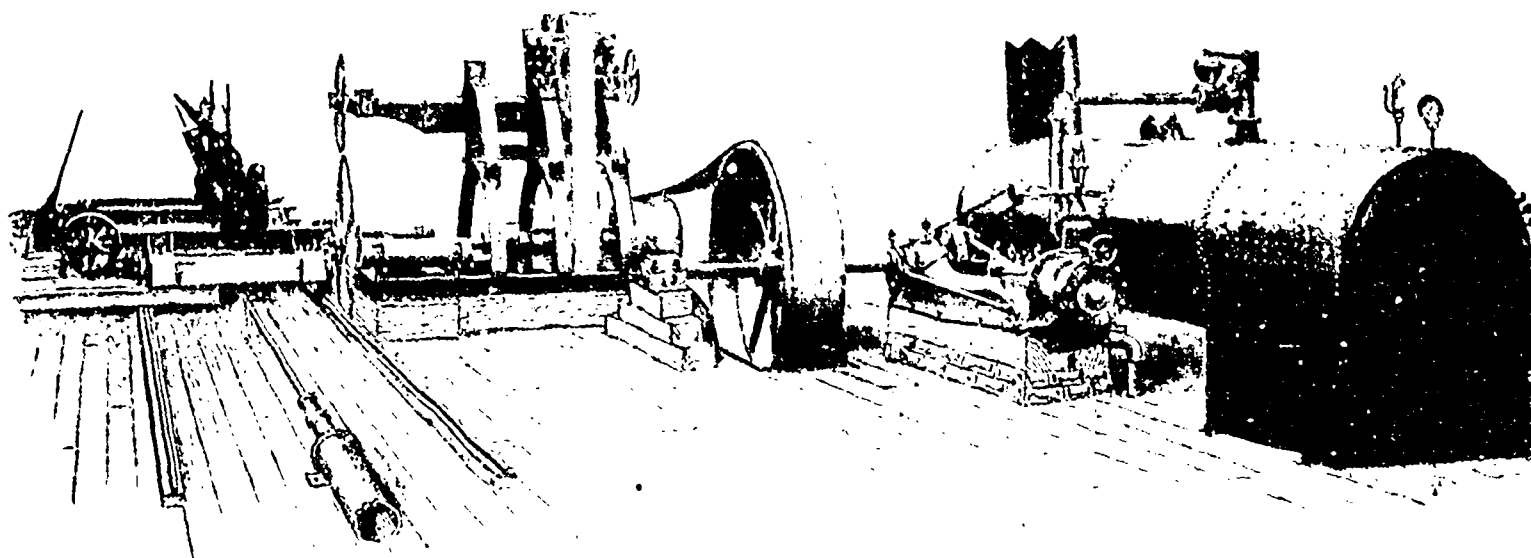


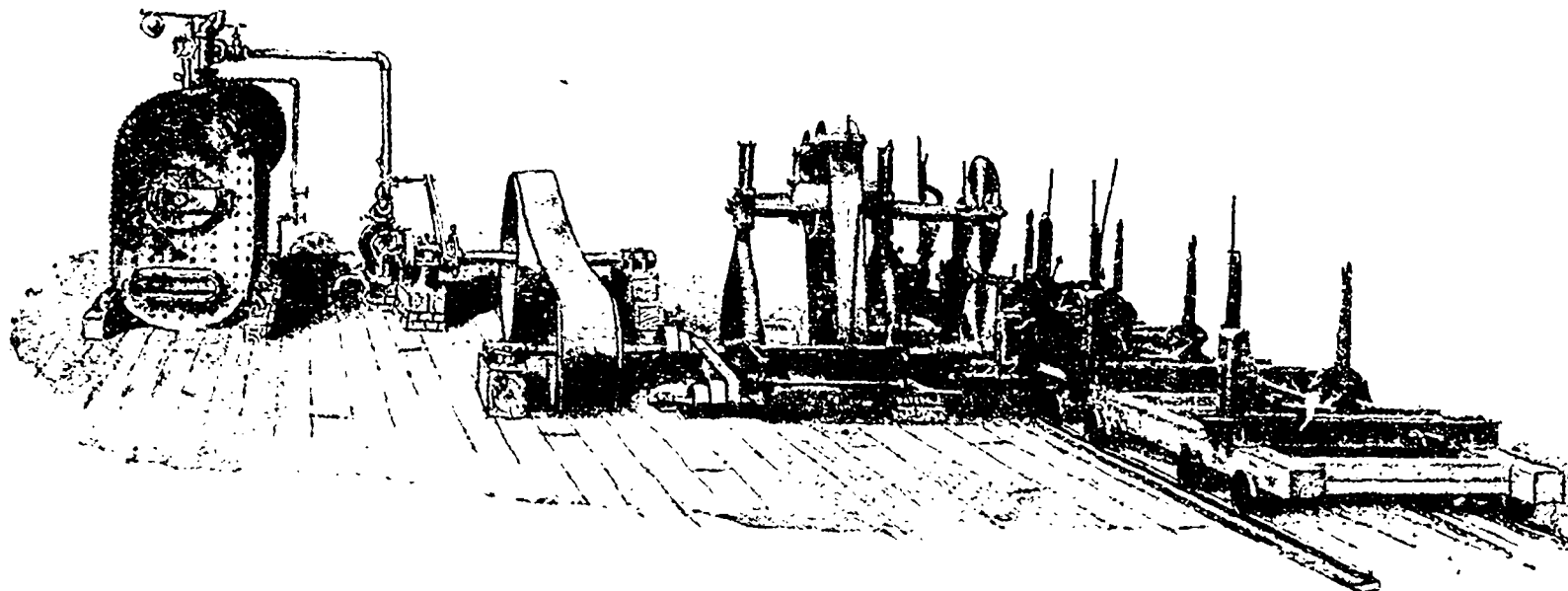
# PORTABLE SAW MILLS

in many instances are indispensable. Our Experience in building them extends over Half a Century. . . . .



## 100 H. P. "PACIFIC COAST MILL,"

With No. 4 Saw Frame, 72" Lower and 56" Upper Saw; No. 6 Girder Steel Unbreakable Carriage, opening 72 inches from Saw—all portions of Carriage either Rolled or Cast Steel, Direct-Acting Steam Feed, etc.

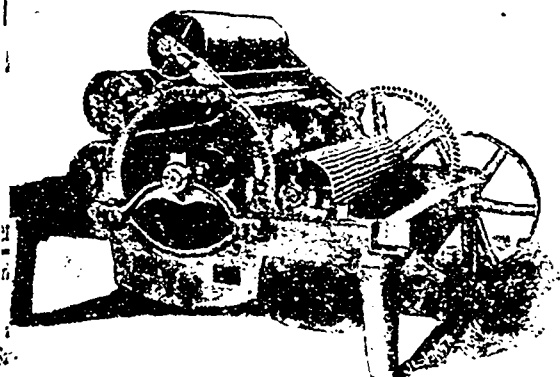


## 60 H. P. "ONTARIO AND WESTERN MILL,"

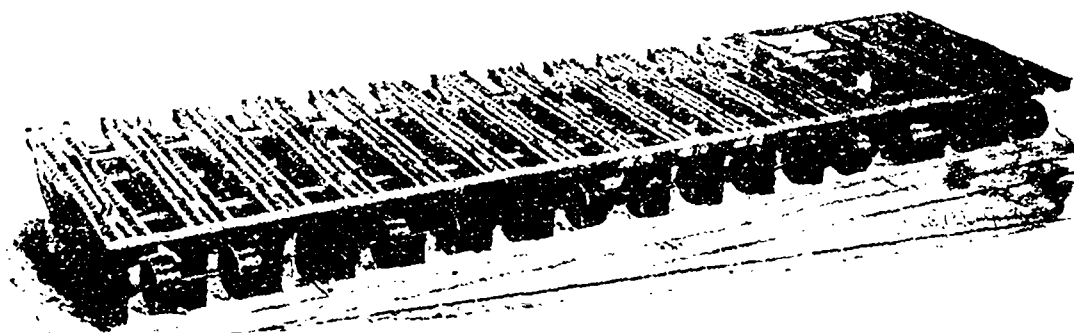
With No. 3 Saw Frame, having 12 inch face Friction Feed Works, taking 60" Lower Saw and 40 inch Upper Saw. A No. 3 1/2 5 Block Girder Steel Carriage opening 50 inches from

Saw, with Peel and Reliance Cant Hook Double Spud Dogs—Rope Feed, Automatic coupling in Carriage between 3rd and 4th blocks—extras when required Bull Wheel, Slab Saw, Single or Double Edger, Trimmer, Live Rolls, Planer and Matcher, etc.

THE above are our Large Portable Saw Mills. We Manufacture all sizes down to 12 H.P., with Saw Irons of Smallest and Lightest Dimensions for Mule Back or Dog Train Transportation to the Mines. One of our 12 H.P. mills is operated by the Hudson Bay Co., at Fort Churchill, H. B., and many are scattered throughout the Dominion. We ship this month one of the smallest to "Omenica Consolidated Hydraulic Mining Co." for transportation 600 miles north from Ashcroft, B. C. Write or Wire us for Prices and Delivery Date.



A THOROUGHLY GOOD RELIABLE 3 SAW EDGER AT A LOW PRICE



A 14 SAW AUTOMATIC TRIMMER, TRIMS 10 TO 30 FT. LONG, ALL SAWS UNDER INSTANT CONTROL OF OPERATOR.

EVERYTHING FOR Saw Mills, Wood Working Establishments and Pulp Mills.

# WATEROUS, BRANTFORD, CANADA