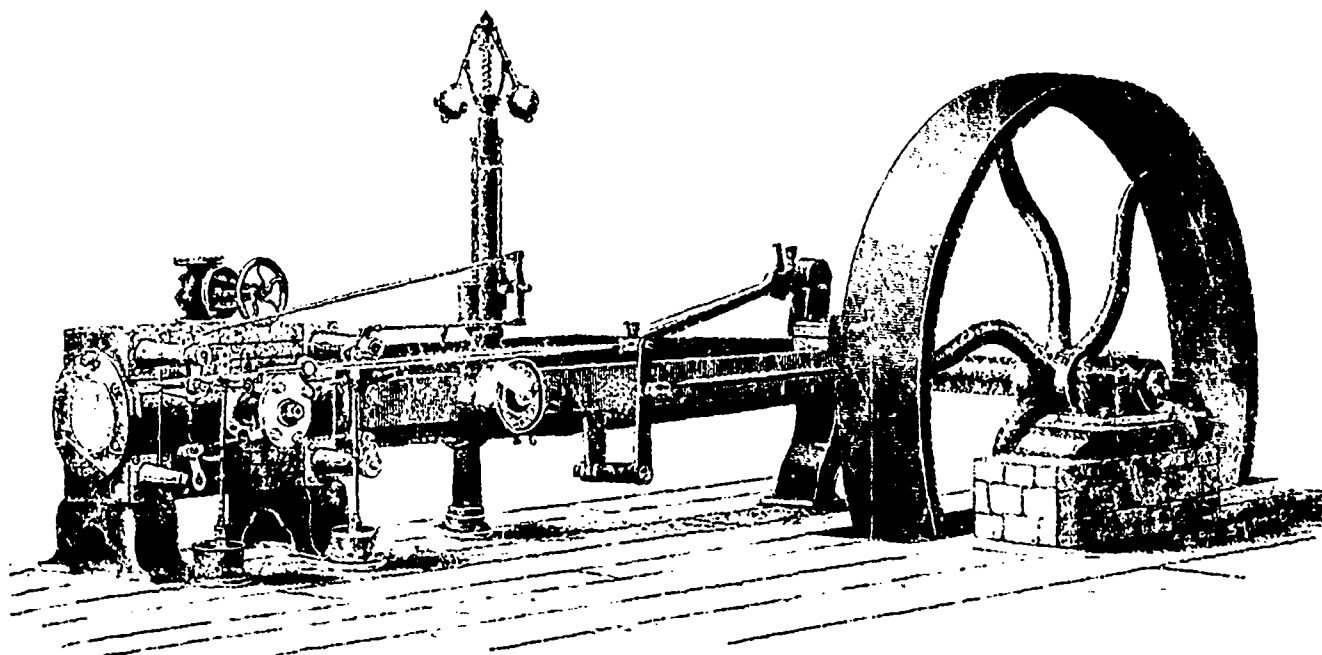


THE GALT FOUNDRY,

Engine and Machine Works.



THE HARRIS-CORLISS STEAM ENGINE

Is the most perfect Cut-off Engine made. For Economy of Fuel, Regulating of Speed, Accessibility of all its Parts, it has many Imitators, but no Equals, and is Unsurpassed.

While many Engines of the same class have been invented, built, tried and abandoned, the Harris-Corliss has steadily gained in public favor, and is now

Without a Successful Rival.

PLEASE NOTICE SOME OF THE ADVANTAGES OF THE HARRIS-CORLISS ENGINE:

- 1st. The Steam is admitted at Boiler pressure to the piston by the main valve and is cut off at the same point, the lead determining through the regulator. When the supply of steam shall be cut off. This is the only Engine that thus admits steam at full boiler pressure.
 - 2d. The success of the Harris-Corliss Engine is due to the simplicity and perfect action of the governing elements, the Governor is an independent mechanism with no extraneous work, and it constantly responds to all variations in the velocity of rotating parts.
 - 3d. No parts of the regulating medium enter the steam chest, except by a small port of sight of the engineer, and subject to the corrosive action of steam, and the oil used for lubricating the valves and piston.
 - 4th. Regularity of Speed under varying loads or steam pressure.
 - 5th. Recessed Valve Seats which avoid the liability of wearing shoulders on them.
 - 6th. Stop Motion on Regulator of Engine which effectually stops the Piston when necessary to be regulated by any means found to perform its work, thus preventing the Engine from running away.
 - 7th. Having four Valves either can be adjusted independently of the other with the greatest ease.
 - 8th. The increased amount of power it develops.
- We would draw your attention to our new and improved Adjustable Pillow Block, which is pronounced by all practical men who have seen it to be the best in the world.

COWAN & CO.,

Galt, Ont., Canada.

Manufacturers of Engines, Boilers and Wood-Working Machinery—all kinds, new Patterns, highly finished.