

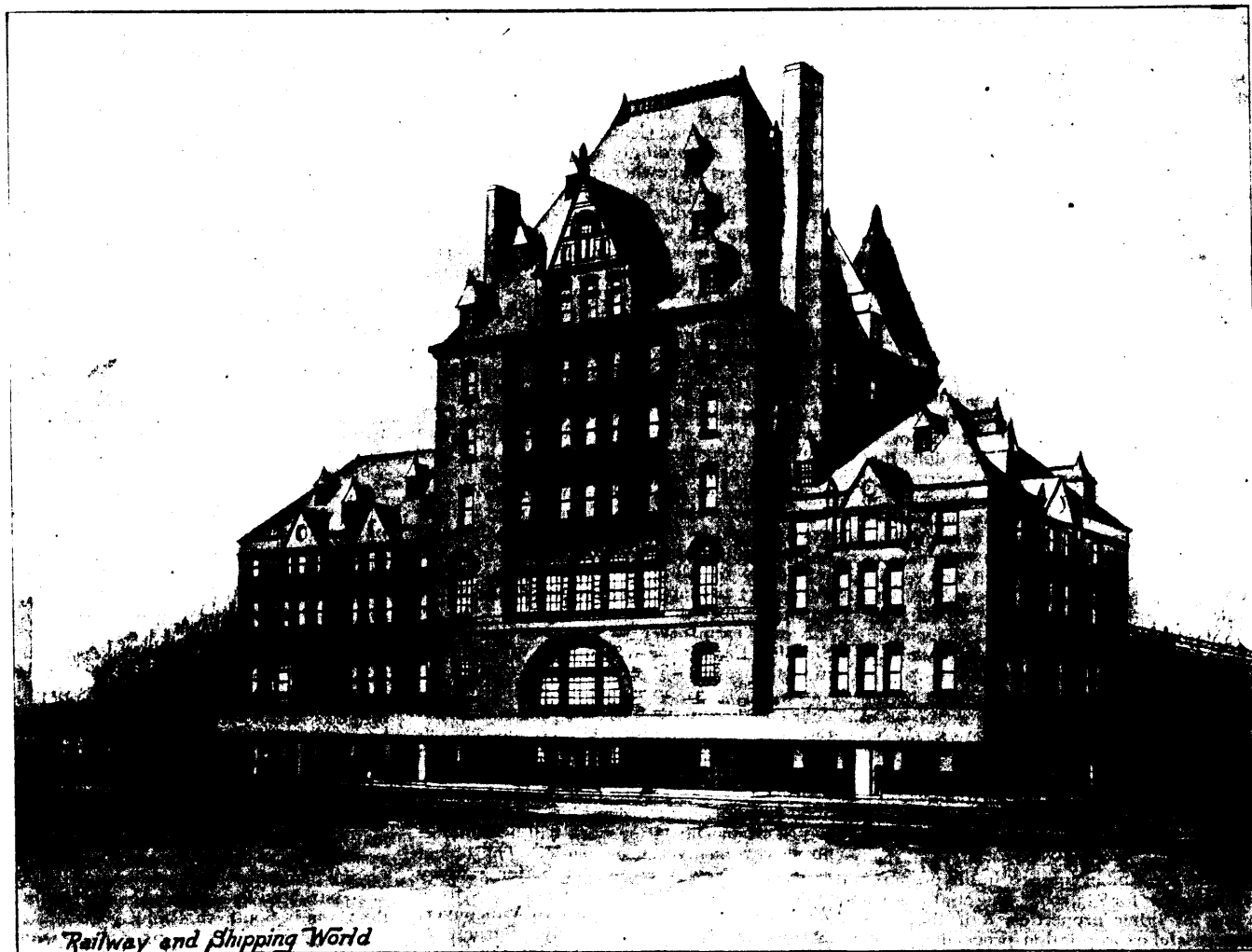
**C.P.R. Stations and Hotels.**

The illustration on this page shows the track & harbor elevation of the passenger station & office building now being erected by the C.P.R. Co. at its Pacific Coast terminal, Vancouver. The dimensions of the building are 191 ft. on Granville St. by a depth over all of 70' 5", the building being 8 stories in height above the track levels, which are some 29 ft. below the grade of Granville St. The building is in the French chateau style of architecture, in keeping with the other buildings that the Co. has recently erected in Montreal, Quebec & other places, & consists of a central pavilion 80' x 70' carried up 8 stories & covered with a steep pitched roof flanked on each side by 2 towers, while the wings on each side are carried up 4 stories in height, finished with hipped roofs.

is the general waiting-room 48'x78' in size, & 16' high, with windows opening on to Granville St., & a long series of windows overlooking the harbor. In the centre of the room is situated the ticket office, while on each side of the entrance are to be found the telegraph & parcels office, & the news stand. West of this room is the women's waiting-room, 32'x31' in size, with a secondary waiting-room & toilet rooms attached to it. A generous fire-place has been provided here, built of fire-brick & marble, with the upper panel filled by a painting. Alongside of this women's room is an opening off the general waiting-room, & from Granville St. is the express office with a large security vault in connection with it. The approach to the upper floor is also in this wing, & a lavatory for the use of the Co.'s officers. On the western side of the general waiting-room is the General Superintendent's office &

fuel & other conveniences. Between the basement & the ground floor is an entresol or intermediate story where the Steamship Department is located, 44'x24' in size, with private offices for the officers in charge. Accommodation is also provided on this floor for the Superintendent & his Assistant, & for the train despatchers, who have a large office provided with bay window overlooking the tracks in the east direction.

On the 1st floor the whole of the center pavilion is given up to the Traffic Department 58'x47' in size with 2 large private offices, The Land Commissioner is also accommodated here with a large public office and 4 private offices and a lavatory. Each of these departments has a fire-proof vault 15'x18' in size. The General Superintendent's Accountant & Car Accountant are accommodated in the eastern wing with four private offices & a lavatory in connection.



TRACK AND HARBOR ELEVATION, C. P. R. STATION AND OFFICES, VANCOUVER, B.C.

The material of construction up to the first floor level is of Calgary stone with rock face surface, with moulded cornices, arches, & other decorative members richly carved. The superstructure is a specially made brick from Victoria 5" x 10" x 2" in size, of a mottled buff color, & very hard in texture, being impervious to water, & therefore particularly suitable for a building in a climate such as is experienced in Vancouver. The roof will be covered with slates that are quarried in B.C., while the covering of the dormers & all other metal work in connection with the roof will be of copper.

One enters the ground floor at the level of Granville St. under a low-browed arch 42 ft. span, & 14 ft. high, through a covered porch 16 ft. deep by the width of this arch. Off this

private office overlooking the harbor, while across the corridor is the Treasurer's general office & private office with a large security vault attached to it, an office for the Purchasing Agent, & lavatories for the use of the public & of the Co.'s officers. The main staircase & elevator are situated at this end of the building to give access to the upper stories. One descends to the track level by 2 generous stair-cases 8 ft. wide, which end in a hall on the basement floor 19'x79' in size. An elevator is also provided to take passengers from this hall to the general waiting-room. The remainder of this basement floor is devoted to the baggage-room 45'x32' in size, express-room, a room for the conductors, for the steamship mail service, for the heating plant,

At the 2nd floor level the wings are unfinished, provision, however, being made for further extensions. The whole of the central pavilion being occupied by the engineering staff, with a general office 48'x58' in size, & extensive private offices, large storage vault 19'x15'. The 3rd floor is laid out similarly to the 2nd floor in every respect, & is devoted to the telegraph and cable staffs. The 4th & 5th floors are unassigned, and are reserved for future accommodation and extension. These four upper floors are particularly desirable for the purpose intended, ample light & ventilation being obtained from 4 sides, while the large fireproof storage vaults & lavatories on each floor provide better accommodation than is usually given.