

Select the right day, use a plate of medium speed, large opening for your lens, and take a snapshot—not too fast. When you put the plate in the developer the sun will at once appear, and as the image comes up halation will spread all over the surface of your plate. Do not let this bother you, but go on and fix it. After the negative is dry, rub the affected parts with alcohol until they are sufficiently reduced. This same treatment will also apply to windows in interior views.

By printing your sunsets very dark you can obtain good moonlights. It might just be added that a sunset over water is a thousand times prettier than the same on land.

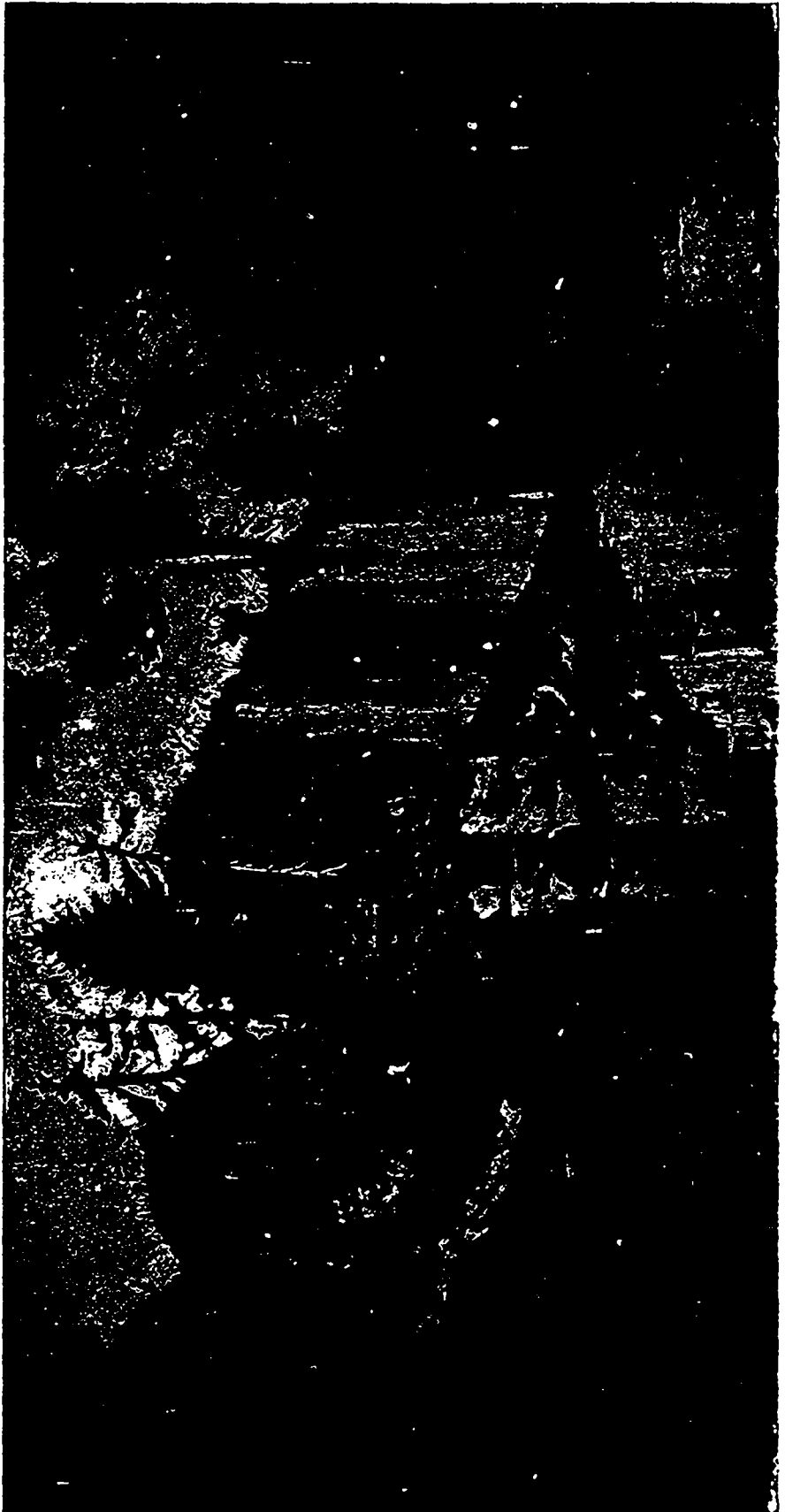
• • •

The Canadian Camera Company, formerly of Montreal, are now open at 178-180 Victoria Street, Toronto. They are the producers of the Glencoe Camera and the Chautauqua plate, as well as all other goods in the photographic line. Evidently their success is no longer a question. They have had to work overtime since before Christmas to fill orders, have shipped their first consignment of goods to China, and recently sent their representatives to the Australian colonies. Their goods are first class in every respect, and as the only Canadian manufacturers in their line they are entitled to the support of their loyal Canadian brethren.

By the way, the flash powder produced by the Canadian Camera Company is put up in the best form and is without exception the best flash powder I ever had an opportunity of using.

• • •

Quite recently I have had an opportunity of trying the Chautauqua brand of plates, manufactured by the Canadian Camera Company, and find them on a par with the best manufactured in the United States, and away above a great many makers. As a test, I took a holder and loaded one side with a Chautauqua plate and the other with the brand I have been using, and which also cost more than those of the Canadian company. Both were exposed under the same conditions, on the same subject, and on developing I found that while the Chautauqua plate did not produce quite so intense a negative, it greatly surpassed the other in brilliancy and detail; so that though from both I got very good negatives, the one produced by the Chautauqua plate was slightly better and a much quicker printer.



Steamboat Rock on Lake Wessomeau, Province of Quebec.