

## Chips.

A STEAM coopers on the Scotch system has been built at Uddevalla by Swedish capitalists, and the manufacture is superintended by Scotch coopers. The casks turned out are superior to the hand-made, and, although expensive, are likely to find a good demand.

WORKMEN have discovered a subterranean forest seven feet below the surface of the ground near the mouth of Savage river, in Chazy, Clinton county. Many of the trees are declared to be in an admirable state of preservation. One of them is a large oak over 40 feet in length.

MAKING of charcoal is a considerable industry a long the eastern division of the Flint & Pere Marquette railroad, in Michigan. Between East Saginaw and Holly there are a number of kilns. There are a few on the Otter Lake Branch, and between Wayne Junction and Monroe there about fifty kilns.

LEWIS PRAY, of Portland, Me., who turns out carriage and sleigh work, makes the statement that hickory can be raised in Maine from the seed in 15 years, to the size required for carriage stock, and believes such culture would be profitable. The elder trees are not so fine grained and valuable as the younger ones.

THE quantity of logs cut and floated down the provincial streams during the past season is estimated by a prominent New Brunswick lumberman as 345,000,000 feet. This includes the timber cut in Northern Maine, which floats into New Brunswick River. The amount cut on the Aroostook River is given at 65,000,000 and on the Upper St. John as 45,000,000 feet.

Mr. McAllister's drive of logs on Snake River has been abandoned owing to the impossibility of getting them through the enormous growth of weeds. The drive consisted of 40,000 logs and some dimension timber, and extends for eight miles along the river. It will probably remain there until next spring. Mr. McAllister had accepted several contracts for the supply of lumber, which he will now be unable to fill.

THE Indianapolis, Ind., Wooden Dish Company has perfected a machine, which takes the veneer from the mill, cuts out the blank, shapes and scores it, folds it up, makes, drives and clinches the wire staples, and throws the dishes off complete, at the rate of one a second. The company's works, burned last March, have been rebuilt, and \$12,000 worth of new machinery has been purchased. The works will start up August 15, and have a capacity of 200,000 per day.

THE *Lumberman's Gazette* says:—Opinions of great men sometimes prove no better than those of the most ordinary individuals. Twenty-four hours before the break of the great jam of nearly one hundred million feet of logs at Grand Rapids, Mayor Watson was quoted by the press as saying that for one thousand dollars he would insure the safety of the railroad bridge to the extent of twenty-five thousand dollars. That structure was carried away with others standing in the way of the rushing, roaring flood of logs, and great damage followed.

THE *Mining and Scientific Press* says:—Don't over drive your machinery. The policy of driving our machinery is a losing one. When normal speed is on, and the machinery is running, all is well, but the moment the speed is increased beyond the natural bearing capacity, something must give way. It may not be at once, and the unnatural speeding may go on very well for a term, but the machine is wearing away faster than it should, and some of these days the man who runs it will be reminded of the old deacon's 'one-hoss shay.'

A LORTY mountain tramway is to be constructed up the famous Pike's Peak in the Rocky Mountains, Colorado, reaching to an altitude of 14,200 feet. It will be divided into three sections, the first worked by an engine at the lower end, the second by water power, utilized on the mountain side through a turbine wheel, and the third by an engine erected on the summit of the Peak. The supports will be made of trees about 24 feet high, on which a thick wire cable will be fastened. At intervals a large covered arm chair holding two persons, will be suspended about eight feet from the ground.

## E. S. VINDIN,

Commission, Shipping, Forwarding and General Agent.

## LUMBER MERCHANT

Office, Tempest's Block, Port Hope. 111

## DODGE & CO.

## Pine & Hardwood Lumber

Office:—Cor. East Falls Avenue and Stiles Street,

BALTIMORE, MD., U.S.A.

Correspondence Invited.

11112

## LUMBER

Shingles, Doors, Sash, Flooring, &c.,

WANTED,

STATE QUANTITIES AND PRICE TO

SHORE & DAVIS

Head Office, 514 Maine Street, Winnipeg, Man.

## EXTRA QUALITY

## Manilla Lath Yarn

Equal to the best Philadelphia make.

Samples mailed on application. For

Sale only by

GEORGE STETHEM

PETERBOROUGH, Ont.

619

CRATEFUL—COMFORTING.

## EPPE'S COCOA

BREAKFAST.

"By a thorough knowledge of the natural laws which govern the operations of digestion and nutrition, and by a careful application of the fine properties of well-selected coconuts, Mr. Eppe has provided our breakfast tables with a delicately flavored beverage which may save us many heavy doctors' bills. It is by the judicious use of such articles of diet that a constitution may be gradually built up until strong enough to resist every tendency to disease. Hundreds of subtle maladies are floating around us ready to attack wherever there is a weak point. We may escape many a fatal shaft by keeping ourselves well fortified with pure blood and a properly nourished frame."—*Civil Service Gazette*.

Made simply with boiling water or milk. Sold in tins and packets only (4 lb. and 1 lb.) by Grocers labelled thus:

JAMES EPPE & Co., Homoeopathic Chemists, London, England.

18117

## REST

not, life is sweeping by, go and dare before you die, something mighty and sublime leave behind to conquer time." \$36 a week in your own town. \$5 outfit free. No risk. Everything new. Capital not required. We will furnish you everything. Many are making fortunes. Ladies make as much as men, and boys and girls make great pay. Reader, if you want business at which you can make great pay all the time, write for particulars to H. HALLETT & Co., Portland, Maine.

DOWN'S ELIXIR

N. H. DOWN'S

VEGETABLE BALANCE

ELIXIR

Has stood the test for FIFTY-THREE YEARS, and has proved itself the best remedy known for the cure of Consumption, Coughs, Colds, Whooping Cough and all Lung Diseases in young or old. SOLD EVERYWHERE.

Price 25c. and \$1.00 per Bottle.

DOWN'S ELIXIR

## The American Hotel,

BARRIE, ONT.

Collier Street, Adjoining the Market.

RATES REASONABLE, CENTRAL LOCATION,

FREE BUS TO AND FROM ALL TRAINS.

Every accommodation for Commercial and LUMBERMEN.

W. D. McDONALD, Proprietor.

## J. K. POST & CO.

## LUMBER MERCHANTS

And Shipping Agents.

OSWEGO, N. Y.

## J. T. LAMBERT,

Lumber and Commission Agent.

ORDERS FOR DIMENSIONS AND ALL OTHER KINDS AND GRADES OF

## American Lumber

PROMPTLY ATTENDED TO.

Timber Limits and the Square

Timber Trade a Specialty.

Office, Wellington Street, OTTAWA. 1111

## FITS FPILEPSY

OR

## FALLING SICKNESS

Permanently Cured—No Humbug—by one Month's usage of Dr. Goulard's Celebrated Infallible Fit Powder. To convince sufferers that these powders will do all we claim for them we will send them by mail, post paid, a free Trial Box. As Dr. Goulard is the only physician that has ever made this disease a special study, and as to our knowledge thousands have been permanently cured by the use of these Powders. We will guarantee a permanent cure in every case or refund you all money expended. All sufferers should give these powders an early trial, and be convinced of their curative powers.

Price for large box \$3.00, or 4 boxes for \$10.00, sent by mail to any part of the United States or Canada on receipt of price, or by express, C. O. D. Address

ASH & ROBBINS,

20124 360 Fulton Street, Brooklyn, N. Y.

## CONSUMPTION

POSITIVELY CURED.

All sufferers from this disease that are anxious to be cured should try Dr. Kisser's Celebrated Consumption Powders. These powders are the only preparation known that will cure consumption and all diseases of the Throat and Lungs—indeed, so strong is our faith in them, and also to convince you that they are no humbug, we will forward to every sufferer, by mail, post paid, a Free Trial Box. We don't want your money until you are perfectly satisfied of their curative powers. If your life is worth saving, don't delay in giving these Powders a trial, as they will surely cure you.

Price for large box \$3.00, sent to any part of the United States or Canada, by mail, on receipt of price. Address

ASH & ROBBINS,

20124 360 Fulton Street, Brooklyn, N. Y.

D. FOWLER'S

EXTRACT-WILD

STRAWBERRY

CURES

CHOLERA

CHOLERA INFANTUM

DIARRHŒA

AND

ALL SUMMER COMPLAINTS

SOLD BY ALL DEALERS.

## IRWIN & PHILP

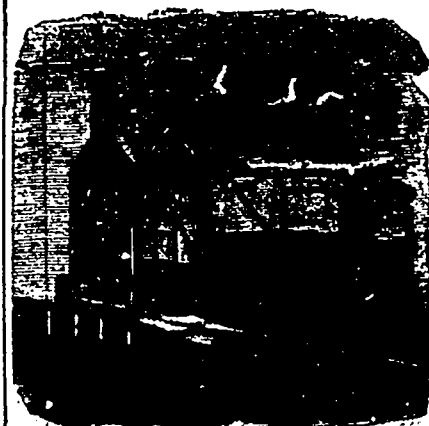
Commission

Lumber Dealers

FORWARDERS,

Shipping & General Agents

PORT HOPE.



## BARRON'S LUMBER DRYER

J. J. CURRAN, Inventor.

CURRAN & WOLFF, Proprietors for the U.S.

39 & 41, Franklin Street, Chicago.

A. F. BARRON,

Patentee and Builder for the Dominion of Canada,

Office, 9, Corn Exchange, MONTREAL.

Send for descriptive Pamphlet containing list of parties using this Dry Kiln in the United States.

Dryers built and in working order by the following Companies:

James Shearer, Montreal, James Crossen, (car builder), Cobourg, Ont., Canada Pacific R.R., Perth, Ont.; Kingston Car Works, Kingston, Ont.; Pike & Richardson (Coopers Co.), Chatham, Ont., and in course of construction, Grand Trunk R.R., London, Ont.; Steinhoff, Schnoor & Co., Staves and Heading, Wallaceburg, Ont.

12112

Burdock

BLOOD

BITTERS