

bursting of the buds; and using a white-wash as a winter spray. For the last remedy readers are referred to the Bulletin of the Ontario Agricultural Department "Instructions in Spraying."

Rot or Monilia. This fungus, which also affects the plum and cherry, is worse on early varieties and in a wet season. In gar-

dens where only a few trees are grown the affected specimens should be picked off and destroyed. A systematic use of the Bordeaux mixture will check it to a considerable extent.

The two most injurious insects to the peach are the curculio and the peach-borer. Paris green, four ounces to forty gallons, with a pound of lime added, will check the former. A thick wash compound of cement and skim-milk applied early in July will also be effective, and will prove more adhesive than any other wash.

M. BURRELL.

St. Catharines, Ont.

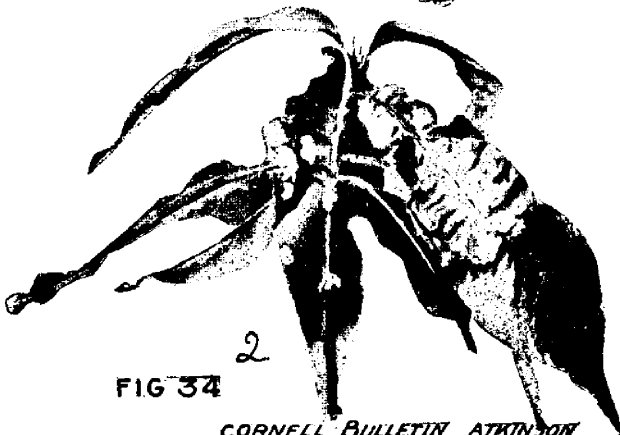


FIG 34

CORNELL BULLETIN ATKINSON



FIG. 35

Effect of soft rot. *Monilia*.