

No Ground for Complaints



WHEN THE COFFEE IS MADE WITH

Lipton's Celebrated Essence

— OF —
Coffee & Chicory

You are always certain of obtaining a cup of good COFFEE, and getting it quickly.

Once you have used this ESSENCE you will always use it, for while the price is lower than some, the quality is the best.

Ask your grocer for a Bottle of LIPTON'S COFFEE ESSENCE to-day.

may19.eod.t

THE LIVERPOOL & LONDON & GLOBE INSURANCE COMPANY, LTD.

For generations this great Company has furnished to the insuring public the best security, the best contract, and the best treatment obtainable in the Insurance World, and continues the same policy that has characterized it for 85 years, stronger and more progressive than ever.

THAT IS WHY WE LEAD.

BOWRING BROTHERS, LIMITED.
AGENTS FOR NEWFOUNDLAND.

jan3.6m.eod

REDUCED PRICES

Acadia

Marine Engines

SIZES 3 H.P. and 4 H.P. ONLY.

On account of being overstocked in three and four horse power Marine Engines, we have decided to reduce the price on these Engines until July 1st, 1925, after which date they will be sold at the regular price.

Fishermen requiring new three and four horse power Marine Engines, with complete equipments, should communicate with us immediately.

Acadia Gas Engines,

Limited
St. John's, Nfld.

may28.eod.t

NEW ARRIVALS

POUND SHEETING, PERCALES, SHIRTING, WHITE and STRIPED FLETTE, ASSORTED COLOR CREPE, CRETONNE, QUILT COTTON, TABLE OIL CLOTH, FLEECE LINED UNDERWEAR, BRACES, HOSE, etc. AT LOWEST PRICES.

Avalon Wholesale Dry Goods Company, Limited.
303 WATER STREET.

apr7.3m.eod

DULEY'S for ELECTRIC TABLE LAMPS and STANDARD READING LAMPS.

We have just received a selection of Electric Lamps, mahogany stands with beautiful silk shades, 12" 18" 22" in width. They are really the finest we have ever had the pleasure of offering to our patrons—particularly our

"STANDARD READING LAMP"
Attractive wooden stand 60" high with a 22" shade of wonderful design.

PRICE ONLY \$35.00.

We invite inspection of these Lamps as we feel sure you will find one suitable for your home.

T. J. DULEY & CO., Ltd.

The Reliable Jewellers & Opticians,
Water Street.

jan6.tu.f.17

Nothing Like These Results A Year Ago or Now

It is no trick to build a car that will go 65 or 70 miles an hour if it has a power plant big enough to haul a freight train.

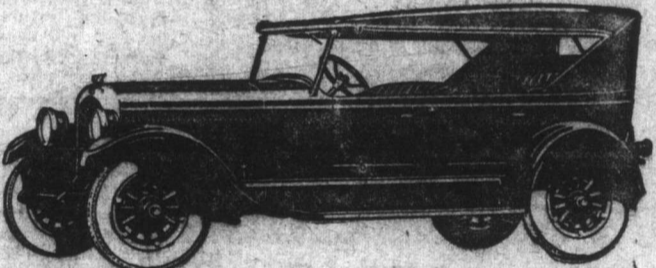
It's a great achievement to get over 70 miles an hour out of a motor of 5-inch bore and 4 1/2-inch stroke, with gasoline mileage safely above 20 miles per gallon.

And that's the wonder of the Chrysler Six—a wonder so different and so superior that Chrysler was forced to build over 32,000 cars to meet the first-year demand.

Of course you don't want to drive your Chrysler over 70 miles an hour. In fact you may never go that fast. But there is something you do want that only a speed-ability of 70 miles can give.

That something is sure, steady power for steepest hill or deepest sand, a pick-up to flash you out of a traffic tangle, sturdy, dogged pull so you can throttle to five, even two miles an hour, on high without "backing."

That's Chrysler performance in a nutshell. You surely must drive the car. It's the only way you can fully appreciate that it is the best built car you ever rode in. We are always eager to demonstrate the Chrysler.



THE TOURING—\$2,295.00

Marshall's Garage

WATER STREET WEST

Showroom: Prescott and Duckworth Streets.

mar24.f.17

SLATTERY'S Wholesale Dry Goods Co., LIMITED.

— IN STOCK —

- | | |
|------------|-----------------|
| PERCALES | GINGHAMS |
| SHIRTINGS | LAWNS |
| NAINSOOKS | DENIMS |
| COTTONADES | SCRIMS |
| LINGETTE | CREPES |
| TOWELS | TOWELING |
| HOSIERY | UNDERWEAR, etc. |

SLATTERY'S Wholesale Dry Goods Co., LIMITED.

apr120.m.w.f.2m.eod

He is satisfied—so will you be if you use

MUSTAD'S

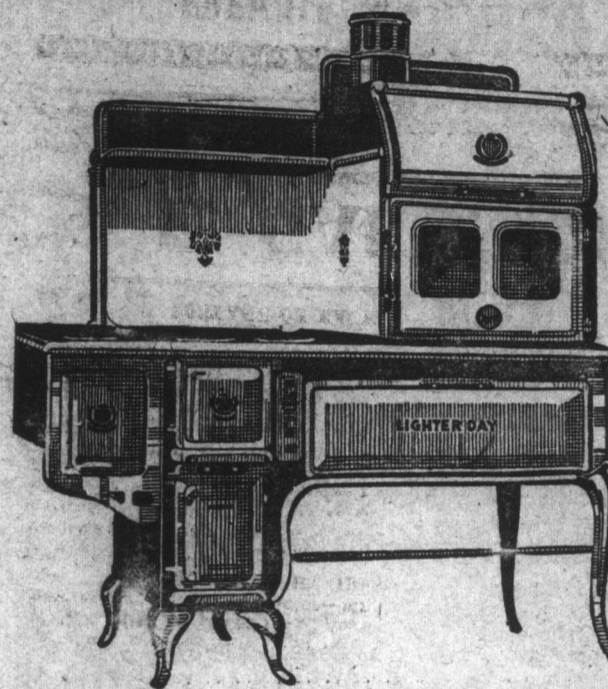


HIGHEST QUALITY

FISH HOOKS.

mar12.tu.f.17

Lighter Day RANGE



Blue Enamel Finish, Steel Polished Top. Fitted with Hot Water Back.

\$160.00

Wm. J. Clouston Limited

184 WATER STREET.

apr3.f.tex

Cadiz Salt!

Afloat and ex. Store: Beck's Cove.

COAL!

SCREENED NORTH SYDNEY.

BURNSIDE \$12.20
WELSH ANTHRACITE \$20.00

A. H. Murray & Co. Ltd.

Coal Office: 'Phone 1867 Beck's Cove

Your Favourite Author

JEFFERY FARNOL—HIS LATEST: "THE LORING MYSTERY" in which Mr. Farnol introduces a new and delightful character—Mr. Jasper Shrig . . . \$1.50

- OTHER BOOKS BY JEFFERY FARNOL:
- Sir John Dering \$1.50
 - The Broad Highway \$1.40
 - The Amateur Gentleman \$1.40
 - The Money Moon \$1.40
 - The Hon. Mr. Tawnish \$1.40
 - The Chronicles of the Imp \$1.40
 - Baltane the Smith \$1.40
 - The Definite Object \$1.40
 - The Gentle of the Duke Jocelyn \$1.50
 - Our Admirable Betty \$1.50
 - Black Bartlemy's Treasure \$1.40
 - Martin Conish's Vengeance \$1.40

POSTAGE ON EACH, 4c. EXTRA.

S. E. GARLAND

Leading Bookseller & Stationer, 177-9 Water Street, may21.eod.t

FREIGHT SERVICE.

Montreal to St. John's—Sailings for May.

S.S. "HITZERWOOD" will leave Montreal on May 30th, and Charlottetown on June 4th, for St. John's, Nfld.

THE CANADIAN STEAMSHIP LINES, LTD., McGill Street, Montreal.
CARVELL BROTHERS, Charlottetown, P.E.I.
HARVEY & CO., LTD., St. John's, Nfld., Agents.

may15.w.f.17

Nfld. Government Railway.

FREIGHT NOTICE—LABRADOR STEAMSHIP SERVICE.

Freight for undermentioned ports on above route per S.S. MEIGLE, accepted at Bowring's Coastal Wharf, Wednesday, June 3rd, and Thursday, June 4th, from 9 a.m. to 5 p.m.

St. Anthony, Battle Hr., Spear Hr., Francis Hr., Fishing Ship's Hr., Ship Hr., Occasional Hr., Squares Islands, Triangle, Snug Hr., Venison Island, Harp Hr., Bolster's Rock, Comfort Bight, Frenchman's Island, Punch Bowl, Webber's Cove, Flat Island, Lady Cove, Batteau, Black Tickle, Spotted Islands, Sand Bank, Red Point, Indian Tickle, Wolf Islands, Black Island, Grady, Long Island, Cartwright, Pack's Hr., George's Island, Indian Island, Rigolet, Indian Hr., Smoky White Bears, Emily Hr., Horse Hr., Holton.

LABRADOR STEAMSHIP SERVICE—SAILING NOTICES.

S.S. SAGONA will leave Bowring's Coastal Wharf, daylight, Saturday, May 30th, calling at Conception Hr., Hr. Main, Brigus, Cupids, Bay Roberts, Hr. Grace, Carbonear, Western Bay and regular ports as far north as Holton. (Conception Hr. and Western Bay are ports of call only on first trip via S.S. Sagona).

S.S. MEIGLE will leave Bowring's Coastal Wharf, daylight, Saturday, June 6th (instead of June 1st), calling at Hr. Main, Brigus, Cupids, Bay Roberts, Hr. Grace, Carbonear and regular ports as far north as Holton.

INCREASED PASSENGER TRAIN SERVICE—ST. JOHN'S TO CARBONEAR.

Commencing Monday, June 1st, evening trains will operate DAILY (except Sunday) between St. John's and Carbonear, viz:

Leave St. John's 6 p.m. Arrive Carbonear, 10.25 p.m.

Leave Carbonear 4.15 p.m. Arrive St. John's 9.15 p.m.

Regular morning train will operate in both directions daily (except Sunday) as heretofore.

Nfld. Government Railway.

Red Cross Line

NEW YORK. HALIFAX. ST. JOHN'S

PROBABLE SAILINGS FOR MAY.

From New York:	From St. John's:
May 23rd ROSALIND	May 12th ROSALIND
May 30th SILVIA	May 20th SILVIA
May 30th ROSALIND	June 6th ROSALIND

THROUGH RATES QUOTED TO ALL PORTS.

WINTER PASSAGES NOW EFFECTIVE.

Round trip tickets issued at special rates with six months stop-over privileges.

For further information, apply to

BOWRING & COMPANY, 17 Battery Place, New York
G. S. CAMPBELL & CO., HARVEY & CO., LTD.,
HALIFAX, N.S. ST. JOHN'S, Nfld.
Agents. Agents.

Farquhar Steamship Company

BOSTON, MASS.—HALIFAX, N.S.—ST. JOHN'S, Nfld. SERVICE.
S.S. SABLE I. (Passengers and Freight).

Leaves Halifax May 30th June 13th for
Leaves Boston June 2nd June 18th for
Leaves Halifax June 5th June 19th for
Leaves St. John's June 9th June 23rd for

(Subject to change without notice).

Fare \$30.00 between Halifax and St. John's; \$51.50 between Boston and St. John's, including meals and accommodations.

Apply: HARVEY & CO., LTD., St. John's, Newfoundland.
FARQUHAR STEAMSHIP COMPANIES—Head Office, Halifax.

Susu Shipping Co., Ltd.

FOGO MAIL SERVICE.

The S.S. SUSU sails on Tuesday next, June 2nd, for the following ports:

Catalina, Port Union, Greenspond, Valleyfield, Wesleyville, Lumsden, Offer Wadhams, Peckford's Island, Musgrave Harbor, Lade Cove, Carmanville, Fredericton, Main Point, Gander Bay, Victoria Cove, Horwood's, Stagg Hr., Indian Islands, Seldom-Come-By, Tilting, Joe Batt's Arm, Fogo and Change Islands.

may15.f.s.m.t

FREIGHT!

Regular Steamer Sailings from Montreal via Summerside, P.E.I., to St. John's.
MURRAY TRANSPORT CO., LTD.

Montreal Agents: THOS. HARRING & SON, LTD.
Board of Trade, Montreal
Summerside Agents: HARRING & ARNETT.
St. John's Agents: A. H. MURRAY & CO., LTD.
apr30.eod.t