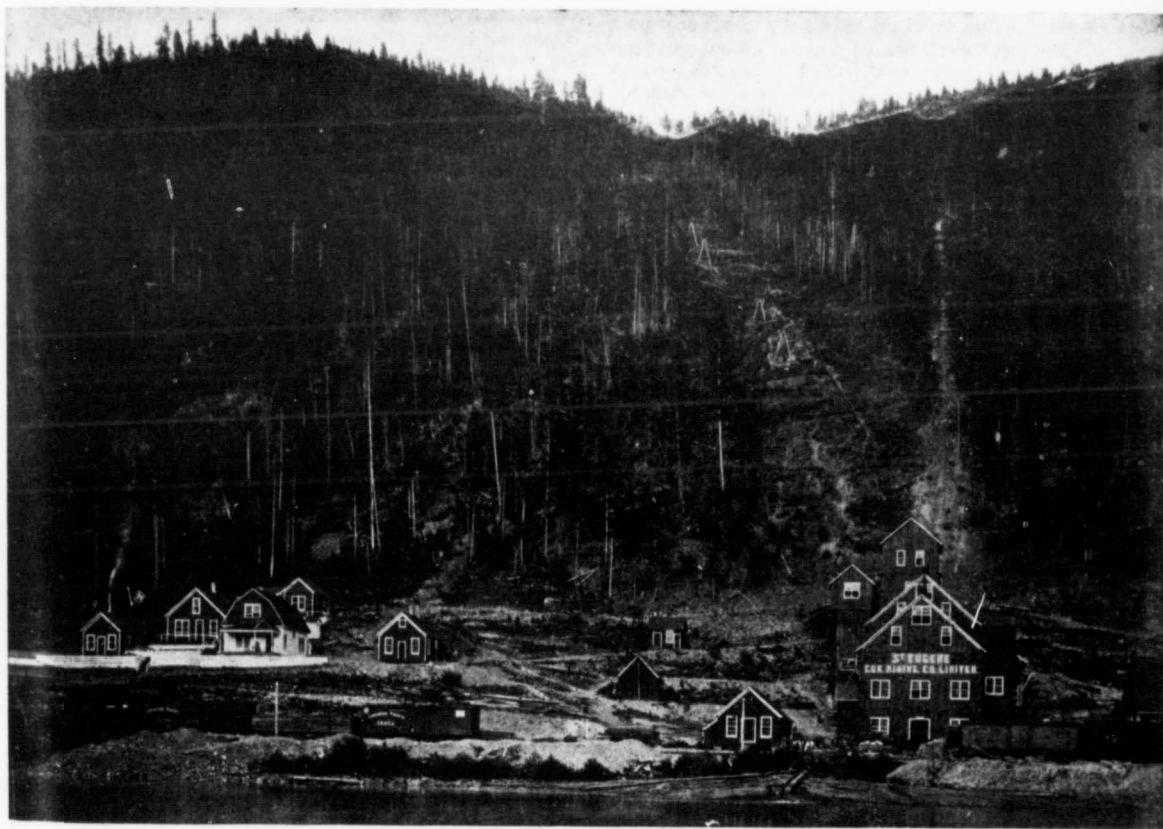


From the bottom of the shaft, at 1,925 feet below the summit of the hill and 50 feet lower than the water level of the lake, the main vein has been drifted on for about 900 feet, besides which there are some 600 feet in other drifts and cross-cuts.

There are two known parallel veins running about east and west the whole length of the property, from the top of the hill, where the St. Eugene group is situate, down the hill through the Moyie and Lake Shore groups, and into ground below the level of the lake. These veins are at a distance apart, varying

bottom of the shaft—but these have not yet been developed. As the mine workings get deeper they appear to be entering quite a network of veins.

So far as opened up the ore has occurred in three large shoots or bodies separated by barren ground. That on the St. Eugene has been developed for a length of about 400 feet and to a depth of 500 feet, and its width found to vary from three feet to twenty feet. Whilst the vein on its east and west course dips to the south at an angle of about 70 degrees, the ore shoot dips to the east. The ore is galena with



A General View of the St. Eugene Mine at Moyie.

from 200 feet to 400 feet. They are called, respectively, the North Vein and the South Vein. Comparatively little work has been done on the latter. On the 1,700-foot level and on the two levels below in three cross veins, occurring at 100 to 200 feet apart, have been developed, and this work has proved them to be connecting links between the North and South veins, which are here about 250 feet apart. These cross veins carry large ore bodies ranging from four to thirty feet in width. In addition to these, three other cross veins were met with in the lowest workings—those opened out from the

zinc blende, and it runs generally higher both in silver and lead than that met with lower down the hill. For instance, the St. Eugene ore produced yielded in bulk 43 to 50 oz. silver and 67 per cent. lead, whilst that taken from the Moyie and Lake Shore sections of the mine averaged about 33 oz. silver and 63 per cent. lead. The ore shoot on the Moyie has been developed along a distance of about 500 feet and to a depth of 400 feet. Its width ranges from two feet to sixteen feet. Its general trend and dip are similar to those of the St. Eugene, but its ore body dips to the west. The shoot occurring at the west end of