

REAL ESTATE & CLASSIFIED

Miracle Food Mart, Zeller's open at Westdale

Two large retail newcomers to Mississauga opened their doors to the public last Wednesday morning—a Miracle Food Mart and a giant Zeller's at the new Westdale Plaza at Dundas Street and Erindale Station Road.

Miracle Food Mart covers 40,000 square feet of area with the triple role of providing food, household dry goods and pharmaceutical items under one roof.

The supermarket is the 180th food store in the Steinberg's Limited chain and the 48th in the Miracle Food Mart Division. Sam Steinberg himself attended a pre-opening sneak preview cocktail party last Tuesday night along with dozens of invited guests.

A non-food section carries a wide selection of home oriented merchandise such as hardware and automotive parts, towels, pillows, glassware, woodenware,

work clothes, blankets, baby needs and stationery.

The complete pharmacy installed in the store will provide full prescription service along with a wide range of health and beauty products.

The food portion of the latest M.F.M. outlet offers wide aisles, conveniently spaced merchandise and the largest dairy, frozen food and self-serve delicatessen departments in the chain. The store also boasts its own personal service delicatessen.

The 81,000 square foot Zeller's County Fair is a welcome addition to the east Erindale area bringing discount type retailing into a community largely without such stores.

As a complete department store it is the largest Zeller's in the Toronto region and employs some 150 local sales and office personnel.

Zeller's also incorporates a complete pharmacy operation.



One of many features in Miracle Food Mart Store which opened last week in Westdale Mall on Dundas Street is produce department (above). Free standing counters are designed to guarantee freshness of fruit and vegetables. At right Sam Steinberg, chairman of Steinberg's board of directors, store manager Michael Beer and president Neil Dobrin were on hand for sneak preview of new store.



WALTER P. TOBIAS, B. Comm.

CHARTERED ACCOUNTANT

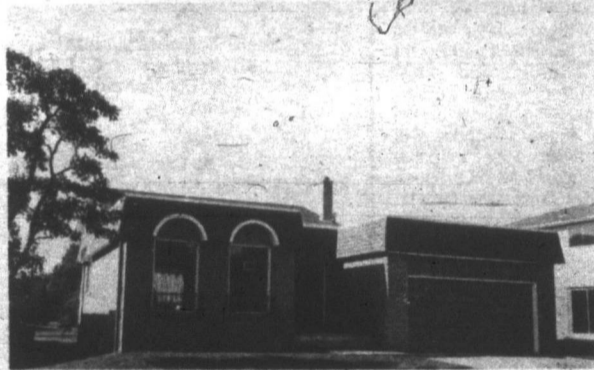
3322 Lonefeather Cres.
Mississauga

Telephone
625-0503



MUNDEN PARK

\$33,900—Well appointed family home offering 4 bedrooms, in this central location. Large living room with open fireplace. Spacious kitchen and professionally finished recreation room. Fully carpeted, attached garage and very private huge lot. Can be yours by calling Beryl Maltby 279-3001 evgs. 822-0222.



MISSISSAUGA Trenholme Estates

\$45,900—for elegant and gracious living, this unusual plan, provides the best in value for the young executive. Features include 4 bedrooms, family room with fireplace and walk-out. Ground level laundry room, and bright Hollywood style kitchen. This outstanding home must be seen to appreciate the spaciousness and value. Call Mr. Ford 279-3001 res. 278-0004 Birch & Maltby Limited.

Is there a move in your life?

Call us!

Listings urgently required to satisfy our waiting buyers. Phone now and put our competent staff and resources of our establishment at your service.



Birch & Maltby

LIMITED REALTOR

279-3001

APPLEWOOD ACRES PLAZA



MULTIPLE LISTING SERVICE

MISSISSAUGA

Album for folk duo

Edward and Harding, the folk duo from the Lakeview area, are scheduled to cut their second album sometime within the next two months.

Their first album, titled simply Edward and Harding, reached the low seventies on album sales in Canada but the record did better on the west coast than in their native Ontario.

Recently they taped three performances on CTV including an appearance with Kenny Rogers and the First Edition on Rolling on the River.

This week they leave for a six week tour of U.S. colleges in Pennsylvania, Maryland and the Virginia's.



REAL ESTATE
consult
METRO
TRUST

274-3663