

**\$15.50**  
 ROUND TRIP TO  
**New York**

**Thursday, Oct. 20th**

Visit the Parks, see the "Skyscrapers," Art Galleries, the Battery, Wall Street, the Docks and Ocean Liners. The Hippodrome, Theatres and Vaudeville Houses are all open with new plays and performances.

*Tickets good on Hudson River Steamers between Albany and New York (in either direction) without extra charge.*

**Reserve Accommodations Today**

Tickets will be good on all regular excepting limited trains.

For railroad tickets and sleeping-car accommodations, call at T. H. & B. Ry., Hunter Street station; Grand Trunk Ry., Stuart St. station or address

FRANK C. FOY  
 Canadian Pass. Agent  
 80 Yonge St. Toronto



"For the Public Service"

**NOW THE THIRD CITY IN CANADA**

**WINNIPEG**

(MANITOBA)

**The Supply City of Western Canada**

Offers greater combined advantages to manufacturers and capitalists than any city in Canada. The remarkable development of this great central market is creating an unprecedented demand for home industries.

**Winnipeg wants these Manufacturers**

and offers cheap power, cheap sites, low taxation, varied raw materials, the best of labor conditions, unexcelled railway facilities, and the earnest support of a community that recognizes the importance of its industries. Over a billion dollars produced by the farms of Western Canada in the past five years, and this with only eight per cent. of the available land under cultivation. Consider what this development makes possible for the home manufacturer.

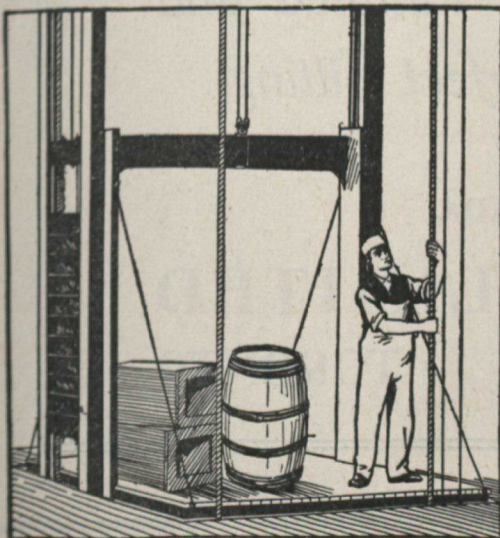
**YOUR OPPORTUNITY**

**Get Close to this Market.**

Special openings for manufacturing farm and agricultural implements, including gas and steam tractors; paper and strawboard mills, men's clothing, ladies' ready-to-wear goods, food stuffs, starch factory, boots and shoes, felt wear, metal goods, wire nail factory, hardware specialties, flax and jute works, beet sugar factory, elevator machinery, electrical fixtures and appliances of all kinds, automobiles and commercial motor carriages, home and office furniture, leather goods, cereal foods, dairy supplies, building materials, stoves, ranges, furnaces and heating plants and twenty-five other smaller lines.

Special reports prepared and mailed free of charge on the manufacturing possibilities of any of these lines of industries, by addressing CHAS. F. ROLAND, Commissioner of Industries, Winnipeg, Canada.

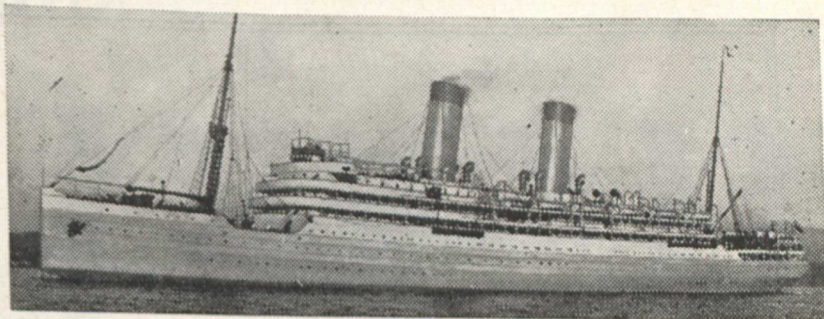
**Hand Power Elevator--\$70.00**



**Otis-Fensom  
 Elevator  
 Company  
 Limited**

Head Office, TORONTO, ONT.

BRANCH OFFICES:  
 Montreal - 368 St. James St.  
 Ottawa - 9 O'Connor St.  
 Winnipeg - - McRae Block  
 Vancouver - 155 Alexander St.



*The*  
**ROYAL LINE**

CANADIAN NORTHERN STEAMSHIPS

Steamers sailing fortnightly from MONTREAL and QUEBEC to BRISTOL are the fastest and finest appointed Steamers sailing between Canada and Europe. They hold the

3 days  
 14 1/2 hours from  
 land to land

Trans-Atlantic  
 Record

5 days, 20 hours  
 from  
 Bristol to Quebec

THE STEAMERS

**"ROYAL EDWARD"**

AND

**"ROYAL GEORGE"**

are driven by the newest type of turbine engines, insuring a maximum of speed and minimum of vibration. Their equipment is the finest ever seen in the St. Lawrence--large state-rooms, spacious, social apartments, sheltered promenade decks, artistic furnishings, perfect service, and ventilation by thermo-tank system.

For full particulars of rates, sailings, etc., write Wm. Phillips Acting Traffic Manager, Toronto, Ont.; Guy Tombs, Acting General Passenger Agent, Canadian Northern Steamships, Limited, Montreal; or Wm. Stapleton, General Agent, Winnipeg, Man.



**"Highlands of Ontario"  
 FOR BIG GAME**

Deer and Moose abound in all that district known as the "Highlands of Ontario", reached by GRAND TRUNK RAILWAY SYSTEM.

**Open Season**

DEER--November 1 to November 15 inclusive.  
 MOOSE--November 1 to November 15 inclusive. In some of the northern districts of Ontario, including Temagami, the open season is from October 16 to November 15 inclusive.

**Open Season for Small Game in Province of Ontario**

DUCKS--Sept. 15 to Dec. 15 inclusive. SNIPE--Sept. 1 to Dec. 15 inclusive.  
 GEESE--Sept. 15 to April 15 inclusive. WOODCOCK--Oct. 15 to Nov. 15 inclusive.  
 PLOVER--Sept. 1 to Dec. 15 inclusive. HARES--Oct. 1 to Dec. 15 inclusive.  
 QUAIL--Nov. 15 to Dec. 1 inclusive. SQUIRRELS--Nov. 15 to Dec. 1.  
 PARTRIDGE--Oct. 15 to Nov. 15 inclusive.

Write the undersigned agents for a copy of "Haunts of Fish and Game" containing maps, game laws and all particulars.

J. D. McDONALD, Union Station, Toronto, Ont.

J. QUINLAN, Bonaventure Station, Montreal, Que.

W. E. DAVIS,  
 Passenger Traffic Manager,  
 Montreal.

G. T. BELL,  
 Ass't Passenger Traffic Manager,  
 Montreal.

GEO. W. VAUX,  
 General Passenger Agent,  
 Montreal.

**NEW**

**Ottawa-Montreal Express**



**DAILY EXCEPT SUNDAY.**

Lv. West Toronto.. 9.45 p.m.	Lv. Montreal..... 10.45 p.m.
Lv. North Toronto. 10.00 p.m.	Ar. North Toronto. 7.50 a.m.
Ar. Montreal..... 7.00 a.m.	Ar. West Toronto. 8.05 a.m.

Through Coaches and Sleepers to Montreal and Ottawa.

**Train for Ottawa and Montreal  
 from Union Station, 10.30 p.m.  
 Instead of 11.00 p.m.**

Through Sleepers for Montreal and Ottawa.

Tickets, Sleeping Accommodation, etc., West Toronto, North Toronto, Toronto City, Ticket Office: King Edward Hotel.