



Ladies' Eton Jacket, with Bell Sleeves:  
7 sizes.  
Bust measures, 32 to 42 inches.  
Any size, 1s. or 25 cents.



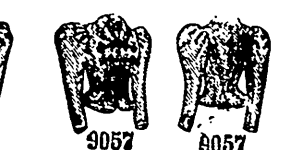
Ladies' Jacket, (To be Closed at the Neck Only)  
Known as the Guardsman Jacket:  
9 sizes. Bust measures, 30 to 46 inches.  
Any size, 1s. 3d. or 30 cents.



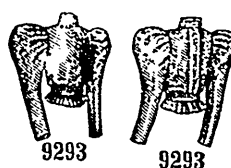
Ladies' Jacket (To be Made with Round or Square Lower Front Corners and Worn Open or Closed) Known as the Derby Jacket: 9 sizes.  
Bust measures, 30 to 46 inches. Any size, 1s. 3d. or 30 cents.



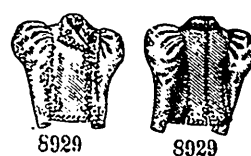
Ladies' Blouse-Jacket (To be Made With or Without Breast Pockets and Lapels):  
7 sizes. Bust measures,  
30 to 42 inches.  
Any size, 1s. 3d. or 30 cents.



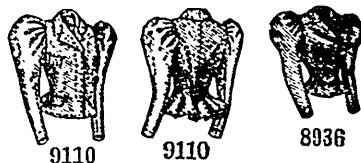
Ladies' Single-Breasted Close-Fitting Military Jacket (To be Made with Square or Rounding Lower Front Corners) Known as the Lancet Jacket: 9 sizes. Bust measures, 30 to 46 inches. Any size, 1s. 3d. or 30 cents.



Ladies' Russian Jacket (To be Made With or Without Fitted Body-Lining) Known as the Cosack Blouse: 6 sizes.  
Bust measures, 30 to 40 inches.  
Any size, 1s. 3d. or 30 cents.



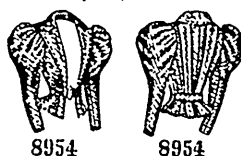
Ladies' Double-Breasted Jacket or Coat (Known as the Covert Coat): 8 sizes.  
Bust measures, 30 to 44 inches.  
Any size, 1s. 3d. or 30 cents.



Ladies' Jacket, with Fly Front (Known as the Covert Coat):  
9 sizes.  
Bust measures, 30 to 46 inches.  
Any size, 1s. 3d. or 30 cents.



Ladies' Close-Fitting Double-Breasted Jacket: 9 sizes.  
Bust measures,  
30 to 46 inches.  
Any size, 1s. 3d. or 30 cents.



Ladies' Jacket (To be Worn Open and Rolled to the Waist or Closed at the Bust) For Cycling and other Outdoor Wear: 9 sizes. Bust measures, 30 to 46 inches.  
Any size, 1s. 3d. or 30 cents.



Ladies' Eton Jacket (To extend to the Waist or Nearly to the Waist), with Vest having Full Front: 7 sizes.  
Bust measures, 30 to 42 inches.  
Any size, 1s. 3d. or 30 cents.



## VIAU'S CORSETS

Long Waisted  
No Padding

These corsets give a perfect curve to the form, there being no pressure on the chest, as the Spring holds the Corset in a natural way without any padding. We also make Corsets for stout ladies and those who ride bicycles. Send for circular.

### Price List:

Gray, \$2.50 up  
White, \$3.00 up  
Black, \$4.00 up

**B. VIAU,** 69 WEST 23RD STREET,  
NEW YORK.



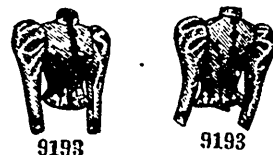
Misses' Jacket (To be Made with Round or Square Lower Front Corners and Worn Open or Closed) Known as the Derby Jacket: 7 sizes.  
Ages, 10 to 16 years. Any size, 1s. or 25 cents.



Ladies' Bolero Jacket, with Bell Sleeves:  
7 sizes. Bust measures, 30 to 42 inches.  
Any size, 1s. or 25 cents.



Ladies' Eton Jacket:  
9 sizes.  
Bust measures, 30 to 46 inches.  
Any size, 1s. or 25 cents.



Ladies' Military Jacket:  
9 sizes.  
Bust measures, 30 to 46 inches.  
Any size, 1s. 3d. or 30 cents.

## Sweetness and Light.

Put a pill in the pulpit if you want practical preaching for the physical man; then put the pill in the pillory if it does not practise what it preaches. There's a whole gospel in Ayer's Sugar Coated Pills; a "gospel of sweetness and light." People used to value their physic, as they did their religion,—by its bitterness. The more bitter the dose the better the doctor. We've got over that. We take "sugar in ours"—gospel or physic—now-a-days. It's possible to please and to purge at the same time. There may be power in a pleasant pill. That is the gospel of

## Ayer's Cathartic Pills.

More pill particulars in Ayer's Curebook, 100 pages.  
Sent free. J. C. Ayer Co., Lowell, Mass.