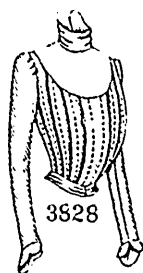


characterized by a round yoke-facing. Chiffon ruches outline the center-front and yoke facings and decorate the top of the small sleeve, developed in puffed. The sleeve is comfortably close-fitting and is completed by a flaring cuff that falls over the hand. A Liberty satin scarf knotted at the ends of the revers and a crush belt of panne closed under an artistic bow are dainty accessories of the mode.

Spangled net over silk and striped silk may be combined for this effective waist, which may be decorated with lace appliqué, jewelled passementerie, etc.

FIGURES NOS. 141 R, 142 R AND 143 R.—LATEST FANCIES IN DRESSY WAISTS.  
(For Illustrations see Page 289.)



3828

FIGURE NO. 141 R.—This pictures a Ladies' waist. The pattern, which is No. 3787 and costs 10d. or 20 cents, is in eight sizes for ladies from thirty to forty-four inches, bust measure, and may be once more seen on page 313.

The attractive waist is free from ornamentation, the rich fabric employed being sufficiently decorative in itself. Tucked Liberty satin shirred on cords inserted in the tucks was here combined with plain Liberty satin for the waist, with which are worn a dressy stock and tie and a crush belt clasped with an antique silver buckle. The waist closes at the left side and has a seamless back and front that are smooth at the top but have gathered fulness at the bottom. The waist pounces at the front, and the well-cut sleeve, which has scantily gathered fulness at the top, is extended in a Venetian point over the hand.

Panne, cloth, cashmere, satin sultan, and similar fabrics may be selected for the mode, which is susceptible of a variety of decorative schemes.

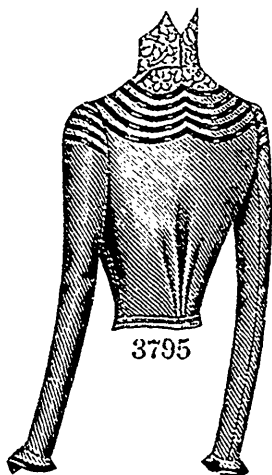
FIGURE NO. 142 R.—This shows a Ladies' basque-waist. The pattern, which is No. 3770 and costs 10d. or 20 cents, is in eight sizes for ladies from thirty to forty-four inches, bust measure, and is differently represented on page 311.

The demand for separate bodices is quite as ever, the only difference being that these useful affairs are more elaborate than in previous years. A very dressy waist is here pictured made of panne and tucked white silk and embellished with lace appliqué. It has a deep, smooth yoke that is revealed in fanciful outline by the uniquely designed back and front. The blouse front has fulness at the bottom disposed in a double box-plait, and the seamless back is stretched smoothly over the



3795

Front View.



3795

Back View.

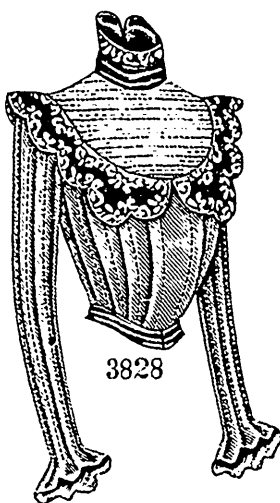
LADIES' BASQUE-WAIST, WITH FANCY YOKE.

(For Description see Page 314.)

figure. Both the back and front are extended in strap fashion over the shoulders, and the straps are prettily scalloped at their inner edges. The waist fastens invisibly at the left side and is completed by a high standing collar. The small two-seam sleeve is cut out on the upper side below a cap

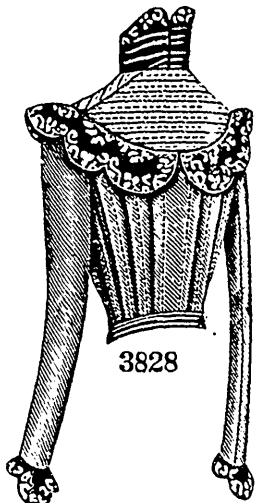
facing and flares gracefully at the wrist, where it is pointed. Cut cloth appliqué on taffeta may be combined with corded Liberty satin for the waist with satisfactory results.

FIGURE NO. 143 R.—This portrays a Ladies' waist. The pa



3828

Front View.



3828

Back View.

LADIES' TUCKED BASQUE-WAIST, WITH THE YOKE CLOSING ON THE SHOULDER AND THE LOWER PART OF THE WAIST AT THE CENTER (TO BE MADE WITH TUCKED SLEEVES OR WITH PLAIN SLEEVES AND FLARE CUFFS.)

(For Descriptions see Page 315.)

tern, which is No. 3683 and costs 10d. or 20 cents, is in nine sizes for ladies from thirty to forty-six inches, bust measure.

That old-time favorite, the surplice waist, is much in evidence this season. A handsome example of the mode is here represented made of figured silk combined with tucked satin and adorned with chiffon ruches. The seamless back is plain save for scanty gathered fulness at the bottom, but the fronts are rather full and are characterized by forward turning plaits extending from the shoulder to the lower edge. The fronts lap broadly in surplice fashion and are in V outline at the neck. With the waist is worn a removable chemise that is topped by a high stock that rises in rounding tabs at the back. The small sleeves are fancifully shaped at the wrist and have slight gathered fulness at the top.

The soft, pliant fabrics that drape prettily are the most suitable for such a waist. In crêpe de Chine and lace over satin the design will be very attractive.

FIGURE NO. 144 R.—LADIES' INDOOR TOILETTE.

(For Illustrations see Page 290.)

FIGURE NO. 144 R.—This includes a Ladies' shirt-waist and skirt. The shirt-waist pattern, which is No. 3841 and costs 10d. or 20 cents, is in nine sizes for ladies from thirty-four to forty-six inches, bust measure, and is also depicted on page 315. The skirt pattern, which is No. 3794 and costs 10d. or 20 cents, is in nine sizes from twenty to thirty-six inches waist measure, and is differently shown on page 326.

The up-to-date toilette here comprises a graceful skirt of dark cloth and a striped silk shirt-waist finished with stitching. Two narrow ruffles of satin edged with velvet ribbons and appliqués of velvet decorate the skirt, which is a four-gored mode. The skirt is fitted at the front and sides in the popular sheath style and is laid in a box-plait at the back. It falls in soft undulations below the hips and is in dip length.

The full fronts of the shirt-waist are cut bias and are gathered at the neck, but the fulness at the waist-line is held in place by tapes. The back is also bias and is shaped with a center seam; it is characterized by two backward-turning plaits at each side that converge toward the center at the bottom. The waist closes at the front with buttons and button-holes through an applied box-plait, and a high stock and a silk scarf bowed at the front complete the neck. The two-