

enger Traffic

anted
CANADA
from WINNIPEG

and Windsor, Ont., on
St. Mary's, Port Burwell
naive.
on Lake Ontario Shore
and Renfrew Junction,
ons on Sault Ste. Marie
stations Bethany Jun.

r Agent, Toronto.

P!
00
Wanted
RVEST
NIPEG

f a Cent Per Mile to

The Best of
unter Cars.
WOMEN
nion Station

me and agencies, Tor-
Milnet, Ont., and east
ve, including branches
Eastern Railway.

n Northern and N., St.
south of Toronto.

formation, apply to
ST. E., TORONTO,
ON.

RAILWAY



-MAIL TODAY

ase ship me, all charges
RARY OF UNIVERSAL
inen, and I agree to pay
th, beginning on the first
When I have paid for the

oy You

hire and other collection
consented to send out all
for, and to whom I will

sign this order.

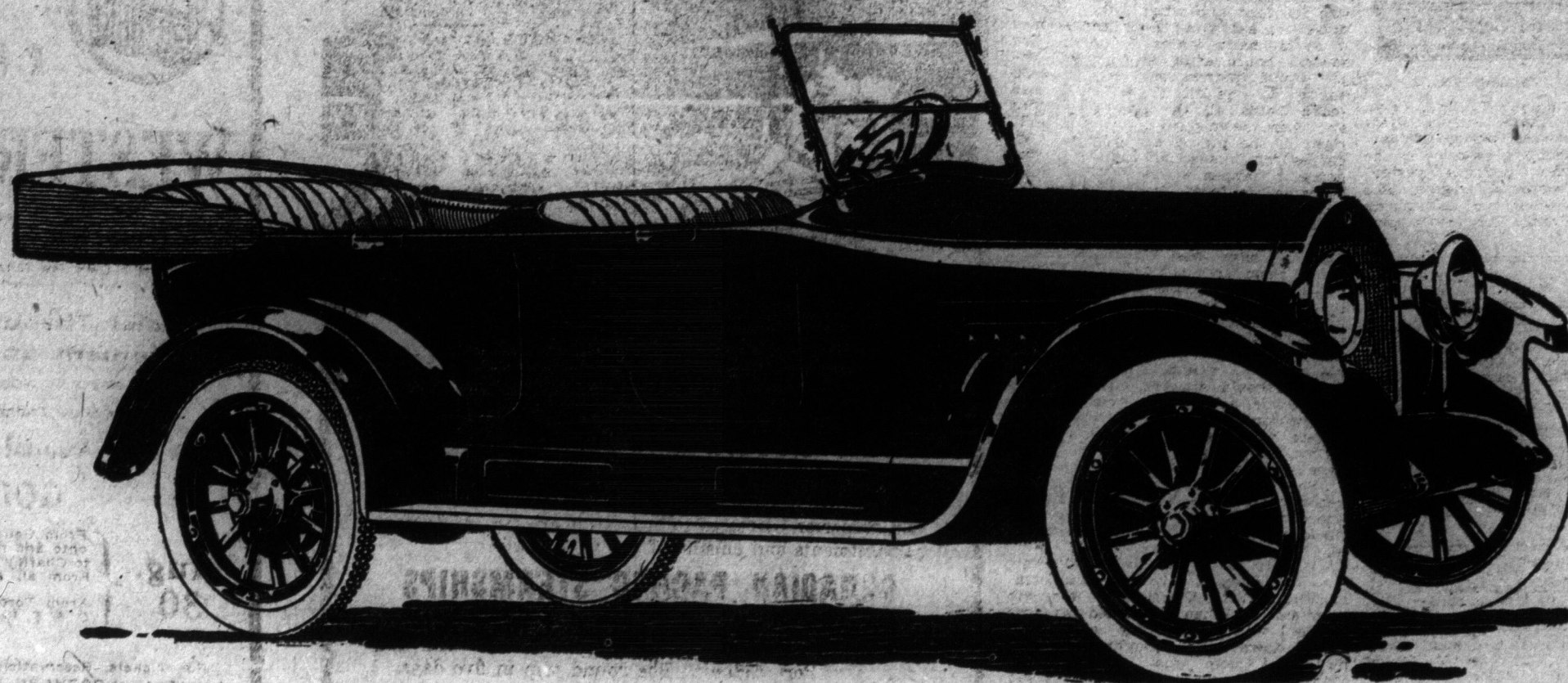
ST 10 PER CENT.

High Lewis.

Sterrell



A-27



See the Willys-Overland Exhibit in the Transportation Building

The New Willys Six Is Shown There For The First Time In Canada

Here it is—the new Willys Six—the car that has proved itself one of the biggest sensations of the show.

Examine it closely. Note the smart new double cowl—the slanting windshield and the long, low racy body lines. It's a perfect beauty from no matter what angle you view it.

And its beauty is more than surface deep.

For the new Willys Six responds with a snap and a go that will surprise and delight you.

That's because the Willys Six strikes a scientifically correct balance between

power and weight—a balance that you feel the instant you drive it.

The secret is greater power and sturdy light weight to support it—a combination that not only adds greatly to the joy of driving but also the life of your car.

The 45-horsepower motor develops excess power for all purposes. It is quick as a flash on the getaway; speedy and surprisingly economical.

Our great experience in building sixes together with the economies of our huge production has enabled us to produce what we believe to be one of the most scientifically balanced, popular priced sixes ever seen in the Dominion.

But, with all its snap and dash, the new Willys Six was not designed for speed alone. It is a real family car, one that will carry seven people—in comfort.

If you prefer a different type of motor car—say a Light Four or a Big Four or one with a Willys-Knight engine, it will pay you to investigate the Willys-Overland line first.

Body styles ranging from roadsters and sport models to sedans and limousines are on display in our salesrooms and will be on exhibit in the Transportation Building, during the Canadian National Exhibition.

Light Fours
5 Passenger Touring - 106 in. wheelbase
2 Passenger Roadster - 104 in. wheelbase
4 Passenger Sport Model - 104 in. wheelbase
5 Passenger Touring Sedan - 106 in. wheelbase

Model 85 Fours
5 Passenger Touring - 112 in. wheelbase
3 Passenger Roadster - 112 in. wheelbase
3 Passenger Touring Coupe - 112 in. wheelbase
5 Passenger Touring Sedan - 112 in. wheelbase

Light Sixes
5 Passenger Touring - 116 in. wheelbase
3 Passenger Roadster - 116 in. wheelbase
3 Passenger Touring Coupe - 116 in. wheelbase
5 Passenger Touring Sedan - 116 in. wheelbase

Willys-Knights
7 Passenger Four Touring - 121 in. wheelbase
7 Passenger Eight Touring - 125 in. wheelbase
4 Passenger Four Coupe - 114 in. wheelbase

Willys Sixes
7 Passenger Touring - 120 in. wheelbase
4 Passenger Club Six - 120 in. wheelbase
6 Passenger Sedan - 120 in. wheelbase

The Overland Sales Co., Limited—Distributors
94-100 RICHMOND STREET WEST, TORONTO. TELEPHONE ADELAIDE 661.

Willys-Overland, Limited

Willys-Knight and Overland Motor Cars and Light Commercial Wagons
Head Office and Works, West Toronto, Ontario