

NATURAL DRAFT MOIST AIR . . . **DRY KILNS**

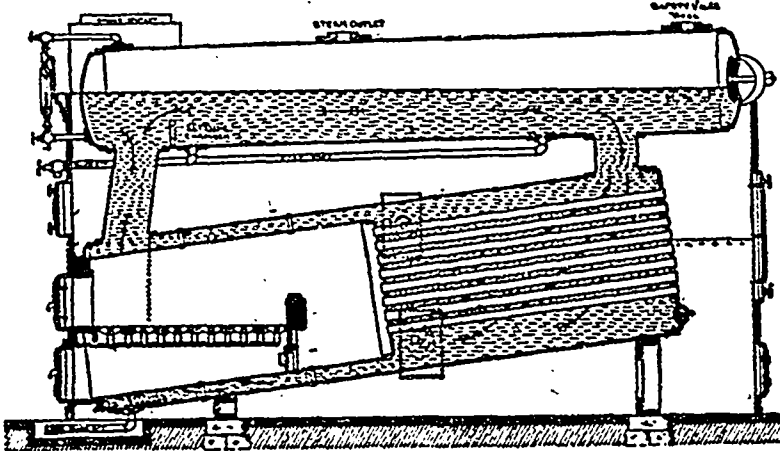
LUMBER TRUCKS and
TRANSFER CARS

Write for prices and particulars of the most simple and efficient Natural Draft Dryer on the market. Testimonials and list of users sent on application. Every square inch of heating surface is utilized to the uttermost and perfect ventilation and circulation is obtained by a very simple arrangement of ducts. Write for particulars to

SHELDON & SHELDON,
GALT, ONT.

FORMERLY McEACHREN HEATING & VENTILATING CO.

Pays For Itself



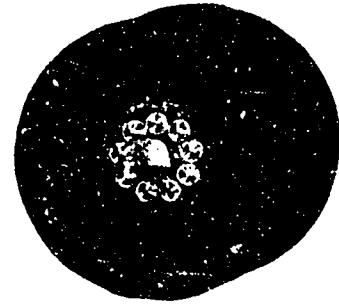
A Mumford Standard internally fired boiler requires from 10 to 25 per cent. less fuel than a return tubular boiler.

A saving of only 10 per cent. will cover the cost of the boiler in five or six years.

A Mumford boiler will therefore pay for itself several times during its lifetime.

ROBB ENGINEERING CO., Limited,
Amherst, N. S.

Agents: { William McKay, 320 Ossington Avenue, Toronto.
Watson Jack & Company, 7 St. Helen St., Montreal.
J. F. Porter, 355 Carlton Street, Winnipeg.



NO—the ordinary dry kiln truck doesn't cost as much as the **THE STANDARD** Channel Steel, Roller Bearing **DRY KILN TRUCK** does.

No. You see, the ordinary truck hasn't got the unbreakable **MALLEABLE** iron Wheels.

It hasn't got the **SHARP-POINTED** "anti-friction" steel-roller bearings, either.

We have some printed things on the subject that you might like to read. A request for Catalogue "D" will fetch them.

THE STANDARD DRY KILN CO.
Indianapolis, Ind.



WM. BAYLEY & SONS CO.

782-778 GREENBUSH STREET, MILWAUKEE, WIS.

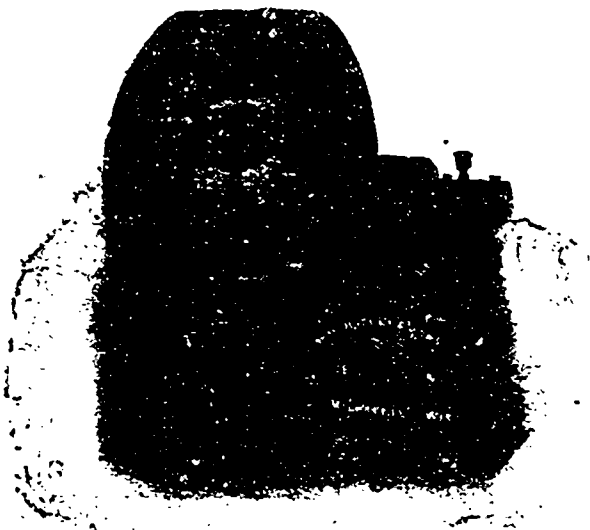
MANUFACTURERS OF **STEEL PLATE EXHAUSTERS**

Single and Double, for Handling Sawdust and Shavings.

Hot Blast Heating and Ventilating Apparatus for Factories, Dry Kilns, Blowers, Blast Gates, Disk Fans, Steel Roller Bearing Lumber Trucks, Transfer Trucks, Vertical and Horizontal Engines, Induced and Forced Draft Apparatus

Write Us and Get Illustrated Descriptive Catalogue.

BRANCHES: { The Ohio Blower Co., Cleveland, Ohio.
Zimmerman-Wells-Brown Co., Portland, Oregon.
The Globe Engineering Co., San Francisco, Cal.



SINGLE EXHAUSTER.