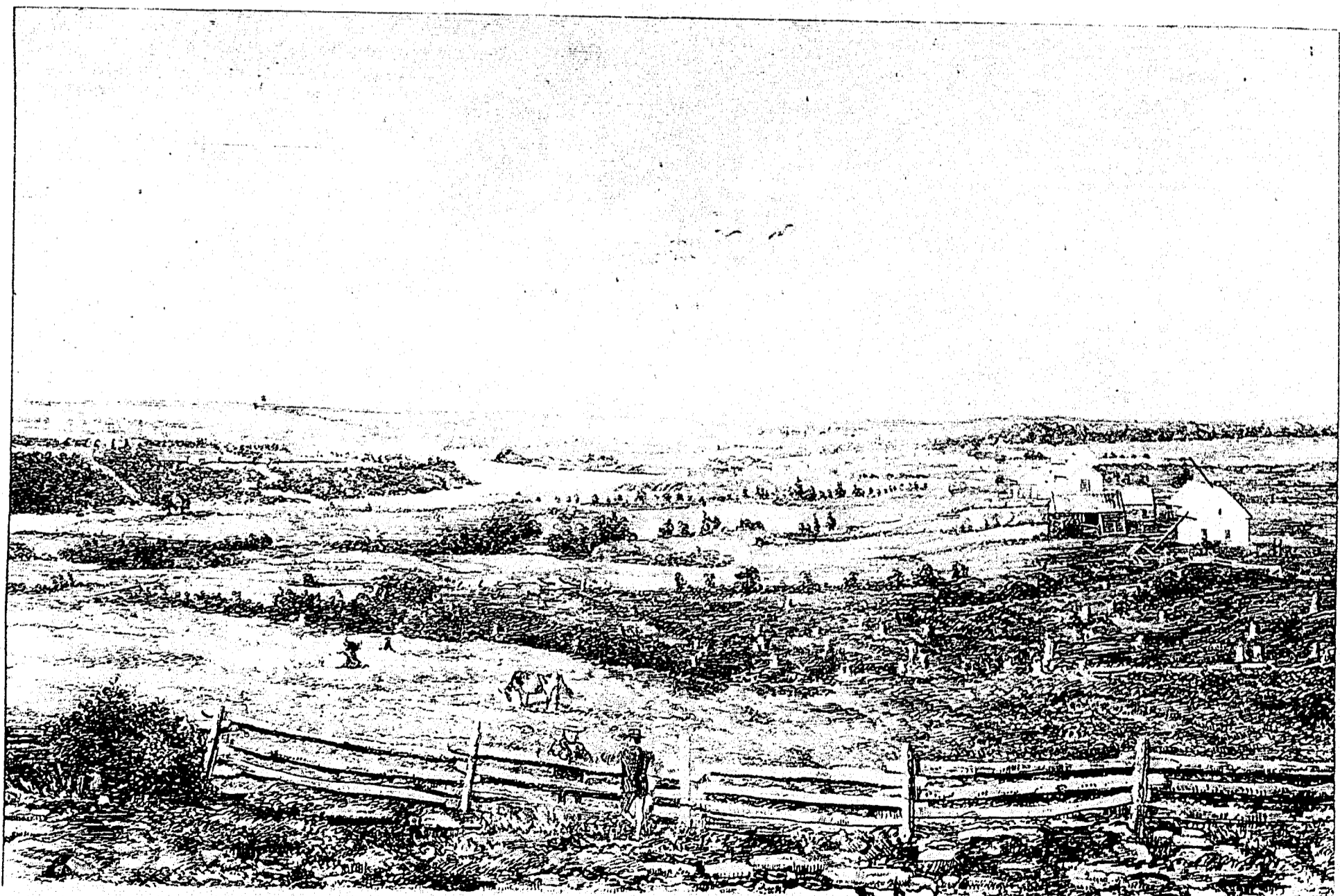


WOLFVILLE, N. S.—FROM A PHOTOGRAPH BY W. CHASE, HALIFAX.—SEE PAGE 182.



VIEW LOOKING UP THE RIVER ST. JOHN, N. B., 3 MILES ABOVE THE GRAND FALLS.—FROM A PHOTOGRAPH BY G. T. TAYLOR.—SEE PAGE 182.