

Miners Wanted

TO CHEW

PAY ROLL

Plug Tobacco

WANTED.

At the several collieries of the Dominion coal co. Limited, skilled coal miners and mine laborers.

Apply on the works Or by letter

Dominion Coal Company, Ltd

THE GARLOCK PACKING CO.

Sole



Manufacturers.

GARLOCK'S STEAM, WATER and AMMONIA
—PACKINGS.—
ASBESTOS SECTIONAL COVERINGS.

Hamilton, Ontario.

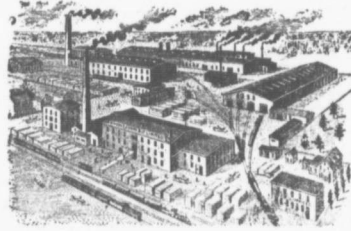
Used by Collieries in Lancashire, Staffordshire & Yorkshire

'XTERRA' COLLIERY LAMP OIL.

For Marmut, Muscel Deflector or Closed

PURE WHITE FLAME LOW PRICE
E WOLASTON, Dutton St MANCHESTER

Sole Representatives for Canada, AUSTEN BROS.,
Halifax, N. S.



—MANUFACTURERS OF—

RAILWAY
STREET and
MINING

CARS,

CAR WHEELS Church Pews,
FORGINGS & Fittings for Stores, Schools, & CASTINGS A SPECIALTY.

Large Stocks of Foreign and Domestic Lumber on Sale.

Rhodes, BUILDING MATERIALS
Curry & co., Ltd. GENERAL

Branch ROBIE STREET, AMHERST, N. S.
HALIFAX, N. S.

INTERCOLONIAL RAILWAY

On and after Sunday, June 24th, 1906 trains run daily, Sunday excepted, as follows:—

—TRAINS LEAVE STELLARTON—

No 144 Mixed for Hopewell	5.55
No 79 Mixed for Trenton	6.30
78 Mixed for Hopewell	6.58
18 Express for Halifax, and St. John	7.40
21 Mixed for Pictou Landing	7.45
62 Mixed for Pictou	8.15
50 Mixed for Mulgrave	8.55
19 Express for Sydney	10.55
28 Mixed for Pictou	11.00
56 Mixed for Truro	13.35
84 Express for Sydney	13.50
30 Express for Halifax and Montreal	16.15
140 Mixed for Pictou	16.05
101 Mixed for Pictou Landing	16.50
22 Mixed for Hopewell	18.10
60 Mixed for New Glasgow	19.40
80 Express Halifax and St. John	19.45
17 Express for New Glasgow	21.15
66 Express for Pictou	21.15

—TRAINS ARRIVE AT STELLARTON

79 Mixed from Hopewell	6.30
78 Mixed from Trenton	6.55
61 Express from Pictou	7.30
18 Express from New Glasgow	7.55
21 Mixed from Hopewell	7.55
55 Mixed from Truro	8.00
28 Mixed from New Glasgow	10.40
27 Mixed from Pictou	10.45
56 Mixed from Mulgrave	11.15
19 Express from Halifax and St. John	11.45
139 Mixed from Pictou	11.55
83 Express from Halifax, St. John, Quebec	13.40
93 Express from Sydney	15.50
22 Mixed from Pictou Landing	18.10
77 Mixed from Hopewell	18.45
65 Express from Pictou	19.30
80 Express from Sydney	19.55
50 Express from New Glasgow	21.05
17 Express from St. John and Halifax	21.10

All trains are run by Atlantic Standard Time Twenty four o'clock is mid-night. Moncton, N. B. June 23rd, 1906