

The Thomas Organ and Piano Co., Woodstock, Ont., inform us that they have just forwarded a very large organ built by them for the new English Church, to be called the Cathedral, at Christchurch, New Zealand. As this company have sent quite a number of their instruments to Australia, they think, with good reason, that if proper means are employed, Canadian manufacturers ought to obtain a good share of the trade in that line in competition with other countries.

The Thomas Organ and Piano Co., Woodstock, Ont., have just added to the equipment of their works a new double planer, made for them by Major Harper, Whitby, Ont., and several other machines, and have added another lumber drying kiln. The company inform us that their factory is being worked to its fullest capacity to meet the demand for Thomas organs.

Messrs. Edward Jefferson & Bro., 28 Strawberry street, Philadelphia, have sent us a catalogue having reference to the second-hand woolen and worsted machinery which they are offering for sale. Included in the list is one complete worsted spinning mill, one complete mill for making clay worsteds, etc., one for making men's wear, one for making fancy curtains, and one complete Brussels carpet plant, consisting of 112 looms and accessory machinery. The catalogue describes this machinery in detail, and also makes reference to a great deal of other similar machinery, full particulars of which will be sent on application.

The Fairbanks Company, Montreal, have sent us a circular having reference to the Chatillon Balances manufactured by them, and which have just been admitted to veri-

fication in Canada by the Department of Inland Revenue. It is claimed for these balances that they are the best of this description made, and that they are the only ones of this class admitted into Canada. The Government requirement is that no balance of any capacity, whatever shall have an error exceeding one ounce of its maximum capacity. The Chatillon balance has successfully passed the ordeal of the severe tests required, and are to be placed upon the Canadian market by the Fairbanks Company of Montreal, who already have a large number of orders for the article. Agents are wanted for the sale of it.

The Fairbanks Company, Montreal, have sent us samples of the vulcabeston sheet packing, vulcabeston braided round packing, and vulcabeston pressed rope gaskets, which they are offering to Canadian steam users. Vulcabeston is asbestos in combination with waterproofing and vulcanizing material. It is furnished in sheets, in round braided packing, in pressed rope gaskets, and in moulded gaskets, and is used for valve stem packing, steam joint packing, handhole and manhole gaskets. Vulcabeston sheet packing is a superior steam joint packing on account of its permanent resistance to heat. It is not liable to injury by acids, gases, etc.; it will not shrink or absorb moisture, and is invaluable for a number of purposes. Vulcabeston braided round packing is a flexible round packing composed of strong twisted strands of pure asbestos, braided, and combined with waterproofing material, vulcanized and coated with plumbago. It is an excellent packing for high pressure steam, hot water, oil, acid and ammonia; also for locomotives, stationary and marine engine throttle valves. It is

self lubricating, and will not shrink, pulp or blow out. Vulcabeston pressed rope gaskets are made from vulcabeston round packing. For use on handhole and manhole plates, flanged steam joints, etc. For further information and samples enquire of the Fairbanks Company.

The Bannockburn Mine have just placed an order with the James Cooper Mfg. Co., Limited, for a hoisting and pumping plant consisting of a thirty h.p. Lidgerwood hoisting engine with necessary boiler, pump, etc.

The Hall Mines, Limited, Nelson, B.C., are re-equipping their tramway line with a complete new set of buckets, and have placed order with James D. Sword, of the James Cooper Mfg. Co., Limited, for \$10 buckets. Delivery is to be made within eight weeks.

The Waterous Engine Works Co., Brantford, Ont., through their Winnipeg, Manitoba branch, has furnished Peter McArthur with the machinery for his mill at Lake Winnipegosis, Man.

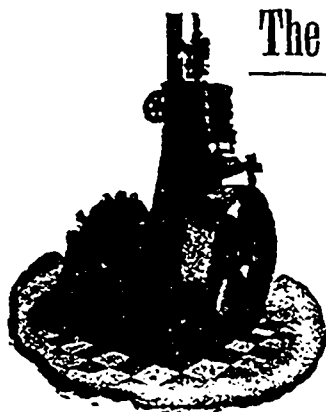
Mr. David Richard's sawmill and lumber yard at Campbellton, N.B., was burned July 18th. Loss about \$18,000.

A shingle mill is being built at Sackville, N.B., by Senator Poirier.

John Whitesides is erecting a shingle mill at Huntsville, Ont.

The new iron tank erected at Cardinal, Ont., by the Edwardsburg Starch Co., is nearing completion. It is 40 feet high and is mounted on four iron legs 65 feet long and strongly braced. It has a capacity of 90,000 gallons and will contain the water supply of the town.

Adam Beck, London, Ont., has started a cigar-box factory at Montreal.



Manufactured by.....

The Whitelaw-Shepherd

...ENGINE...

SIMPLICITY, COMPACTNESS,
PERFECT REGULATION,
ECONOMY,
AUTOMATIC LUBRICATION.

For Electric Lighting Mills, Factories,
and other purposes where Economy,
close regulation and enduring service
is required.

R. WHITELAW, Woodstock, Ont.

The ELECTRICAL CONSTRUCTION CO.

OF LONDON (Limited).

MULTIPOLAR MOTORS and DYNAMOS

— AND —

DIRECT CONNECTED PLANTS FOR
ISOLATED LIGHTING.

Repair Work a Specialty.

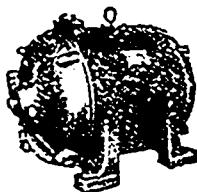
HEAD OFFICE AND FACTORY:

No. 90 YORK STREET, LONDON, CANADA.

760 Main Street, WINNIPEG.

42 York Street. TORONTO.

Our Products are the Standard of Quality.



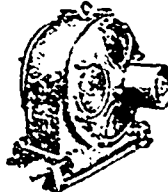
Direct
Current
Dust Proof
Motor.

Same General
Design as West-
inghouse Multi-
polar Motors.



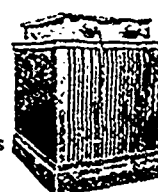
Our
Direct-
Connected
Generators

Are Adopted
by all
Requiring the
BEST



Tesla Poly-
phase In-
duction
Motors.

Type "C."
The Only Motors
Supplying
Niagara Power
in Buffalo.



Self-Cooling
Transformers.
10,000 H.P. in
Buffalo and
Tonawanda
Alone Em-
ployed in the
Utilization of
Niagara
Power.

Westinghouse Electric & Mfg. Co.
Pittsburgh, Pa.

New York, Atlanta, Austin, Boston, Buffalo, Chicago, Cincinnati, Philadelphia, St. Louis, San Francisco, Syracuse, Tacoma, Denver, Mountain Electric Co., Canada, Alcorn & Super, Ottawa, Mexico, G. & O. Brantiff & Co., City of Mexico, Westinghouse Electric Co., Limited, 32 Victoria Street, London.