

# ROYAL EDWARD HOTEL

Queen Street, West, St. Marys.

ADMIRABLY SITUATED FOR THE  
ACCOMMODATION OF ALL TRAVELLERS  
COMING IN ON THE ST. MARYS  
& W. O. R. RAILWAY.

Spacious Sample Rooms.

Bowling Green and River Park  
in Connection.

Heated by Hot Water---  
Numerous Baths.

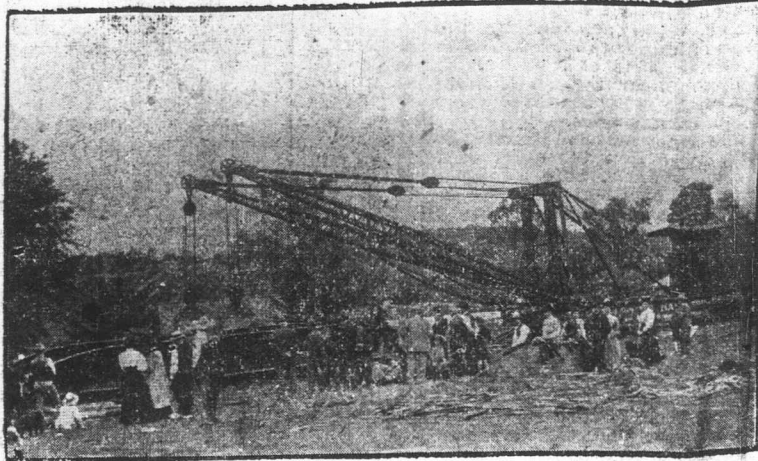
ALL ELECTRICAL  
Conveniences.

Most Modern Improvements.

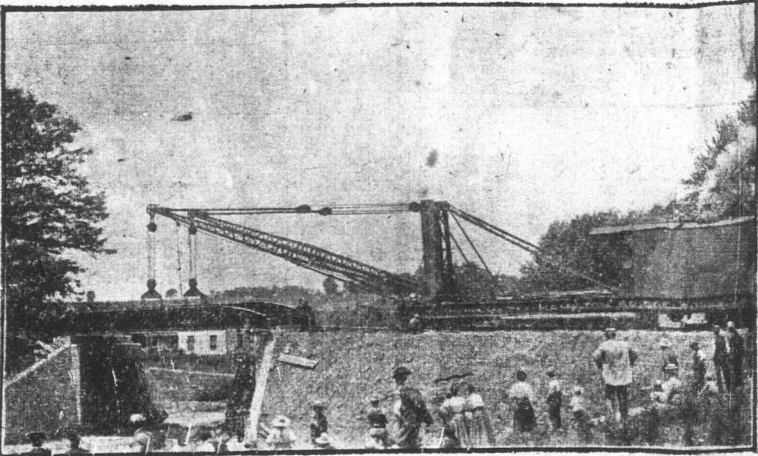
RATES \$1.50 PER DAY.

JAS. A. McLAREN,  
PROPRIETOR.

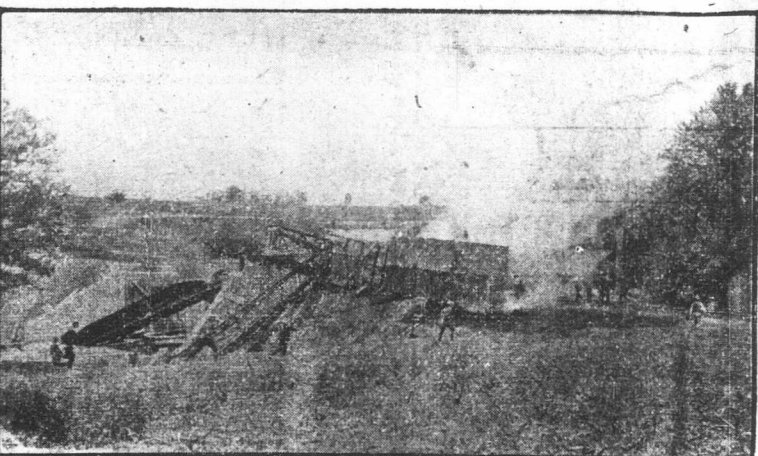
## AN ACCIDENT IN FOUR STAGES.



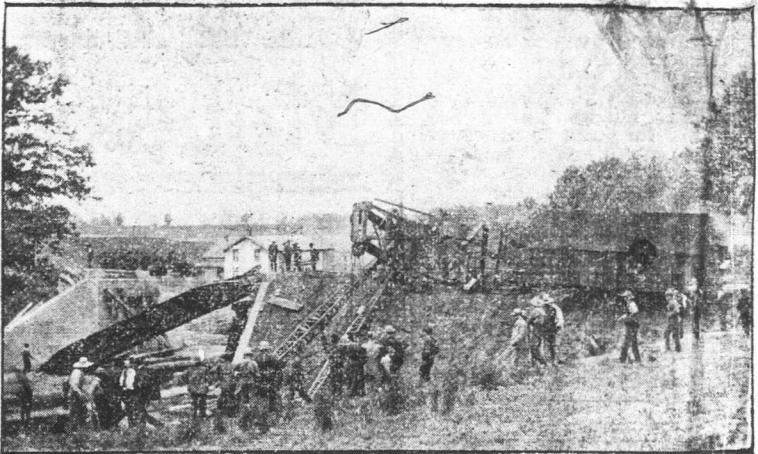
PREPARING TO LIFT IT INTO PLACE.



PLACING IT IN POSITION.



AT TIME OF THE COLLAPSE.



AFTER THE ACCIDENT.

## WHITE'S DISPLAY OF MILLINERY

Splendid Showing of Prevailing  
Modes Viewed by Many  
on Opening Day.

From Sentinel-Review of Sept. 10.

The John White Co.'s establishment presented an unusually attractive and brilliant appearance today, it being the annual Fall and Winter millinery opening. At a very early hour the handsome show rooms were thronged with an animated crowd of women who were lost in admiration of the lovely things gathered from the various marts of the old and new world for the adornment of their kind. The show room had been freshly painted in pure white which made an advantageous background for the brilliant display. Palms and cool green ferns were used lavishly in decorating, while lovely hanging baskets of trailing asparagus fern were suspended from the ceiling and altogether made a charming picture. The millinery department is still in charge of Miss Goodall, whose taste is unquestionable and who has made an individual study of styles and colors best suited to her numerous patrons. The hats were never lovelier and suited to the new style in gowns known as the Directoire. There are Directoire gowns, Directoire suits and Directoire hats. A word as to shape. The hats are extremely large, some with flaring brims, others drooping gracefully over the hair and others rolling becomingly from the face and though large they are so shaped as to fit the head snugly. Of course the coil-pure must be well built out to bring out the style and smartness of the headgear. Among the smaller shapes the turban is a leader. Softly draped toques fitting nicely into the head are also good style. Among the newest hats are the satin covered hats in all shades. There are also heavier felt hats, velvet covered hats with satin facing, and satin covered hats with velvet facing. Another novelty used is

chamois combined with fur, Terry velvet and plush. Furs are also used for entire hats or in combination with other materials. The furs mostly used for this purpose are mink, ermine, black Persian lamb and grey squirrel.

In colors the newest shade is known as Taupe (a sort of soft dark gray or castor shade) which is used in combination with many other shades. There is a wide range of blues, sapphire, delit and a new shade known as gendarme; greens from emerald to olive, cerise, purples and browns, that known as cinnamon brown being the newest. In the trimmings, wings are one of the leading features. They range from tiny ones to those so huge that one wing serves as the entire trimming, and they are certainly very smart and effective. The wings are in two tones and some in numerous tints and shades. A feature of the trimming is the bandeau about the crown, which by the way, is very large. These bandeaus are made of wings, of ostrich, marabout, chenille and taffeta, and the Pocohontas which as the name implies much resembles an Indian head dress. Ostrich ornaments many of the hats; they are long and straight and the finishing touches on others. Ostrich plumes, incurled, long and sweeping are among the choicest and richest of the season's trimmings.

Two tones are frequently used in wings or in materials such as (gold and blue), (green and blue), (taupe and pink), (gendarme and taupe), (burnt orange gendarme and taupe), and other artistic combinations. The buckles which add a smart touch to the hats are large and elaborate in cut steel, oxidized, dull gold, and steel set with jewels.

Among so many handsome hats, it is difficult to particularize. One smart hat was a small turban with band of Persian lamb and crown of white Terry velvet finished with band of gold and two large jet and ostrich, sweeping across the front and fastened with pendant ornament in jet and gold. This hat worn with an ermine set of muff and cross over scarf would be very chic indeed.

Another hat which attracted special notice was of the large sweeping shape with upper brim and soft crown of chamois facing of French velvet in shade of emerald green, a bandeau of mink finished with heavy chamois colored lace and cross cord went round the crown and two huge roses in autumn shades of flame and green and dull metal ornament added the finishing touches to what was a truly artistic creation. There was also a beautiful hat in black which

came in for a great deal of admiration. It was a large black satin shape, round brim, with the Gainsborough order, with large dome crown. Seven beautiful black French ostrich feathers fell over the crown and brim. A touch of color was lent by a soft drape of oriental gold cloth with handsome dull gold buckle set with jewelled insects. With this hat was worn a fancy ring net face veil finished with ruching of same and velvet ribbon bow. For those who admire the black and white combinations there was a charming model in large white satin with black velvet facing. Round the crown was a rich bandeau of jet leaves and pendants on a foundation of white malines and falling over band of black velvet. Beautiful white ostrich feathers finished with three inch velvet ribbon and jet ornaments, came from the back and swept over the crown to the front.

In brown one noticed particularly a large hat with shirred satin facing in cinnamon brown. Two immense and handsome wings in pheasant effect combining shades of topaz, gendarme and taupe constituted the principal trimming. These were fastened with a draped bow of topaz and taupe plush caught with an oxidized buckle. The wings almost entirely covered the entire crown. One might write column after column describing the vast and rich assortment of head gear but while the millinery perhaps is the feature of the day other departments must be visited. Adjoining the millinery department was one devoted specially to furs. This is an entirely new department and is stocked with a large and splendid display of furs. The mink sets were the first to attract our gaze. The sets included muffs in Empire and Book shape, very soft, light and in beautiful dark stripes and lustre. There were long capelines, stoles and scarfs.

One particularly handsome set was a mink cape stole with double satin lined ends falling to the feet, finished at shoulder and back with heads and tails. The muffs of the four striped rug variety was finished with a double row of heads and tails. A new feature in neck pieces is short fur over the suit, to wear with the new collarless fur coat, and the tailored suit. There were handsome sets in black lynx, silver tipped sable fox, white fox, natural coon, Isabella coon and sable coon. Among the cheaper furs were Orenberg mink, mink marmoset, astrakhan, Prairie fox, Kid, and Russian Pony. In white furs one could choose from Foxline, Thibet, white hair and the royal ermine.

Passing from the fur department, one enters the ready made suits and mantle department. Here was the direct display of ready made tailored suits ever shown in the city. They are New York models in the latest cuts, including the Directoire. The coats are lined with satin and smartly finished and well tailored and at very reasonable prices. This department also shows many handsome separate skirts, trimmed with satin bands, with braid and buttons. There are also winter coats for girls and women in cloth of various weaves in both black and colored. They are Directoire, tight fitting and semi-fitting and long. Here too are shown fur coats and fur lined coats. A distinctive feature of this season's model in fur coats was the rather military effect and finished with buttons. The dress making department is in charge of Miss Tolhurst, formerly with Stitt's and she is fully competent to turn out a correctly finished tailored suit, reception and evening gowns and wedding trousseaux.

In the dress goods department there is certainly a wide range from which to choose. There are plain coatings to be worn with check and striped skirtings which also very smart suits. In suitings the rough surfaces seem to strike a new note. There are however, many handsome broadcloths in all shades in which weight very suitable for the Princess and Directoire gowns. These broadcloths are shown in the palest tints to the more medium tones. While this seems distinctly woman's day, still the men have not been overlooked. The men's department has been given its share of attention. Special attention to ordered suits, ready made suits, hats, ties and everything which goes to make up the clothing of the sterner sex. The windows present a very attractive display and are well worth a deliberate study. Every department of the John White Co. seems to have had more than the ordinary attention paid to its needs and requirements.

## CHINA HALL

is headquarters in the district through which the Ontario and Western railway passes, for Fancy China, Earthenware and Glassware. The second storey of our building is devoted to the display of these goods.

### Fancy China Articles

A limited but choice selection of Royal Doulton, Irish Beleck, Crown Derby, Royal Vienna and other high-class wares. Large and beautiful assortment of Cups and Saucers, Plates, Bon-Bons, Salads, Cocoa Jars, etc. in Japanese and German China.

### Dinner Sets

100 pce. German China	\$15.00
100 pce. Gilt and Decorated Semi-Porcelain	\$12.00
97 pce. Printed and Gilt	\$8.00 and \$10.00
78 pce. Printed	\$4.50

### Tea Sets

40 pce. English China	\$5.50
40 pce. German China	\$3.25 up

### Toilet Sets

10 pce. Decorated and Gilt	\$3.50, \$4.00 and \$5.00
10 pce. Printed	\$1.75

### Special Open Stock Patterns

In Elite French Limoges.  
In Meakin's Anjou Semi-Porcelain.

IF ONE ONLY WISHES TO EXPEND A LITTLE  
MONEY AT A TIME THIS IS A GOOD  
WAY TO COLLECT A SET.

**F. W. Hutton,**  
ST. MARYS.

This Coupon entitles the bearer to a discount of 25 per cent. on all Wall Paper bought at The Embro Drug Store during the next two weeks.

**THOS. PORTER,**  
DRUGGIST AND OPTICIAN.  
Eyes Tested Free.

WHY NOT SMOKE

## WOODSTOCK CIGARS

Made by The  
**Woodstock Cigar & Mfg.  
Co., Limited**  
WOODSTOCK, ONT.

For a cool, satisfying smoke there are  
no cigars better than

**Zorra Laddie 10c**  
**and Ula**  
**Tug McIntosh 5c**

A QUARTETTE  
OF BEAUTIES.

No Better Cigar for the Money.  
Ask For Them.



JAS. FORBES, Manager.

## John Willard HOUSE, SIGN AND DECORATIVE PAINTER

Importer and Dealer in

Wall Papers, Paints, Oils, Varnishes,  
Window Glass, Plate Glass, Mirror  
Plates, Artists' Materials, Room  
Mouldings, Window Shades, Curtain  
Poles, Picture Frames, &c.

## Willard's Mixed Paints

Are mixed by WILLARD. He knows how.

## Willard's Glass

is British Glass directly imported.

A complete line of SCHOOL BOOKS  
and STATIONERY always in stock.

**John Willard**  
QUEEN ST. ST. MARYS