

## Business Notes.

## OF INTEREST FROM THE

## EXPORT GAZETTE

## Legislation Passed in

## Australia.

## The Anti-Dumping Bill

## has been passed by the Australian House

## of Representatives and the Senate, it

## is presumed that the Proclamation

## prohibiting German goods from

## the Commonwealth will be

## made. The new Act should more

## fully protect the object in view, for

## the fact that the prohibition has

## been made by the Commonwealth

## has been a source of annoyance

## to the Commonwealth. Indirect

## taxes from Germany have been

## common, so much so that a

## number of Australian steel works

## have themselves unable to compete

## with the under-hand operations, and

## have had to close down unless the

## prohibition had been made. These

## works are also demanding

## that the duty on steel, but on

## the other hand, must be made for

## the purpose of their agitation

## of the importation of all foreign

## goods, whatever their source, being

## in the interests not only

## of the Commonwealth, but of Australia

## it is to be hoped that this por-

## tion of the propaganda will be un-

## successful.

## Zeland's New Customs Tariff.

## On this subject, we may re-

## fer to the New Zealand Tariff

## which is to be in force on the 1st

## of February. It is to be con-

## sidered on the 1st of February

## which is to be in force on the 1st

## of February. It is to be con-

## sidered on the 1st of February

## which is to be in force on the 1st

## of February. It is to be con-

## sidered on the 1st of February

## which is to be in force on the 1st

## of February. It is to be con-

## sidered on the 1st of February

## which is to be in force on the 1st

## of February. It is to be con-

## sidered on the 1st of February

## which is to be in force on the 1st

## of February. It is to be con-

## sidered on the 1st of February

## which is to be in force on the 1st

## of February. It is to be con-

## sidered on the 1st of February

## which is to be in force on the 1st

## of February. It is to be con-

## sidered on the 1st of February

## which is to be in force on the 1st

## of February. It is to be con-

## sidered on the 1st of February

## which is to be in force on the 1st

## of February. It is to be con-

## LIGHTENED PRICES TO LESSEN EXPENDITURE

and Stimulate Enthusiasm and Interest  
at this Popular Store

## VALUES ENORMOUSLY GOOD

Opportunities are many for the thrifty this week-end, as we have produced some rare values for your consideration; and not alone are these offerings for immediate requirements, but you will find many others offering you better value than you would expect to find later on. Make it a point to attend these Week-End Sales this winter, you will find some unusual values to interest you.

Single  
Grey  
BlanketsHeavy Grey Wool Blankets; splen-  
did for go-between blankets, as they  
have that real heavy warm appear-  
ance; English manufacture. Regular  
\$6.50 each. Friday, Satur-  
day and Monday ..... \$3.80Children's  
Winter  
CoatsA snap in Children's Winter Coats; some in  
cloth, others in Tweed; velvet collar, belt and  
cuffs; snug looking Coats for girls from 3 to 6  
years. Reg. \$6.50. Friday, Saturday ..... \$3.75  
and Monday .....Misses' Flannel  
MIDDIES  
4 only to ClearSmart becoming Wool Flannel Middies in shades  
of Crimson, Grey and Fawn; sailor collar and  
pocket trimmed with soutache braid, black silk  
lining, long sleeves. Reg. \$8.00. Fri-  
day, Saturday and Monday ..... \$4.98

## Paring Down Prices

ON  
Flannelettes, Scotch WinceyWHITE FLANNELETES—  
Soft fluffy White American  
Flannelettes for every use;  
a line that offers you value  
above the ordinary today.  
Friday, Saturday & 23c.  
Monday, yard ..... 23c.  
SCOTCH WINCEY—40 inch  
Cream Scotch Wincey;  
washes beautifully and  
gives most satisfactory  
wear for Nightdresses,  
Waists, Top Shirts, etc.  
Reg. \$1.00 yard. Friday,  
Saturday and Monday ..... 78c.STRIPED FLANNELETES  
—These came to us in long  
remnants; pieces range  
from 10 yards up; we will  
cut you any required  
length. Friday, Saturday &  
Monday, the yard 26c.EVEN CLOTHS—Extra fine  
flannelette finish; shades of  
Grey, Pink and Light Blue;  
useful for Rompers, Child-  
ren's Overall or Boys' Top  
Shirts. Regular 55c. yard.  
Friday, Saturday & 33c.  
Monday ..... 33c.WHITE TOWELING—20 inch  
White Turkish Toweling;  
this is a particularly fine  
one and unusually wide.  
Reg. 35c. yard. Fri-  
day, Sat. and Monday ..... 23c.ROLLER TOWELING—16  
inch strong Linen  
Towelings, crimson striped  
border. Regular 55c. Fri-  
day, Saturday and Mon-  
day ..... 35c.MADAPOLAM—34 inch Soft  
White Madapolam, for mak-  
ing up fine underthings for  
summer wear. See this  
line. Special Friday, Satur-  
day and Monday, 35c.  
yard .....RUBBER SHEETING—52  
inch White Rubber Sheet-  
ing, reversible; extra good  
quality. Reg. \$3.00 yard.  
Friday, Saturday and  
Monday ..... \$2.75PLAID FLANNELETES—  
Dark and medium shades  
of Shepherd's checks; nice  
for Bloomers or Infants'  
Dresses. Reg. 55c. yard.  
Friday, Saturday & 30c.  
Monday .....

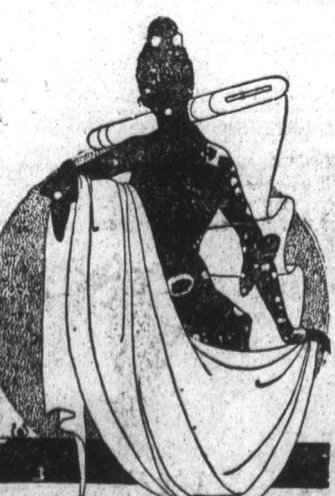
## SHOWROOM ALLUREMENTS. Men's 'Nansen' Caps

Important Values for the Saving-Wise

## GINGHAM OVERALLS.

Ladies' and Misses' Blue and White  
Striped Gingham Overalls, lace edged trim-  
ming and pocket; made in full fitting sizes.  
Friday, Saturday and Monday ..... 78c.INFANTS' WOOL OVERALLS.  
Cream All Wool Knitted Overalls; made  
to cover the feet as well; assorted sizes.  
Reg. \$1.00. Friday, Saturday & \$1.35  
Monday .....FLANNELETTE  
EMBROIDERY.  
White and Pink Embroidery, insertion  
bordering in fine flannelette make; 2 inches  
wide; assorted patterns. Regular 8c. yard.  
Friday, Saturday and 2 yards for 10c.  
Monday .....LADIES' UNDERWEAR.  
Fine White Jersey Vests and Pants; the  
Vests high neck and long sleeves. Pants  
ankle length; open; sizes 36 and 38. Reg.  
\$1.50 garment. Friday, Saturday ..... \$1.34  
and Monday .....

## LINGERIE TAPE.

In Sky shade only; carded 3 yard lengths,  
with needle. Friday, Saturday and 8c.  
Monday, card .....LADIES' BLOOMERS.  
Cream Jersey Bloomers, with elastic at  
waist and knee; made in full sizes. Reg.  
\$1.20. Friday, Saturday and Mon-  
day ..... 98c.CHILDREN'S BLOOMERS.  
Warm comfortable Grey Jersey Bloom-  
ers, with elastic at waist and knee; winter  
weight; to fit 10 to 12 years. Fri-  
day, Saturday and Monday ..... \$1.29HAT ORNAMENTS.  
Wool make imitation Fruit and Foliage in  
assorted shades. Reg. 25c. bunch.  
Friday, Saturday and Monday ..... 9c.CHILDREN'S BONNETS.  
Wool make imitation Fruit and Foliage in  
assorted shades. Reg. 25c. bunch.  
Friday, Saturday and Monday ..... \$1.98LADIES' WOOL  
JUMPERSVery suitable for skating or curling; pretty styles, with and without collar or  
griddle; V neck and pockets; a jumper for any time of the year; pretty mixed shades  
Dark and White, Rose and Sage, Rose and Buff, Sage and Fawn, American  
Beauty and others. Reg. \$18.00. Friday, Saturday and Monday ..... \$9.75LOOK AT THESE  
New Values from the DRESS  
GOODS SECTIONDRESS TWEEDS—Several pieces of serviceable  
Dress Tweeds, 54 inches wide; medium and  
dark mixtures; ideal for winter make-up, such  
as skating skirts or costumes, or children's  
coats. Reg. \$5.50. Friday, Saturday ..... \$3.48  
and Monday .....BROAD CLOTHS—54 inch English and American  
Broad Cloths, excellent weight; shades of Navy,  
Amethyst, Brown, Myrtle, Grey and Black; of-  
fering superior value. Reg. \$7.50. Fri-  
day, Saturday and Monday ..... \$4.48NAVY DRESS SERGE—54 inch Navy Dress  
Serge. These offer very special value to-day  
by reason of our re-marking every piece; from  
reputable English makers, warranted fast  
dye. See their new price for Fri-  
day, Saturday and Monday, the yard ..... \$1.98DRESS GOODS REMNANTS—Hundreds of them,  
and in all required shades and lengths; suit-  
able pieces for skirts, waists, children's wear,  
coats or costumes; their former remnant prices  
still further lowered for immediate clearance.  
COME AND SELECT YOUR CHOICE.James Baird  
LIMITEDCurlers  
Jackets

HALF PRICE

These are about the warmest Jackets a man  
could wear; beautifully made and finished; mol-  
tied shade, warm wool lining, V neck. They  
were \$10.00. Friday, Saturday & Mon-  
day ..... \$5.00regard to some of the other islands to  
which Mr. Wood is proceeding—An-  
tigua, Barbados, Grenada, etc.

## British Capital Firm Developing Peru

No more important concession has  
been granted by Peru than that ob-  
tained by the British Canadian Syn-  
dicate. In return for the expenditure  
of \$213,000,000 in the construction of  
railways, harbour works and termi-  
nals, the materials, as the rolling  
stock, are to be purchased in Great  
Britain; the labour, estimated at about  
10,000 workmen, to be drawn from  
England, and British shipping is to  
have preference in conveying the ma-  
terials for the work and supplies for  
the workmen. Beyond this a return  
freight is assured of sugar, cotton,  
ores, and other raw material. A fur-  
ther detail of the concession is that to  
all workmen employ in carrying  
through the scheme, whether skill-  
ed or unskilled, it is intended to give 100  
series of land, of which they will hold  
the service rights in perpetuity. If  
any number of the workmen take ad-  
vantage of the last item in the conces-  
sion, the gain to Peru is economic de-  
velopment should be considerable,  
while a further and permanent com-  
mercial link with Great Britain would  
be created.

## Motor Notes.

Motor cars to the number of 22,222  
were imported into India during the  
year 1920-21, the U.S.A. supplying  
10,120 and Great Britain 2,541. The  
average price of the British cars im-  
ported was \$240, as compared with  
the American average of \$245.As a measure of road construction,  
it is proposed to prohibit the impor-  
tation into Jamaica of motor lorries  
weighing more than 12,000 lbs. gross  
when loaded. The Government have  
already appealed to importers not to  
purchase vehicles exceeding, unladen,  
a weight of 6,000 lbs.The U.S.A. Department of Com-  
merce is despatching a Special Com-  
missioner this month to investigate  
the world's markets for motor  
vehicles, his first objectives being  
Japan and the Far East.

## From Europe to Africa by Train?

We note that the old project of con-  
structing a tunnel from Europe to  
Africa by way of the Straits of Gib-  
ralter is again revived. The gain to  
commerce of a thorough train service  
from, say, Paris to Tangier, and sub-  
sequently—who knows?—to Cape  
Town and Algeria, Tunis, and Egypt,  
or, alternatively, via the West Coast,  
cannot be questioned. But we doubt  
whether the scheme, possible as it is  
to modern engineering skill, will be  
realized within the present generation.  
Canada's Carrying Trade Development.

## Miscellaneous Notes.

We are informed that the additional  
Canadian duty of 10 p.c. leviable on  
imports not marked with the country  
of origin will not apply to goods or-  
dered before October 1st, 1921, and im-  
ported before July 1st next. Importers  
will, however, be compelled to mark  
such goods before they leave the Custom-  
house.The General Manager of the Cana-  
dian Bank of Commerce, Sir John  
Aird, emphasizes the increase in the  
Dominion's export trade with Ger-  
many, which reached a value of ap-  
proximately £1,900,000 during the  
year ending September last.The Oversea Shipping Association,  
Melbourne, Australia, announced last  
month a 10 p.c. freight reduction by  
both Conference and Commonwealth  
lines to Great Britain, Continental  
and Mediterranean ports.Canada's imports during the April-  
September period of last year amount-  
ed approximately to \$56,000,000, as  
compared with \$160,000,000 during  
the corresponding six months of 1920.  
Investigations into the possibility of  
newsprint manufacture in Argentina  
have been set on foot by the Repub-  
lic's Ministry of Agriculture, with  
whom we suggest exporters of ma-  
chinery for this industry should keep  
in close touch.Proposed public works development  
in Ceylon involves expenditure of  
£6,000,000, and will include water sup-  
ply and drainage improvement in  
Colombo, and considerable railway  
construction throughout the country.  
Jamaica's new Customs tariff propo-  
sals involve a duty of 15 p.c. ad val.  
on British manufactures, and 20 p.c.  
on goods of foreign origin, while  
British cottons are to be accorded a  
preference of 50 p.c.The Canadian Pacific Railway Co. is  
establishing a new service between  
Quebec and Southampton, via Havre,  
during the summer of 1922.A Commercial Agreement renew-  
able after one year has been signed  
between Germany and Portugal.  
The importation of immature  
brandy, whisky and rum into Fiji is  
prohibited.The Dominion's Increasing Trade  
With Germany.  
By the way, Canada's trade with  
Germany is rapidly developing. Before  
the war it was the other way round.  
Then Germany exported to Canada,  
and the Dominion had little to offer in  
exchange. Now the position is re-  
versed. During the 12 months ended  
September last Canada exported to  
Germany to the extent of \$9,292,000,  
and imported from that country to the  
amount of \$2,912,300, a balance in the  
Dominion's favour, therefore, of \$6,  
380,000. Dyes appear to be among  
Canada's chief purchases from the  
Republic.White and Cream  
Curtains and  
CurtainingsValues worth your  
considerationSCRIM CURTAINS—32 pairs of  
very neat looking White Scrim  
Curtains, showing wide hem-  
stitched border and edged with a  
silk Torchon Lace; very attrac-  
tive looking. Reg. \$3.75 pair.  
Friday, Saturday and  
Monday ..... \$2.89WHITE SCRIMS—Real fine plain White Scrims, with hem-  
stitched self-border; something uncommon looking  
about these. Reg. 55c. yard. Friday, Saturday  
and Monday ..... 49c.HUCK TOWELS—Sensible hard wearing American Huck  
Towels, for face and hands or for everyday use in the  
kitchen; serviceable Towels for boarding houses or ho-  
tels. Were 48c. each. Friday, Saturday and  
Monday ..... 25c.CREAM LACE CURTAINS—36 pairs of our regular \$4.00  
pair Cream Lace Curtains in two and a half yard  
size. To clear Friday, Saturday and Mon-  
day ..... \$2.79KITCHEN TOWELS—Good wearing white herring-bone  
Twill Kitchen Toweling, for roller or dish cloth.  
Regular 45c. yard. Friday, Saturday & Mon-  
day ..... 30c.GLASS TOWELS—40 inch Glass Toweling, fine check-  
ed make; soft finish. Reg. 60c. yard. Friday,  
Saturday and Monday ..... 34c.TURKISH TOWELS—An assortment of Turkish Towels,  
with assorted coloured stripes;  
medium size. Special Friday, Saturday and  
Monday ..... 49c.FRENCH SCHEMERS—White  
Schemers; makes a very neat hanging for bedroom or  
bathroom windows. Were 85c. yard. Friday,  
Saturday and Monday ..... 28c.