

The Guide is the only paper in Canada that is absolutely owned and controlled by the organized farmers. It is entirely independent, and not one dollar of political, capitalistic or Special Interest money is invested in it. All opinions expressed in The Guide are with the aim to make Canada a better country and to bring forward the day when "Equal Rights to All and Special Privileges to None" shall prevail.

Subscriptions to any part of the British Empire, \$1.00 per year; two years, \$1.50; three years, \$2.00; five years, \$3.00, in advance. Foreign subscriptions, \$1.50 per year in advance. Single copies 5 cents.

Send money by express, post office or bank money order. We cannot accept responsibility for money sent loosely in a letter.

**BETTER FARMING TRAINS**

The Manitoba Better Farming Demonstration Specials are past the experimental stage and the Manitoba farmer has been quick to take advantage of the opportunity afforded him by the department. They will be sent out over the lines of the Canadian Pacific Railway and the Canadian Northern Railway again this year, starting about June 3. Each will travel steadily for three weeks, and in that time will cover nearly every point in the province. Posters announcing the exact date and time of arrival will be distributed in each locality. The Canadian Pacific Special will devote particular attention this year to the demonstration of farm mechanics and to exhibits; the Canadian Northern Special will carry lecture features and a special dairy car.

The demonstration in farm mechanics which will be made at each stop on the C.P.R. will arouse the keenest interest among up-to-date farmers. The use of concrete and engine work of all kinds will be dealt with and all manner of home conveniences seen in practical operation. Thus washing machines and churns will be running, farm-water supply will be demonstrated, etc. Foundation work, building floors, etc., will alone sufficiently reward some farmers for the trip to the station. Models of farm buildings will be carried in the car devoted to farm mechanics, so that the illustration of all features of this work will be clearly understood. The boy with a mechanical turn of mind will find himself absorbed by the baby gasoline engines in operation. How electric light can be produced for the house is another feature that will command attention.

The Poultry exhibit, in charge of Professor Herner, of the Agricultural College staff, is bound to prove of particular value in view of the importance of this industry to the rural population of Manitoba. There will be models of poultry houses, incubators, brooders, feeding and fattening crates, shaping boards, etc., and samples of the proper mixed feeds. Everything pertaining to profit-taking in poultry raising will be simply and clearly shown. Professor Herner will give a demonstration of killing and dressing poultry for market at every stop the train makes.

The Animal Husbandry department is preparing to make a special exposition of hog-raising and will have two representatives of six different breeds of hogs for practical demonstration purposes. There will also be samples of feeds and charts showing various feed values. Emphasis will be laid by the Field Husbandry department upon barley growing for animal feed and weed destruction. Various rotations will be explained together with the methods of cultivation for all manner of crops suitable to Manitoba. Samples of weeds, grains, fodders, etc., will fit up the car. How to grow a crop of barley and eradicate weeds at the same time and how to convert barley into prime-bacon will prove profitable subjects for discussion.

A car will be devoted to Home Economics on each train and the women of the family will find it a centre of attraction. Exhibits of sewing, dress-making and house-furnishing will afford many a valuable hint and profitable discussion of farm problems which present themselves to the feminine side of the household will take place. On the Canadian Northern Special many features already enumerated will be duplicated. There will be a lecture on poultry and daily lectures on crop rotations and cultivation. The Animal Hus-

# The Grain Growers' Guide

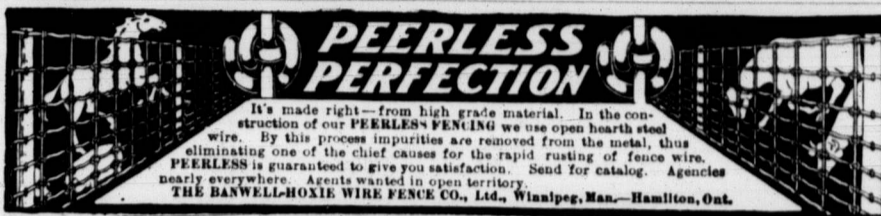
GEORGE F. CHIPMAN, Editor. JOHN W. WARD, Associate Editor.

Published under the auspices and employed as the Official Organ of the Manitoba Grain Growers' Association, the Saskatchewan Grain Growers' Association, and the United Farmers of Alberta.

The Guide is designed to give uncolored news from the world of thought and action and honest opinions thereon, with the object of aiding our people to form correct views upon economic, social and moral questions, so that the growth of society may continually be in the direction of more equitable, kinder and wiser relations between its members, resulting in the widest possible increase and diffusion of material prosperity, intellectual development, right living, health and happiness.

Published every Wednesday at Winnipeg, Canada. Authorized by the Postmaster-General, Ottawa, Canada, for transmission as second class mail matter.

Volume VI. May 21st, 1913 Number 21



**PEERLESS PERFECTION**  
It's made right—from high grade material. In the construction of our PEERLESS FENCING we use open hearth steel wire. By this process impurities are removed from the metal, thus eliminating one of the chief causes for the rapid rusting of fence wire. PEERLESS is guaranteed to give you satisfaction. Send for catalog. Agencies nearly everywhere. Agents wanted in open territory.  
THE DANWELL-HOXIE WIRE FENCE CO., Ltd., Winnipeg, Man.—Hamilton, Ont.

## THE "EAGLE" STEEL SCRUB CUTTER

BUILT IN THREE SIZES  
No. 1 cuts 4 ft. Swath, for use with 4 to 6 Horses  
No. 2 " 5½ ft. " " " Tractor of 20-25 H.P.  
No. 3 " 6½ ft. " " " the Heaviest Tractor

The best solution of the problem of cleaning scrub land in a cheap, rapid and satisfactory manner, saving at least 75 per cent. of the cost of hand-labor.

WRITE FOR DESCRIPTIVE BOOKLET

THE EAGLE MANUFACTURING CO. LIMITED, DAUPHIN, MAN.

# SHARPLES MECHANICAL MILKER

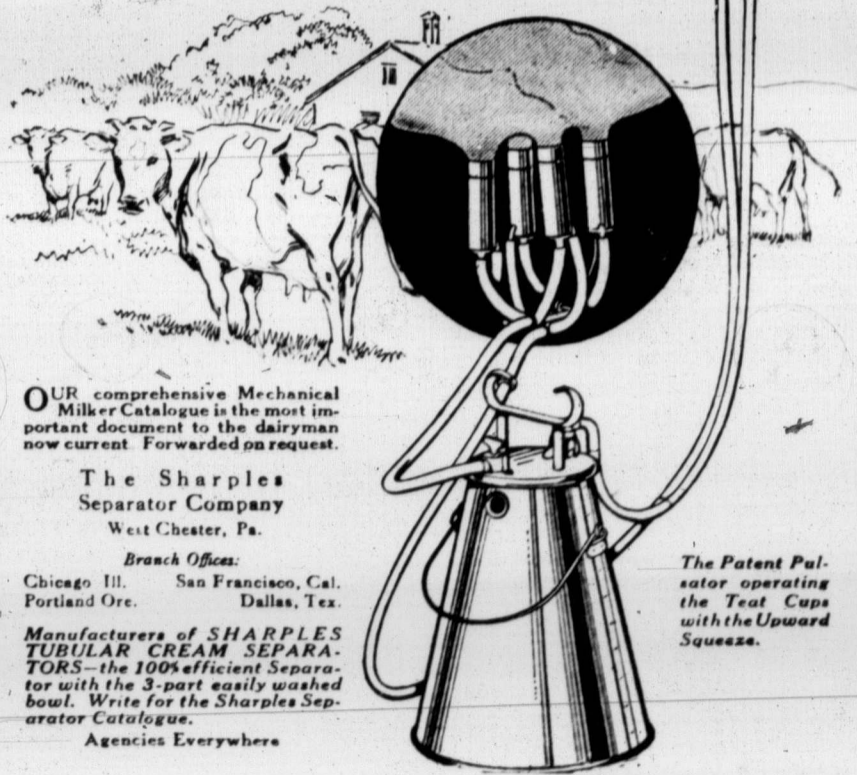
**T**HIS equipment is revolutionizing modern dairy operation. During the four years since its perfection it has been installed with unqualified success in hundreds of the leading dairies throughout America and abroad.

The distinctive features of the SHARPLES MILKER, to which its complete success is due, are the Teat Cups with the Upward Squeeze and the Patent Pulsator operating them. This device reproduces nature's own method of milk extraction, which the most skillful hand-milking cannot do.

The cows are more contented. The teats and udder become far better conditioned. The milk product is absolutely uncontaminated—pure and more valuable. Labor cut to one third.

**Sharples Mechanical Milking means the end of all drudgery of milking.**

Practically every dairyman can visit installations of SHARPLES MILKERS within easy distance, where the actual operation of this equipment can be observed under conditions approximating his own. We shall be pleased to hear from dairymen with a view to their making such inspections.



OUR comprehensive Mechanical Milker Catalogue is the most important document to the dairyman now current. Forwarded on request.

The Sharples Separator Company  
West Chester, Pa.

Branch Offices:

Chicago Ill. San Francisco, Cal.  
Portland Ore. Dallas, Tex.

Manufacturers of SHARPLES TUBULAR CREAM SEPARATORS—the 100% efficient Separator with the 3-part easily washed bowl. Write for the Sharples Separator Catalogue.

Agencies Everywhere

The Patent Pulsator operating the Teat Cups with the Upward Squeeze.

We believe, through careful inquiry, that every advertisement in The Guide is signed by trustworthy persons. We will take it as a favor if any of our readers will advise us promptly should they have reason to question the reliability of any person or firm who advertises in The Guide. We do not knowingly accept the advertisements of frauds, get-rich-quick-schemes, doubtful investments, or anything classed by us as "undesirable."

We publish no free "boosters," and all advertising matter is plainly marked as such.

Rates for classified advertisements may be seen on the classified page. Display rates may be had on application.

Change of advertising copy and new matter must reach us seven days in advance of publication to ensure insertion.

bandry Department will carry representatives of the different types of farm horses, dairy and beef cattle, etc., which will be the subject of valuable lectures at each place. An added feature on the Canadian Northern train will be a dairy car, which will be made exceptionally attractive and interesting.

Many features about the manner in which these Demonstration Specials are conducted must appeal to the practical and busy farmer. Everything is so arranged as to run without a hitch. No time is lost on the arrival of the train, which travels on regular schedule. The professors and assistant lecturers obtain their meals between stops, so that their full time is at the disposal of the farmers assembled. Many questions on the various subjects in hand are asked and answered; so that the individual farmer has a splendid opportunity of applying the instruction to his individual needs and goes home with expert opinions which are worth money and with a quickened interest in his work. Farmers are urged to keep their eyes open for the posters announcing the exact date and time of arrival at the nearest point of call and to lay plans to be present when the Better Farming Demonstration Special pulls in. Last year many farmers took their family picnic-baskets with them and many a merry party was the result. In fact, the arrival of this year's Demonstration Special on either railway line will provide a grand opportunity for an outing. Every farmer will do well to plan for his whole family to be present on the occasion as there will be much to interest every member—wife, daughters, sons, and even the small children. He will meet his neighbors for miles around, have an opportunity of doing some shopping and altogether spend a very happy and profitable day. Everything is free. Everybody is made welcome.

**WINNIPEG EXHIBITION ENTRIES**

By numerous means the country at large has been benefited by the Winnipeg Exhibition, to the greatest extent perhaps in attracting famous animals. This importation of high-class breeds and the resultant splendid type of stock raised through the West is attributable to a large extent to the encouragement given to owners and breeders to show their animals at this the greatest exhibition of the West. As each year goes by the quality and quantity of the live stock shown is increasing. This year the animals in all classes—a large majority of the best of which are bred here in the West—will stand well in comparison with those shown at the largest fairs in the East and to the South, and the officials are looking for a record entry list. The closing date for entries this year is June 21, but the officials are urging that all who are able should forward them before that date in order to save, as far as possible, the rush at the last moment.

**SPENCER ELECTED**

Medicine Hat, Alta., May 18.—Judge Carpenter completed the recount of ballots cast in the election between Hon. C. R. Mitchell and Mayor Spencer has 29 more votes than his opponent. As Returning Officer Dundon had declared Mr. Mitchell elected by 8 votes the recount means a gain of 28 for Mayor Spencer. Most of the gains were made in ballots that had been disallowed as improperly marked by deputy returning officers and were allowed as good by the judge. The judge found no evidence of ballot switching or pencil marking, and the difference was between his opinion of good votes and those of the deputies.