



There's No Time Like The Present

Did it ever really occur to you that none of us have a "lease on life" and that the only way to attain the big things is to take advantage of every opportunity with the least possible delay.

It is said that "Opportunity Knocks but once at Every Man's Door." But we're not selling "opportunities." We're selling labor savers and money makers, our

B-L-K Mechanical Milker

AND

"Simplex" Link Blade Cream Separator

And if you are not already the owner of either or both of these machines, therein lies the opportunity for an increased output of better dairy products, higher prices and less labor.

What they are doing for others they will also do for you.

Read in previous advertisements what some of our satisfied patrons have to say. Then write us for literature.

D. Derbyshire Co., Ltd.

Head Office and Works: BROCKVILLE, ONT.

Branches: PETERBOROUGH, ONT., MONTREAL and QUEBEC, P.Q.

WE WANT AGENTS IN A FEW UNREPRESENTED DISTRICTS



Ontario Provincial Winter Fair at Guelph

Although a War-Time Fair Its Success Was Unqualified

"AGRICULTURE," quoth the Hon. Martin Burrell, in officially opening the Winter Fair at Guelph last week, "is the most peaceful and generally the industry least associated with war during times of peace, but when that period changes to one of strife agriculture is the foundation on which the chances of success depend." The fair opened by the Honorable Minister offered the best possible evidence of the strength and virility of the most important branch of agriculture in Ontario. Last year, with the war in its early stages the Winter Fair was a great success. This year with war still raging even higher standards were established for both quantity and quality of exhibits. The following figures giving a comparison of the total entries in 1914 and 1915 tell their own story:

	1915.	1914	Increase.
Horses	866	287	79
Cattle	899	273	126
Sheep	807	662	*55
Poultry	418	254	159
Seeds	392	836	*4
Poultry	5,644	4,619	1,025
Total	7,861	6,231	1,820

*Decrease.
Ontario Stockmen and the management of the Fair may well congratulate themselves on these figures. They indicate that as a Fat Stock Show Guelph will compare favorably with any other on the continent, as a horse show it is right in the front ranks with our largest fall exhibitions and as a poultry show it is in a class by itself. There were 500 more poultry entries at Guelph than at the World's Fair at San Francisco and over 1,000 more than at the great show at Madison Square Gardens, New York. And Ontario farmers supported their great show. There were 8,000 of them there the first day, a record crowd; 12,000 the second day, also a record crowd; and still more the third day. As a place where stockmen may meet together the Winter Fair is coming into its own.

The Dairy Features

In speaking of the dairy features of the Fair we might speak a word of commendation and a word of criticism. The classes for dairy bull calves, included in the prize list for the first time this year, are a splendid feature and the dairy cattle breeders of the province were quick to

avail themselves of the opportunity it offered them. It cannot be gainsaid, however, that the dairy cattle features of the Fair, good as they were, are not truly representations of the extent and importance of the dairy industry in Ontario. The province numbers hundreds of breeders, young and old who could be attracted to the fair were conditions right. The accommodation given the dairy cattle exhibits, however, are anything but satisfactory. The overflow of the dairy stable was quartered this year in an annex, ill ventilated and hot. The result was two lots of cows under entirely different conditions, competing for the same prize. We know that the Fair management were working under difficulties this year but a continuance of such conditions in future years will do much to retard the development of the dairy end of the fair, which in the province at large, is developing more rapidly than any other branch of the live stock industry.

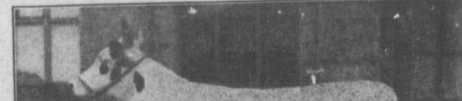
The Beef Cattle

Ontario showed its best in the beef cattle classes at Guelph. As usual, the Shorthorns were strong in numbers, there being 62 entries of this breed; Herefords too made a strong showing with 26 entries; Aberdeen-Angus entries were few; Colonel McRae, as usual, had his Galloways on exhibition. Interest in the beef cattle classes was heightened by the presence of Mr. J. B. McGregor of Brandon, with his string of nine, mostly Angus grades. The pick of this Western string was 'Vee McGregor, a full brother of the famous Glencarnock Victor 2nd, the steer which won the sweepstakes at Chicago two years ago and made Mr. McGregor famous. Early in the week it was predicted that this steer would capture the award as best beef animal on the grounds and Vee McGregor made good. This animal has exceptional finish, being well covered over the loin and quarters and 1,630 lbs. of weight is distributed where it will cut into the most valuable meat.

Other animals of splendid type were numerous, although not many were drawn out in the final contest with Vee McGregor. Judging for the champion steer or heifer, for the Galloway, Aberdeen-Angus or Hereford breeds, resulted in the win for a well meated Aberdeen-Angus steer owned by John Brown and Sons of Galt. A yearling Hereford heifer, (Concluded on page 8.)

WELL DRILLING WELL PAYS
Own a machine of your own. Cash or easy terms. Many styles and sizes for all purposes.
Write for Circular
Williams Bros., 444 W. State St., Ithaca, N.Y.

GILSON THIS GASOLINE ENGINE \$47.50
Light, powerful, easy to start, economical in fuel, and will be needed for all your household and farm work.
Write for Circular
Gilson Mfg. Co., 27 York St., Guelph, Ont.



PEERLESS PERFECTION
applies to our Poultry Fencing just right. It keeps your chickens at home and their enemies out. Each intersection securely locked—the kind that stays "out."
Peerless Poultry Fence
is made of the best open mesh steel fence with—twist, slotted and spring—end will not snap or break under sudden shocks or quick and violent changes. Our method of galvanizing prevents rust and will not flake, peel or chip off. The joints are securely held with the "Push-on" Lock, which will withstand all rusting shocks. The heavy diamond joint Peerless Poultry Fence is the greatest on the market. It will stand up to the heaviest weather and resist any wood-boring insect or any other pest. We make the Peerless Poultry Fence and sell it in every part of the world. Write for Circular. PEERLESS STEELWORK, LIVE STOCK FENCE, 1100 W. 11th St., SASKATON, SASK. THE DANFORTH-SCOTT WIRE FENCE CO., Ltd., Winnipeg, Man., Hamilton, Ont.

OUR ADVERTISERS ARE GUARANTEED
Every advertiser in our columns is guaranteed to be strictly reliable. Should you be dissatisfied with any dealings with our advertisers we will consider it a favor if you will advise us. Remember that we will stand your loss, provided of course you mention Farm and Dairy at first writing.

One of the Very Nicest Things at the Winter Fair
Bursdale Lucky Master sower is a chip of the old block; he is a son of Robt. and Masterpiece, the greatest Argentine show bull in Canada and a direct relative to Leahy (G1), a great producing cow of the breed. At Guelph he won first place in the semi-bull calf class. Owned by F. H. Harris, Mt. Eggle, Ont.
—Photo by an editor of Farm and Dairy.



Vol. XXXI

Raising All the De

EVERY pr... cow about sanitary surround... allowed to stall, or better... It is es... in order to avoid... navel cord. T... condition and... up about six w... would if milk...

It is now... that calves pr... milk are equal... and vigorous... whole milk or... with their dar... milk calf will... rugged frame... on whole milk... for the whole... smoother skin... fact that it is... of body fat... milk.

Except for removed, skin composition w... whole milk i... body, the fat... produce heat... and also to... same function... much more... grains such... The protein... constituents n... cular growth... the vital orga... dant in skim...

It matters l... taken from... dropped or is... several days... receive the fi... should always... mother for th... because the m... stimulates th... The earlier... the easier wi... the calf runs... will learn to... offered milk... separated fro... will learn to... the feeder's f... milk.
*Extracts from Mental Station