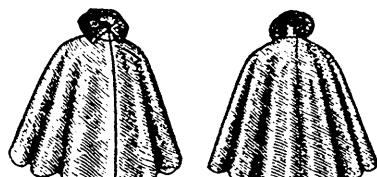
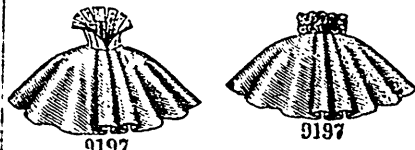




Ladies' Three-Quarter Length Cape, with Sectional Collarett: 4 sizes.  
Bust measures, 32 to 44 inches.  
Any size, 1s. 6d. or 35 cents.



Ladies' Circular Cape, without Darts (To be Made With or Without a Center Seam): 11 sizes.  
Bust measures, 28 to 48 inches.  
Any size, 1s. or 25 cents.



Ladies' Empire Cape (To be made with Standing or Tab Collar): 9 sizes. Bust measures, 30 to 46 inches.  
Any size, 1s. or 25 cents.



Ladies' Circular Cape Wrap, with Fitted Back, (To be Made with a Standing Collar and Ruffles or with a Medici Collar): 10 sizes. Bust measures, 30 to 48 inches. Any size, 1s. 3d. or 30 cents.



Ladies' Box-Plaited Cape, with Yoke and Scalloped Collar: 8 sizes. Bust measures, 30 to 44 inches.  
Any size, 1s. or 25 cents.



FOR  
FANCY  
DRESS,  
MASQUER-  
ADES,  
ETC.

## We have just Published a NEW EDITION of Character and Unique Fashions

It contains original articles on The Development of Dress, Ancient and Modern Japanese Costumes, etc., and is illustrated with Styles unusual in Character, representing Peculiar National Fashions and Notable Individual Apparel. *For Character, Theatrical, Fancy Dress and Masquerade Purposes it is invaluable.* Collegiate and Clerical Styles are fully shown. Sent postpaid on receipt of 5 Cents to prepay charges.

THE BUTTERICK PUBLISHING CO. (LIMITED).

7 to 17 West Thirteenth Street, New York.



Ladies' Long Gored Cape (To be Made in One of Two Lengths and with the Seams Closed to the Top of the Collar or Left Open to Give a Tab Effect): 9 sizes. Bust measures, 30 to 46 inches.  
Any size, 1s. 3d. or 30 cents.



8869



8869



8893

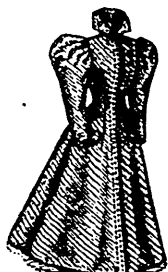


8893



8893

Ladies' Long Circular Cape (To be Made in One of Two Lengths and With or Without the Stole Collar): 9 sizes. Bust measures, 30 to 46 inches.  
Any size, 1s. 3d. or 30 cents.



1441



1441



1103



1103



1103

Ladies' Single-Breasted Long Coat (To be Made with a Medici Collar or with a Storm Collar that may be Worn Standing or Turned Down) Known as the Newmarket: 9 sizes.  
Bust meas., 30 to 46 ins. Any size, 1s. 8d. or 40 cts.

Ladies' Long Empire Coat, Box-Plaited at the Front and Back and having a Square Yoke (To be Made with Flaring Circular Cuffs or Turn-Up Cuffs and With or Without the Sailor Collar): 10 sizes.  
Bust meas., 38 to 46 ins. Any size, 1s. 3d. or 40 cents.



1440



1440

Ladies' Long Coat, with Removable Circular Cape (Scoop Neck): 9 sizes.  
Bust measures, 30 to 46 inches.  
Any size, 1s. 8d. or 40 cents.



8558



8558

Ladies' Skeleton Waterproof Cloak (To be Made with One of Two Cuffs): 10 sizes.  
Bust measures, 28 to 46 inches.  
Any size, 1s. 6d. or 35 cents.

### World's Fair Premium Tailor System



#### OF Dresscutting

Sent for  
Ten Days' Trial to  
any address.

Received First-  
Class Diplomas  
at Toronto and  
Montreal Exposi-  
tions, 1897.

WM. SPAULDING,  
278 Euclid Ave.  
TORONTO, ONT.

A HARVEST FOR AGENTS.