

THIS ISSUE CONTAINS

Skew Connections in Complicated Steel Structures  
A Page of Costs

# Canadian Engineer

A WEEKLY JOURNAL

For CIVIL, MECHANICAL, ELECTRICAL and STRUCTURAL ENGINEERS and CONTRACTORS

MONTREAL OFFICE:  
B 32 Board of Trade Building

WINNIPEG OFFICE,  
Room 315, Nanton Building

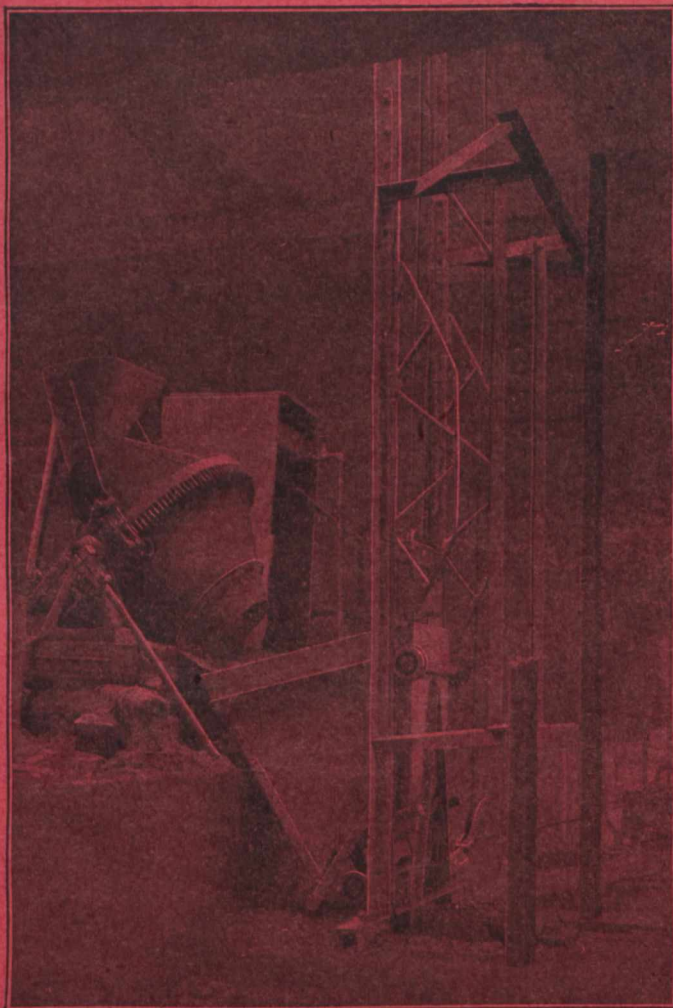
Vol. 16.

Toronto, Canada, March 19th, 1909.

No. 12.

## THE SMITH

### Automatic-Dumping Concrete Elevator



Deserves the attention of all Contractors who face the problem of raising Concrete to any considerable height above the Mixing Plant.

It is a complete unit and effects great saving in handling the Mixer output.

The assembling of the Elevator is a simple matter.

Write for our Special Catalogue on the subject.

We will be glad to receive your enquiries for

Rock Crushers, Hoisting Engines, Concrete Cars, Carts and Barrows, Wire Rope, Derricks, Blocks, Winches, etc.

## MUSSENS LIMITED

Montreal Toronto Cobalt Winnipeg Vancouver