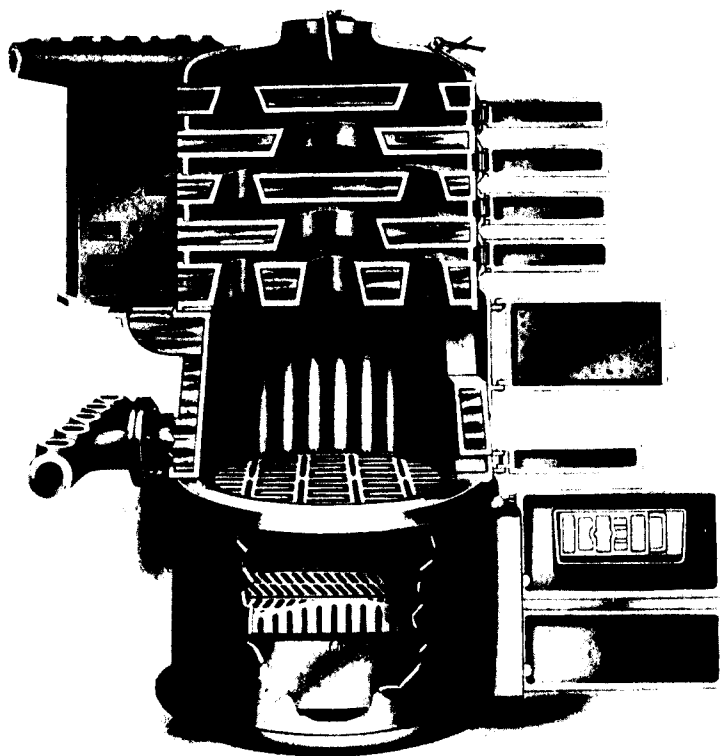


## An Increase in Fuel Adaptability

## An Increase in Heating Capacity



The "Sovereign" Hot Water Boiler.  
New model with Large Flared Flues

The advantage of the "Sovereign" Hot Water Boiler, with the Large Flared Flues, is that it gives the Householder a chance to reduce heating expense, without depriving himself of the comfort of a well heated house.

The new model "Sovereign" will burn hard coal, soft coal, rough or cut wood or waste material of any description, and it is so designed that it will draw from any kind of free burning fuel its full heating value.

The 1913-1914 "Sovereign" will burn *hard coal* to better advantage than any boiler designed to burn hard coal only.

It will burn *soft coal* to better advantage than any boiler designed to burn soft coal only.

And it will burn wood, or any other free burning, heavy smoke producing fuel, without any of the inconveniences that generally result from using such fuel in boilers designed for clean burning fuel exclusively.

With the new model "SOVEREIGN" the house may be heated during the early spring and fall with waste wood or other material, or the cheapest kind of free burning fuel—while the winter fires may be maintained, with entire satisfaction, on the kind of coal or wood that is most readily available in the locality where you live.

*If you do not thoroughly understand the importance of the Large Flared Flues as an improvement in Boiler construction, drop us a line and we will be pleased to go into the matter with you.*

# Taylor-Forbes Company Limited Guelph, Ont.

TORONTO—1088 King St. W.  
WINNIPEG—Vulcan Iron Works

MONTREAL—246 Craig St. W.  
QUEBEC—Mechanics Supply Co.  
CALGARY—P. D. McLaren, Limited

VANCOUVER, B.C.—1070 Homer St.  
ST. JOHN, N.B.—32 Dock St.