



Black Watch

Black Flag
The Chewing Tobacco
of Quality.



ESTD 1872

"FENERTY" SHOVELS

-FOR-

Miners, Contractors and
Heavy Work.

"GILMOUR" SHOVELS

-FOR-

General Purposes.

MANUFACTURED BY

The **HALIFAX SHOVEL CO**
HALIFAX, N. S.

ALL GOODS GUARANTEED.
SPECIAL SIZES and SHAPES MADE TO ORDER

Genuine Garlock Packings
FOR ALL PURPOSES.

Pipe and Boiler Coverings,
ENGINEERS SUPPLIES.

also

"Tauril" High Pressure Jointing
The Best Sheet Packing yet
Produced.

THE GARLOCK PACKING CO.
HAMILTON, ONTARIO.

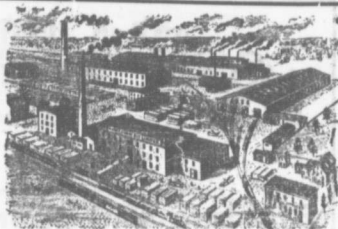
Used by Collieries in Lancashire, Staffordshire
& Yorkshire

XTERRA' COLLIERY LAMP OIL.

For Maccani, Muscels Deflector or Closed Lamp

PURE WHITE FLAME LOW PRICE
E. WOLASTON, Dutton St MANCHESTER

Sole Representatives for Canada, **AUSTIN BROS.,**
Halifax, N. S.



-MANUFACTURERS OF-

RAILWAY
STREET and
MINING

CARS,

CAR WHEELS Church Pews,
FORGINGS & Fittings for Stores, Schools, &c
CASTINGS A SPECIALTY

Large Stocks of Foreign and Domestic Lumber on Sale.

Rhodes, BUILDING MATERIALS
GENERAL
Curry & Co., Ltd.
Branch ROBBIE STREET,
HALIFAX, N. S. AMHERST, N. S.

INTERCOLONIAL RAILWAY

On and after SUNDAY, JAN. 10th 1909 trains
run daily, (Sunday excepted), as follows:—

-TRAINS LEAVE STELLARTON-

No 144 Mixed for Hopewell	5.56
No 79 Mixed for Truro	6.30
79 Mixed for Hopewell	7.00
18 Express for Halifax and St. John's	7.40
31 Mixed for Pictou Landing	7.40
61 Mixed for Pictou	7.45
65 Mixed for Miramichi	8.30
19 Express for Sydney	11.10
55 Mixed for Pictou	11.15
56 Mixed for Truro	11.15
130 Mixed for New Glasgow	12.10
39 Express for Halifax and Montreal	12.15
140 Mixed for Pictou	12.30
101 Mixed for Pictou Landing	12.45
52 Mixed for Miramichi	12.10
69 Mixed for New Glasgow	12.50
17 Express for New Glasgow	12.50
64 Express for Pictou	12.55

-TRAINS ARRIVE AT STELLARTON

79 Mixed from Hopewell	6.30
79 Mixed from Truro	7.00
61 Express from Pictou	7.20
18 Express from New Glasgow	7.35
31 Mixed from Hopewell	7.55
56 Mixed from Truro	8.00
55 Mixed from New Glasgow	10.05
79 Mixed from Pictou	10.55
65 Mixed from Miramichi	12.15
12 Express from Halifax and St. John's	12.15
130 Mixed from Pictou	12.30
39 Express from Sydney	12.45
52 Mixed from Pictou Landing	12.50
77 Mixed from Hopewell	12.45
69 Mixed from Pictou	12.45
65 Express from New Glasgow	12.45
17 Express from St. John's and Halifax	12.45

All trains are run by Atlantic Standard time Twenty-four
hour notation. Twenty-four O'clock is midnight. Moncton,
N. B., Dec. 31st, 1908.

Sleeping and Dining Cars between Halifax
and Sydney, on Nos. 19 and 20 trains