

12. An oblique cross-vein beyond end of the subcosta ; wings not involute *Nemoura*.
 No oblique cross-vein beyond end of subcosta 13.
13. Wings involute ; pronotum as broad as long *Leuctra*.
 Wings not involute ; pronotum longer than broad *Perlomyia*.
14. The space beyond discal cell longer than discal cell *Arsapnia*.
 The space beyond discal cell shorter than the discal cell *Capnia*.

LIST OF SPECIES.

Pteronarcys Californica, Newport. — A female from Vancouver (Harvey).

Pteronarcys princeps, n. sp. — Head dark brown or black above, pale around ocelli ; antennæ blackish-brown ; pronotum black ; a reddish-yellow spot in middle of front and hind margin, not distinctly connected ; rest of thorax blackish ; abdomen paler brown, blackish on pleura, base of venter paler. Legs dull blackish-brown ; wings rather smoky to quite dark, the apical third from just before the pterostigma outward is more infuscated, and there is a more distinct black cloud below the pterostigma ; venation blackish-brown ; in the male the basal part of the abdomen is rather orange. The head is much narrowed in front ; the pronotum has all the angles acute, and the sides are slightly rugose ; the male tip of abdomen is much like *Pt. Californica*, but the scar each side is larger, and the area that separates them is narrower at tip than in that species. The ventral plate of the female (Fig. 16) has two very large hairy processes fully three times as long as in *Pt. Californica*.

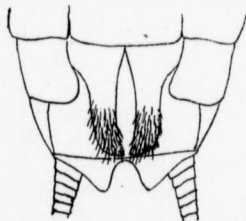


FIG. 16. — Ventral plate of female of *Pteronarcys princeps*.

Expansion, 70–75 mm.

One pair from Mission, B. C., April (Harvey).

Perlodes signata, Hagen. — Vancouver, 12th April (Harvey).

Perlodes irregularis, Banks. — Glacier, B. C., 21st August, and Laggan, Alta., 22nd July and 23rd August ; Kaslo, B. C., June (Currie, Dyar, Caudell) ; Ainsworth, 11th July (Currie).

Isogenus frontalis, Newman. — Vancouver, 19th May (Harvey) ; Kokanee Mt., B. C., 10th August, 9,000 ft., on snow (Currie).