

NOTES.

Mr. George Munro, of Peterboro', Ont., was recently granted a patent on a turbine water wheel.

A cylindrical foot of water weighs 49.1 pounds, while a cubic foot weighs 62.5 pounds, still in the same ratio. We append a few useful multipliers.

Cubic feet of water $\times 62.5$ = pounds.

Cubic inch of water $\times .03617$ = pounds.

Cylindrical inch $\times .02842$ = pounds.

Cylindrical feet $\times 49.1$ = pounds.

183.346 circular inches = 1 sq. foot.

2200 cylindrical inches = 1 cubic foot.

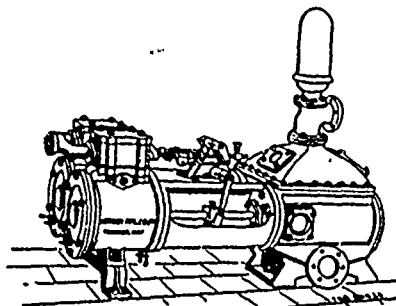
These will give a very accurate approximation and will help in many calculations.

It will pay to set them down in the note book and to memorize those likely to be useful in every day practice.

Journals that have been heated, then cooled with cold water, often break afterward without apparent cause. It has been shown that many such fractures are due to the water treatment, which changes the structure of the metal.

Mrs. Wm. Collette has taken an action for \$5,000 damages against the Montreal Elevating Co., on account of the death of her husband, who was an engineer in their service, and was killed by the explosion of a boiler, which, she alleges, had not been inspected.

ROBIN & SADLER
Leather Belting
 SPECIALTIES
 DYNAMO BELTS WATERPROOF BELTING
 MONTREAL TORONTO
 2518 & 2520 NOTRE DAME ST. 125 LAKE ST.



OUR MAKE OF
STEAM PUMPS
 ARE THOROUGHLY RELIABLE.
NORTHEY MFG. CO.
 (LIMITED)
 TORONTO.

THE "CLARK" WIRE.

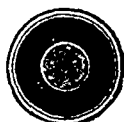
Insulation Guaranteed wherever used, Aerial, Underground or Submarine.



In a letter from the Inspector of the Boston Fire Underwriters' Union, he states: "A thoroughly reliable and desirable Wire in every respect."

The rubber used in insulating our wires and cables is especially chemically prepared, and is guaranteed to be water-proof, and will not deteriorate, oxidize or crack, and will remain flexible in extreme cold weather and is not affected by heat. The insulation is protected from mechanical injury by one or more braids, and the whole slicked with Clark's Patent Compound, and special extra finish, which we have now adopted for all our solid wires as an extra weatherproof protection, and also preventing chafing and abrasion, which is water, acid, and to a very great extent fireproof. Our insulation will prove durable when all others fail. We are prepared to furnish Single Wires of all gauges and diameter of insulation for Telegraph and Electric Lights from stock. Cables made to order. We are now prepared to furnish our Clark Wire with a white finish for ceiling, clean work as well as our standard color.

Clark Joint Gum should be used for making waterproof joints. This is put up in half-pound boxes, in strips about one foot long and five-eighths inch wide, and when wrapped about a joint and pressed firmly it makes a solid mass. For railway and Motor use, we make all sizes of stranded and flexible with Clark insulation. We guarantee our insulation wherever used, Aerial, Underground, or Submarine, and our net prices are as low, if not lower, than any other first-class Insulated Wire. We shall be pleased to mail Catalogues with terms and discounts for quantities.



EASTERN ELECTRIC CABLE CO.,

61 to 65 Hampshire Street,

BOSTON, - MASS.

HENRY A. CLARK, Treasurer and Gen'l. Manager.
 HERBERT H. EUSTIS, President and Electrician.



LAKE GIRARD SYSTEM OF MINES.

Lake Girard Mine. • Nellie and Blanche Mines. • The Horseshoe Mine.
 CONTROLLING 2,500 ACRES CHOICEST MICA LAND.

The LARGEST USERS in the United States are among our EARLIEST CUSTOMERS, and can testify to the excellence of our material as well as to our PROMPTNESS OF DELIVERY.

ALL MICA SHIPPED BY EXPRESS, and sales made at PRICES INCLUDING ALL CHARGES TO POINT OF DESTINATION.

Why buy through MIDDLEMEN and pay COMMISSION, when you can DEAL DIRECT WITH THE MINES, and receive your MICA AT FIRST HANDS?

We are prepared to SUPPLY the requirements of SMALL USERS, on advantageous terms, looking to the FUTURE GROWTH of their BUSINESS.

Our PRESENT STOCK OF MICA actually mined EXCEEDS 300 TONS, and this, too, AFTER A YEAR'S STEADY OPERATIONS.

ALL SIZES AVAILABLE, and we will either cut to size or in rough split sheets, with edges trimmed or untrimmed, as may be desired. We will cut discs or segments of circles when required.

Send us a SAMPLE ORDER—we only ask a fair trial; once we receive that, we are not afraid of holding your business. Address all communications to

DON C. WATTERS,

240 Daly Avenue,

Ottawa, Canada.