

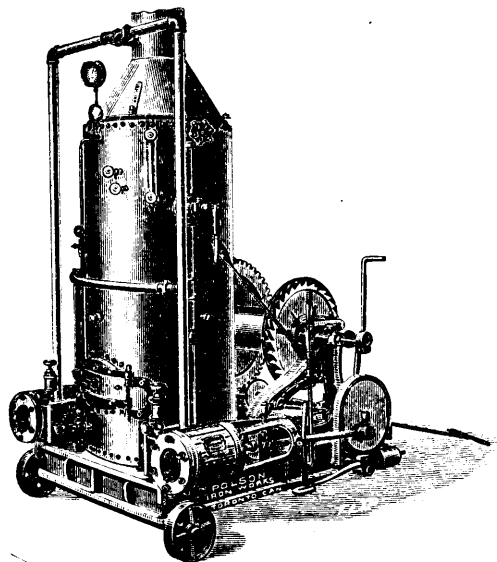
F. B. POLSON

J. B. MILLER

POLSON IRON WORKS

TORONTO, ONT.

THE BEST EQUIPPED BOILER AND ENGINE WORKS IN CANADA



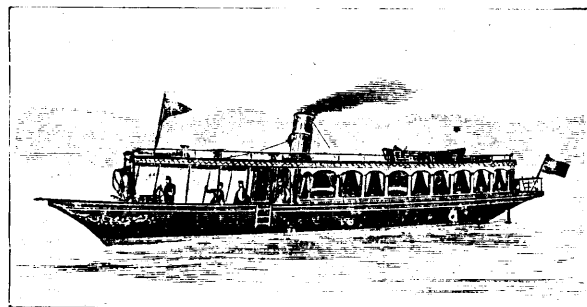
Hoisting Engines

Steel Boilers . .

Mine Pumps . .

Rock and

Ore Breakers . .



STEAM YACHTS AND LAUNCHES

The Brown Automatic Engine

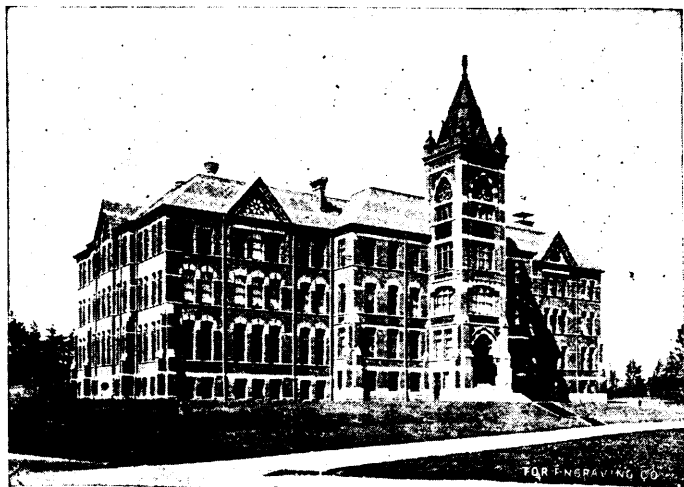
GET OUR PRICES BEFORE ORDERING

ESPLANADE FOOT OF SHERBOURNE ST. TORONTO.

School of Practical Science, Toronto

ESTABLISHED 1878.

AFFILIATED TO THE UNIVERSITY OF TORONTO.



This School is equipped and supported entirely by the Province of Ontario and gives instruction in the following departments:

- 1—CIVIL ENGINEERING
- 2—MINING ENGINEERING
- 3—MECHANICAL & ELECTRICAL ENGINEERING
- 4—ARCHITECTURE
- 5—ANALYTICAL AND APPLIED CHEMISTRY

Special Attention is directed to the Facilities possessed by the School for giving Instruction in Mining Engineering. Practical Instruction is given in Drawing and Surveying, and in the following Laboratories:

- | | | |
|------------|----------------|--------------|
| 1—CHEMICAL | 3—MILLING | 6—ELECTRICAL |
| 2—ASSAYING | 4—STEAM | 7—TESTING |
| | 5—METROLOGICAL | |

The School also has good collections of Minerals, Rocks and Fossils. Special Students will be received as well as those taking regular course

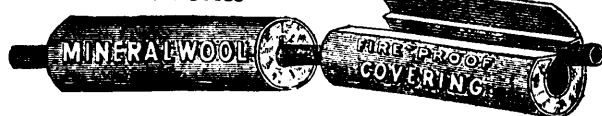
FOR FULL INFORMATION SEE CALENDAR.

L. B. STEWART, Secretary.

BY THE USE OF...

MINERAL WOOL

"Eureka"



SECTIONAL... COVERINGS

FOR STEAM PIPES, BOILERS, ETC.

Large saving in Fuel is made. Radiation and Condensation prevented. Steam carried long distances without loss of power.

Eureka Mineral Wool & Asbestos Co. 114 Bay Street ...TORONTO