

Random Jottings.

It seems, Mr. Editor, that your Random Jottings have passed away, and I have never heard from them. I am a very lean survivor of the hard times we are passing through since the Cocker-Squires dynasty have ascended the Throne.

A very important and happy marriage has, we learn, recently taken place. The important and prosperous houses of Harcourt and Somerset have united under one name and will in future be called Hallingside.

Messrs. Stone of Monroe have just delivered a very fine vessel, which will be engaged in the foreign trade. This is the fourth foreign going vessel to be built in Smith Sound since the war started—a very good showing.

Recently Mr. Currie of Britannia removed his dwelling house, which was over 50 years old. It had a slate roof, and when removed the slate was just as good as they were 50 years ago. It is good as they that in those days when all kinds of inferior roofing material were for sale, the most perfect and durable roofing material in the world is to be found in Smith Sound in abundance, and there is no one to produce it in its respectable form. Plenty of slate is found both in Smith Sound and Harcourt Sound. An English Co. carried on the manufacture of slate shingles at Harcourt for some years, and then shut down, and to-day thousands of dollars worth of machinery is lying idle. It seems a great pity that there should be clay and slate enough to build thousands of fire proof homes and warehouses, so near our capital, and yet people go on building wooden structures that after a few years will rot if not destroyed by fire. Random is the only brick producing locality in Newfoundland.

It may surprise people to read that the big modern building known as the asylum for the insane was built on top of native brick, manufactured by Messrs. Pelly of Smith Sound. So our friend John Anderson, can get all the material to make St. John's a fire proof city of slate and brick. Pelly Pittman and Smith, who operate the three yards, are not doing much as sales are slow.

Last summer a Norwegian Company reported half million brick. It seems they were under the impression that brick was not produced in the colony. If only we didn't blame them coming from Norway, but if it's true our Government gave them a free duty on the bricks, then it seems they were a million miles further away from Newfoundland than Norway as far as their knowledge and interest in local bricks were concerned. However, American and Canadian firms have shown much interest in local brickyards, and large quantities of local brick have gone in the big bank buildings erected in St. John's by Toronto contractors, and both the Dominion Bank and Steel Co. and the Anglo-American Development Co. have large quantities of brick from C. & M. Pelly yard.

The Bar—a shallow place at the end of Random Island, which can be crossed at high tide—has the reputation of being the base from which Cormack started his first trip to the island of Nfld. Repeated attempts have been made to the Government to have the Bar dredged, and the constituents of the present trial of the Squires men who represent us, hope will have this necessary work accomplished before again soliciting our support. Stick to your promises.

The Shore fishery in Random has been poor this year, and the recent coming up of the Grand Falls paper mill will be a good help to people who have done nothing at the fishery.

Boal H. has the distinction of being the junction of the Bonaville Railway, and is a growing town. Messrs. Wiseman have recently added a steam saw mill, and Messrs. Tully a motor mill. At the east end of the town is the store and factory of Messrs. Mills & Sons, 1 mile further down on the railway is the siding and brick yard of Messrs. Pelly.

Clareville has the distinction of being the town where the Nfld. railway crosses Trinity Bay. A large wharf and many cargoes of coal are loaded every year, giving employment to a large number of men, as being a station of large for breeding farms, it has the most successful Poultry farm in Nfld. If not, at least, they have very fortunate in developing this industry and domesticating the beautiful and costly Silver Fox of the Nfld. But I guess I am using too much of your very valuable space.

A WRITER AT RANDOM.

Random, Aug. 18, 1921.

Yours again—Editor.

Shipping Notes.

Black Madeline Constance is at present receiving extensive repairs at the wharf.

General Gough is loading for export at Grand Bank from Messrs. Currie Ltd.

The H. L. is loading limestone at Grand Bank for the D.S. Co., Sydney.

H. L. Montague sailed for Sydney yesterday to load coal for the Harcourt Co.

From left Clareville at 9.30 yesterday for Sydney, where she had coal for the Red Nfld. Co.

Messrs. M. built at Bedford for the schooner loaded herring for the schooner and going to head of the fog was fifteen days on the way.

The Rose M. was launched in the morning under conditions very laying up since then. Capt. Patrick is in charge of the vessel.

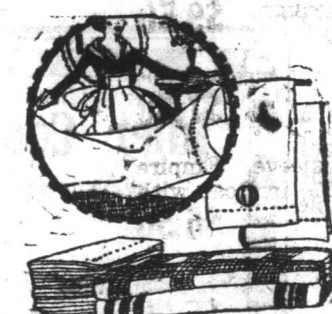
The Liniment Believes Neuralgia

Table Damasks
PURE WHITE

TABLE DAMASKS—58 inch pure White Table Damasks; equal to any you have been buying at \$1.00 yard. Friday, Saturday and Monday 89c.

BEACH LINEN—Pure White and a beauty to work up; strong even thread, that shows a good sheer surface; 36 inches wide. It has everything to recommend it. If you want a cloth for wear, see this first. Friday, Saturday and Monday 33c.

TABLE DAMASKS—A couple of piece of limp finish Table Damasks, 64 inches wide; unusually good looking patterns to select from. Reg. \$1.30 yard. Friday, Saturday and Monday \$1.10



MUSLIN CUSHION COVERS—A couple of dozen of all White Muslin Cushion Covers, showing frilled border and embroidered corners, others plain surface. Dollar line. Friday, Saturday and Monday 82c.

CUSHION COVERS—Neatly patterned. Fancy Chintz Cushion Covers; square shape, bound with fancy twisted cord and loop corners; suit any room. Reg. \$1.20. Friday, Saturday and Monday 95c.

Sale of Lovely
WHITE QUILTS

SALE OF WHITE QUILTS—For this week we show some very superior values in all White Quilts. They come in assorted sizes, and offer you choice of Imitation Marcella in slight and heavier weights, others in heavy Honeycomb, plain hemmed edge.

Special Prices \$2.55 up to \$10.90 range from . . . Interesting values abound.

BOLSTER CASES

English White Linen Bolster Cases, 17 x 54; splendid quality; linen buttoned end. Friday, Saturday and Monday, each . . . 94c.

PILLOW CASES

Elegance in Pillow Cases. These are certainly good to the eye; hemstitched frill and neatly embroidered, and that nice fine material usually associated with first class goods. \$1.70 values. Friday, Saturday and Monday . . . \$1.49

STRONG VALUES THAT STRESS
THEIR IMPORTANCE TO THE THRIFTY

Values Expressive of Worthiness

This Store Presents for

FRIDAY, SAT. and MONDAY

This Store has always adopted the principle of Honesty in its advertising, and it is faithfully carrying it out to-day.

Our announcements carry no Exaggerated Statements, you are sure to find everything as represented. We can never betray your confidence in us or our advertising.

Again, if you purchase anything here that is not entirely to your satisfaction, we will gladly buy it back from you at its full purchase price. That's fair, is it not? Such methods have gained for us our popularity as a Satisfactory Store to deal with.

Corticelli Wools

New shipment Corticelli Knitting Wools just to hand, including Australene, Silver-glam, Syntake, in all the newest shades.

LADIES' PYJAMAS

Fine Muslin Pyjamas, "Billy Burke" style; one-piece suits with elastic at ankles, V neck, short sleeve, trimmed with Pink and Pale Blue; assorted sizes. Reg. \$2.80 suit. Friday, Saturday and Monday . . . \$1.98

Ladies', Misses' and Children's
BATHING SUITS
Up to 4.00 Suit for 1.98

BATHING SUITS—TO CLEAR—Ladies', Misses' and Children's Bathing Suits in Black Satin; long skirt, belted, with knickers, trimmed Saxe, Rose and Black and White; short sleeves; assorted sizes; Children's 8 to 14 years; Ladies 36 to 44 inch. Regular \$4.00 suit. Friday, Saturday and Monday . . . \$1.98

HAIR SWITCHES—Real Hair Switches in Dark, Medium and Light Browns. These are made full and plenty. Reg. \$1.70. Friday, Saturday and Monday . . . \$1.29

HAIR NETS—Cap Hair Nets, the invisible kind; sterilized and sanitary; without elastic; shades of Light, Medium and Dark Browns. Reg. 20c. Friday, Saturday and Monday . . . 15c.

Your Little Girl would Look Charming in One
of these Lovely

SILK DRESSES

17.00 Dress for 8.49

Handsome style Silk Dresses; to fit girls from 6 to 12 years; some in plain, others plaid and check effects; round or square neck, embroidered and braided, long sleeves with cuff; shades of Navy, Brown, Saxe, Jade and Grey; very excellent value for this sale. Regular \$17.00. Friday, Saturday and Monday . . . \$8.49

CHILDREN'S SLIP-ON SWEATERS—They need them now; sizes to fit 4 to 10 years; shaped at waist, round collar with tassel; the shades are good: Peach, Rose, Turquoise and American Beauty. Reg. \$5.00. Friday, Saturday and Monday . . . \$3.98

CHILDREN'S NIGHTGOWNS—White Lawn Nightgowns, round neck, trimmed with embroidery, short sleeves; to fit 4 to 14 years. Regular value for 90c. Friday, Saturday and Monday . . . 49c.

WAISTS AND GARTERS—Dr. Parker's Waist and Garter Unit for girls and boys; neat fitting; sizes for 2 years to 14 years. Reg. \$1.20. Friday, Saturday and Monday . . . 98c.

CHILDREN'S "SLIP-ON" MIDDIES—Smart, tidy and becoming in Pink and Saxe Poplin; sailor collar, vest and pocket, long sleeve with cuff; to fit 3 to 5 years. Regular \$2.00. Friday, Saturday and Monday . . . \$1.59

CHILDREN'S OVERALLS—Fancy Striped Cotton Overall, square neck, short sleeve, belt and pockets; assorted colours; very special value. Reg. 90c. Friday, Saturday and Monday . . . 59c.

LADIES' JERSEY PANTS—Fine quality White Jersey Underpants; wide leg, lace trimmed, others cuff knee; open and closed; sizes 36 to 44. Reg. \$1.00 value. Friday, Saturday and Monday . . . 87c.

Some Splendid CURTAIN Values
are Offering this Week at BAIRD'S

TURKISH TOWELING—Hair-Bleach Turkish Toweling, Fawn with White stripes, superior quality. Reg. 45c. yard. Friday, Saturday and Monday . . . 39c.

WHITE TOWELING—Turkish soft undressed finish; nice for roller or bathroom; was 25c. yard. Friday, Saturday and Monday . . . 24c.

COTTON BATTING—Pound bundles of selected Cotton Batching, ever so useful. Friday, Saturday and Monday . . . 69c.

WHITE CURTAIN LACE—46 inch White Lace Curtains; an uncommon looking pattern, nicely bordered. Reg. 85c. yard. Friday, Saturday and Monday . . . 69c.

ECRU CURTAIN LACE—A piece or two, with a very pretty centre and fancy border; 46 inches wide; splendid value. Regular \$1.10 yard. Friday, Saturday and Monday . . . 90c.

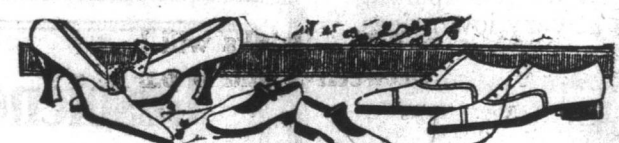
TURKISH TOWELS—These are a good size, very excellent quality. Fawn shade with Crimson stripe; value for 90c. Friday, Saturday and Monday . . . 73c.

JAPANESE HEARTH RUGS—They come in a multitude of pretty colourings and are suitable for any room; pretty centres with handsome borders; size 27 x 54. Special Friday, Saturday and Monday . . . \$2.30

WHITE LACE CURTAINS—Strong Lace Curtains in clearly defined patterns; two and a half yard size; 26 pairs Reg. \$4.00. Friday, Saturday and Monday . . . \$2.60

WHITE LACE CURTAINS—Neat Curtains for bedroom, medium width, wool edge, very pretty scroll border. Reg. \$2.70. pair. Friday, Saturday and Monday . . . \$1.95

WHITE LACE CURTAINS—Three yard Curtains, in good looking patterns; these have been sold at \$4.50 pair. Friday, Saturday and Monday . . . \$3.49

Popular WHITE Footwear
Re-Priced for Clearance
Friday, Sat. and Monday

Avail of this Opportunity!

CHILDREN'S and MISSIE'S BOOTS—Broad fitting in buttoned style, patent leather vamp and cloth uppers; sizes 9 to 12. Reg. \$4.00. Friday, Saturday and Monday . . . \$2.39

INFANTS' BOOTS—Soft Soled Boots in assorted mixed tones, buttoned style; size 4 only. Reg. 75c. Friday, Saturday and Monday . . . 49c.

WOMEN'S WHITE PUMPS and SHOES—High Heel Pumps and High Heel one-strap White Canvas Shoes, with enameled and covered heel. Values to \$2.80. Friday, Saturday and Monday . . . \$1.49

WOMEN'S WHITE POPLIN PUMPS—High Heel White Poplin Pump Shoes; cool, easy walking footwear; assorted sizes. Reg. to \$3.00. Friday, Saturday and Monday . . . \$1.69

WOMEN'S WHITE BOOTS and SHOES—Medium height White Canvas Boots, with rubber sole and heel; the shoes have apool or Cuban heel; one and two-strap styles. Reg. up to \$3.50. Friday, Saturday and Monday . . . \$1.89

TURKISH PATTERN
Hearth Rugs

Reversible Rugs in pretty colour tones to liven up your living rooms. These are away under regular prices. Two sizes. The Smaller. Regular \$5.00 for . . . \$3.95 The Larger. Regular \$10.50 for . . . \$7.45

GENTLEMEN! Have You Seen Our
Very Newest Tweed & Serge Suits?
They're Price Right and Style Right

Handsome tailored well set-up Suits that we have just hung up in our show cases. Made from best quality English Wool Tweed and Serges, and tailored to your own special order; Suits that are different, that feel fit; Suits that we would be glad to show you when you visit this section Friday, Saturday and Monday.

PYJAMA SUITS—Men's Pyjama Suits in fine Lustre, braided button loops, neat buttoned, medium neck; shades of Pink, Grey and White. Reg. \$3.50. Friday, Saturday and Monday . . . \$3.25

MEN'S WAIST BELTS—Black or Tan Leather Waist Belts in a medium width, nickel or black buckle. Friday, Saturday and Monday . . . 50c.

MEN'S NECKWEAR—A clear-out of many Dollar Scarves in the long flowing end shape; all fancy patterns. Special Friday, Saturday and Monday . . . 49c.

MEN'S SILK STRIPED SHIRTS—Silk Striped Crepe Shirts in pretty fancy mixtures, double soft cuff, an every day shirt or a holiday shirt. Reg. \$5.00. Clear-out for . . . \$2.95

BOYS' JERSEYS—To clear a couple of dozen of Boys' Fleeced Jerseys; shades of Saxe, Navy, Cinnamon and Brown; collared style. Friday, Saturday and Monday . . . \$1.49

BOYS' BRACES—Strongly made with all leather fastenings; sizes to fit the smaller boys. Friday, Saturday and Monday . . . 23c.

MEN'S UNDERWEAR—In Creamy shade, a splendid weight for early fall wear; real fine rib finish, very slight fleecing; Shirts and Pants. Special Friday, Saturday and Monday; the Garment . . . 89c.

BOYS' LACED BOOTS—Fine Dongola Kid Blucher. Cut Boots for Boys. These are honestly constructed, solid leather soles and heels; sizes 1 to 5. Reg. \$4.50 value. Friday, Saturday and Monday . . . \$4.10

PRESIDENT BRACES—Shirley President Braces, the easy fitting and preferred Braces; several dozen pairs. Friday, Saturday and Monday . . . 65c.

MEN'S SILK SOCKS—Summer weight Socks in good grade Silk, showing reinforced Little toe and heel and fine ribbed tops; shades of Navy and Brown. Reg. \$1.20. Friday, Saturday and Monday . . . 95c.

MEN'S CAPS—English Tweed Caps, pleated, and one-piece crowns, silk lined, real jaunty Caps to change into after discarding your Straw Hat. Values to \$2.40. Friday, Saturday and Monday . . . \$1.70

MEN'S HANDKERCHIEFS—Hemstitched, all White Kerchiefs; soft Lawn make. Special Friday, Saturday and Monday . . . 12c.

"Solyol" Disinfectant

FLY SWATS—A few dozen to clear. "Swat 'em 2 for 5c. hard this month."

BOTTLE CLEANERS—Wire handled, secure bristles. You need one for baby's bottle . . . 2 for 5c.

"SOLYOL" DISINFECTANT—A surgical clear disinfectant. Sprinkle it liberally round about the bathroom or kitchen sink; water soluble in any proportion; the bottle . . . 29c.

TOILET PAPER—Full weight Crepe Toilet Paper . . . 3 rolls for 27c.

