



14k. Solid Gold Cuff Links

Engraved with Monogram

\$4.00

The above illustration is an indication of the splendid values we are offering in our New Catalogue, which is now being prepared.

We are adding to our Mailing List, and will be glad to have your name and address.

SEND A POST CARD TO-DAY

D. E. Black & Co., Ltd.

Jewelers

HERALD BUILDING

Calgary

Alberta

22-inch SWITCH \$1.98 Special

Postage 15 cents extra

Switches Hair Goods

Ladies, send us your combings. We make them up into switches at 50c per ounce.

We will add new hair as desired to combings at from \$2.00 upwards.

Satisfaction Guaranteed

Elite Hairdressing Parlors
 207 Enderton Building WINNIPEG

CATALOGUE NOTICE

Send 10 cents in Silver or Stamps for our Up-to-Date 1916-1917 FALL and WINTER Catalogue containing over 400 Designs of Ladies', Misses' and Children's Patterns, as well as the latest Embroidery Designs, also a Concise and Comprehensive Article on Dressmaking, giving valuable hints to the home dressmaker.

CURLY HAIR

"WAVCURL" Imparts Beautiful PERMANENT CURLS. One packet sufficient, however, lessens your hair. One testimonial says: "My hair soon became a mass of wavy curls." Result certain. Price 2s 9d. Special reduction for few weeks. Send 1s 6d only for large size 2s 9d packet. The New Wavcurl Co., 67 Cromwell House, Fulwood Place, Holborn, London, W.C., England.

CANCER

R. D. Evans, discoverer of the famous Evans' Cancer Cure, desires all who suffer with Cancer to write to him. The treatment cures external or internal Cancer.


R. D. EVANS Brandon Man.

When writing advertisers, please mention The Western Home Monthly

Fashions and Patterns

1783—A Smart and Popular Style—Girls' dress with jacket blouse, and skirt attached to an underwaist. White linen and allover embroidery are here combined. The style is also nice for poplin, repp, taffeta, gabardine, gingham and chambrey. The skirt is gored, and gathered to the belt. The jacket is cut low in front and the right side is lapped over the left in closing. The pattern is cut in 4 sizes: 6, 8, 10 and 12 years. It requires $4\frac{1}{2}$ yards of 36-inch material for a 10-year size. For separate jacket blouse it will require 2 yards of 36-inch material. A pattern of this illustration mailed to any address on receipt of 10 cents in silver or stamps.

1784—A Neat Blouse Dress for Mother's Girl—Serge, repp, drill, linen or poplin could be used for the skirt, and crepe, batiste or lawn for the blouse. The entire dress may be one material. The skirt is buttoned to the blouse at the

1775—A Pretty Dress for Many Occasions—Embroidered batiste is here combined with Georgette crepe. Collar and plastron may be of the crepe, and inserts of lace trim waist and skirt fronts. The body and sleeve portions are cut in one. The skirt is full over the sides and back and stitched in a tuck at each side of the front panel. Gingham, lawn, embroidered voile, tub silk, taffeta, and linen are also nice for this model. The pattern is cut in 6 sizes: 34, 36, 38, 40, 42 and 44 inches bust measure. It requires 8 yards of 36-inch material for a 36-inch size. The skirt measures about $3\frac{1}{3}$ yards at the foot. A pattern of this illustration mailed to any address on receipt of 10 cents in silver or stamps.

A Splendid Suit for Sport Wear —Blouse—1766. Skirt—1765. Comprising a middie blouse, cut on new lines, and a smart skirt. White serge or Jersey cloth would be pretty for this. Taffeta, linen



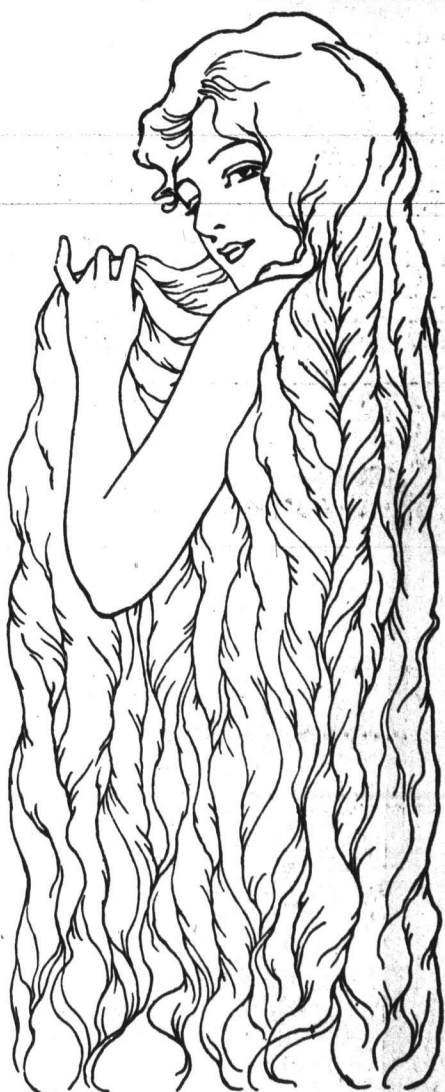
belt. The sleeve may be in wrist or elbow length. The pattern is cut in 4 sizes: 6, 8, 10 and 12 years. It requires $3\frac{1}{4}$ yards of 44-inch material for a 10-year size. Plaid gingham, in brown and blue tones, would be nice for this skirt, with white linen for the blouse, and collar and cuffs of the plaid. Khaki cloth is also good for the skirt, and tub silk or voile for the blouse. A pattern of this illustration mailed to any address on receipt of 10 cents in silver or stamps.

1777—A Set of Smart Dress Accessories—These chemisettes are practical and easy to develop. No. 1 shows a collar in flare style, with the chemisette or vest portion bloused. No. 2 has a flat, broad collar. No. 3 is finished with a high standing collar topped by a ripple flare. Batiste, lawn, organdy, net, lace, mull and linen are all good for these models. The pattern, including all styles, is cut in 3 sizes: small, medium and large. It requires for No. 1, $1\frac{1}{4}$ yards; for No. 2, $\frac{7}{8}$ yard; for No. 3, $\frac{3}{4}$ yard of 27 inch material for a medium size. A pattern of this illustration mailed to any address on receipt of 10 cents in silver or stamps.

and jabardine, tub silk and gingham also could be used. Pattern 1766 supplies the blouse, and 1765 the skirt. Both are cut in 4 sizes: 14, 16, 18 and 20 years. To make the suit of one material will require $8\frac{1}{4}$ yards of 36-inch material for a 16-year size. This illustration calls for two separate patterns which will be mailed to any address on receipt of 10 cents for each pattern.

1259—A Simple and Attractive Tub Dress—Ladies' house or home dress, with chemisette and with sleeve in either of two lengths (in raised or normal waist-line). Brown and white checked gingham was used for this style, with white corduroy for collar and cuffs. The model would be nice for striped seersucker, for chambray and percale. It is fine for drill, linen, or linene, and also good for serge, voile or poplin. It will make a nice neat business suit. The right waist front is shaped over the left and the low comfortable neck is finished with a deep collar. The sleeve may be long or short as preferred, with a neat cuff finish. The skirt is a four-gored model, cut on new lines and with ample fulness. The pat-

CUTICURA HAIR MEANS GOOD HAIR



Treatment for Dandruff

And dry, thin and falling hair: Touch spots of dandruff and irritation with Cuticura Ointment. Next morning shampoo with Cuticura Soap and hot water. Nothing better for the hair and skin than these fragrant, super-creamy emollients.

Trial Free by Return Mail

For free sample each with 32-p. Skin Book by return mail, address post-card, "Cuticura, Dept. 57 Boston." Sold throughout the world.



For Preserving, Use LILY WHITE CORN SYRUP

One-third "Lily White" to two-thirds Sugar, by weight. "Lily White" Corn Syrup prevents fermentation and mold—brings out the natural flavour of fruits and berries—and makes much more delicious Preserves, jams and Jellies than you can make with all sugar.

In 2, 5, 10 and 20 pound tins—at all dealers.
THE CANADA STARCH CO. LIMITED,
 MONTREAL 278

When writing advertisers please mention The Western Home Monthly.