

**MATINEES
WEDNESDAY
SATURDAY**

GRAND OPERA HOUSE

**EVENINGS
AND
SAT. MATINEES
25¢ TO \$1.50
WED. MATINEE
25¢ TO \$1.00**



JULIA ARTHUR

ENGAGEMENT EXTRAORDINARY!

TORONTO ONE OF THREE CITIES OUTSIDE OF NEW YORK, BOSTON AND CHICAGO TO SEE BEAUTIFUL AND TALENTED

JULIA ARTHUR

IN SELWYN & CO.'S PRODUCTION OF ROBERT McLAUGHLIN'S ABSORBING DRAMA

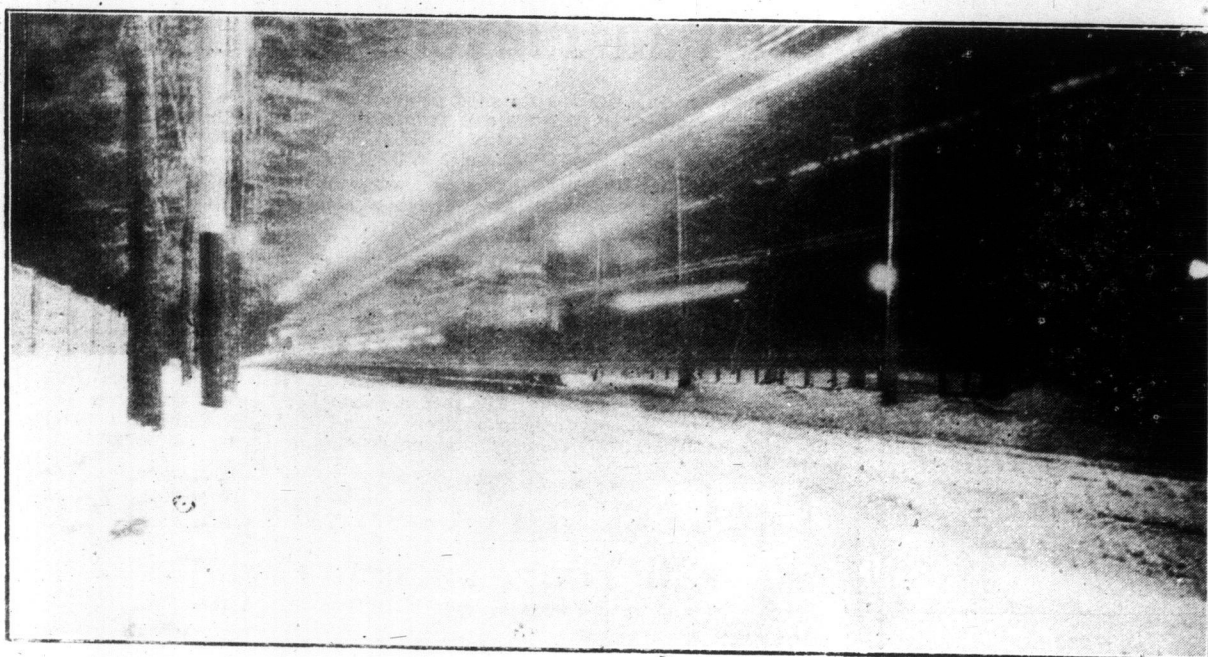
THE MOST TALKED OF PLAY IN YEARS



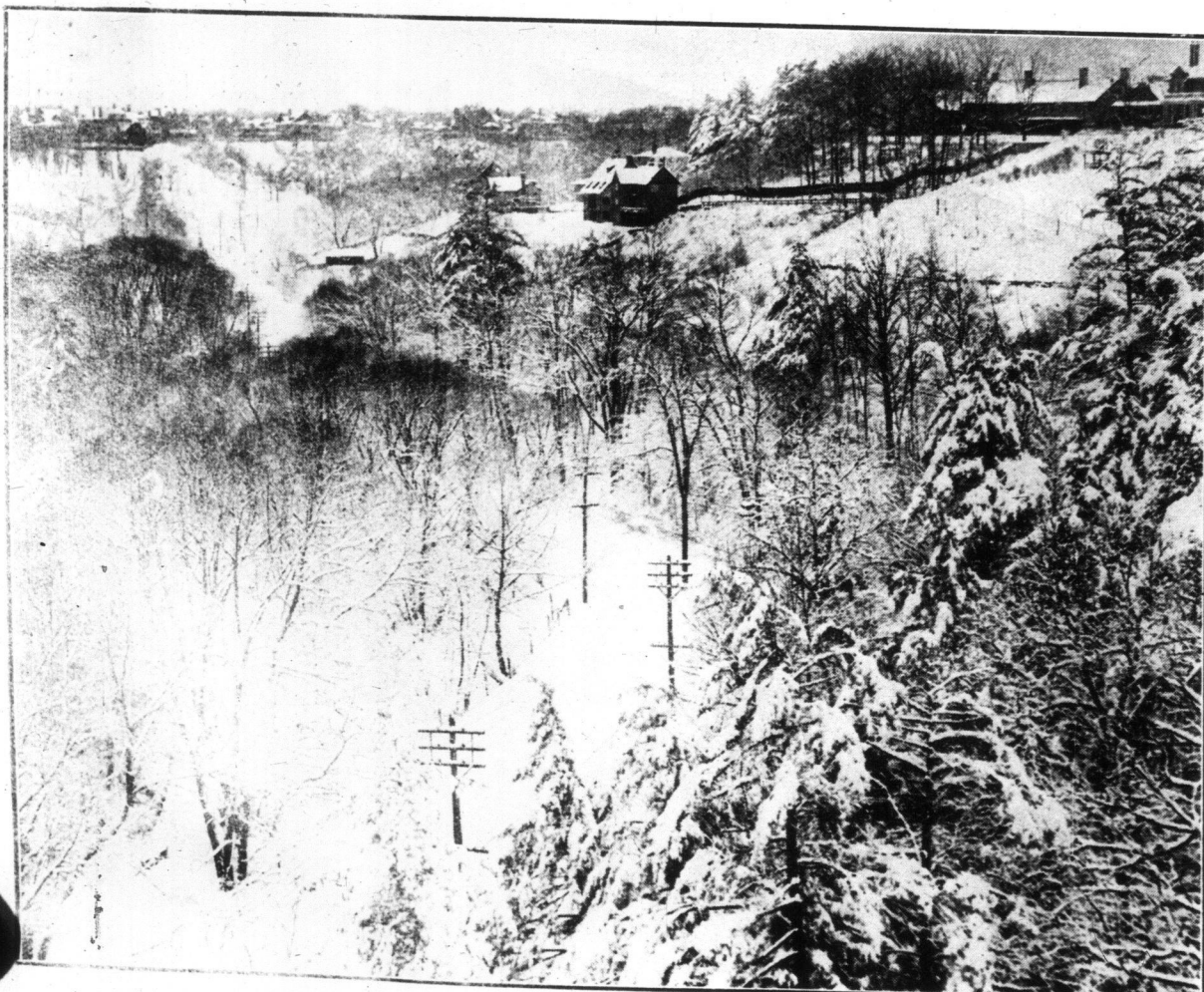
JULIA ARTHUR

"THE ETERNAL MAGDALENE"

NEXT WEEK—FIRST TIME IN TORONTO OF THE BIG "WATCH YOUR STEP" WITH MRS. VERNON CASTLE, FRANK TINNEY RAGTIME RIOT WITH A GALAXY OF STARS BERNARD GRANVILLE AND 100 OTHERS



The night of the storm. Striking photograph secured during the electrical display on Monday night, March 6, opposite the Stadium, on Bloor street.



A beautiful picture painted by the snow. View east from the bridge over the second ravine in Rosedale after a snow storm.



Corp. Alex Macdonald, formerly of The World composing-room staff, now training with the 59th Battalion.



Gunner G. Morris, 34th Battery, C.F.A., C.E.F., who resigned a good position in Detroit to come home and enlist.



Gunner Gordon Peters, 30th Battery, C.F.A., C.E.F.



Erindale football team. This splendid sporting aggregation held a record of never having lost a game until last season, when, the team being weakened by enlistments, they lost two.



In the Old Mill Race. 91st Battalion, during manoeuvres in sham fight held at the westerly limits of the city.

OFFICE FO
C. F. B. Building,
115 King Street, over
R. H. WILLI
88 King
PROBS—Fa
CAN
Fort
BRIT
A Bi
FOES BE
FRESH
ABOVE
Germanic Ch
Haudremor
Damlo
QUIET SU
Hostile Artil
Slackens
fantry
Special Cable to T
LONDON, Mar
ing partial attac
positions during
tion of the front
of Vaux and th
and a rather ag
the Vaux-Dami
evening, both c
ceded by violen
both being chee
of fire, the Gern
at launching fr
night and all
afternoon on the
Verdun and the
and appreciabl
Sunday.
The artillery
mittent during
passed calmly b
Germ
The German
fers to the fr
bank of the Me
French attacks
which, they say
ing. Artillery
increased to ve
on the right b
fighting develop
the southward
to the westward
for defence wo
being arrived
ing.
The German
planes were us
railway station
Clermont to Y
and Vesoul, to
French bat
active along t
front. These a
near Boesme
destructively
at Neuville an
north of Rheit
active in the
they cannonad
of the German
of St. Mihiel,
active in the
batteries caus
munitions dep
wood.
V
TH
RESTLE
sever
Verdu
afternoon, a
attacks wer
Germans re
fire appreci
reported fro
keeps up th
that attempt
this positio
French woo
fence. Sinc
mans have
tion is add
German su
So, unl
can bring u
after all, h
expression
ish lines in
be consider
under the
and cut of
materially
this consur
its political
man ende