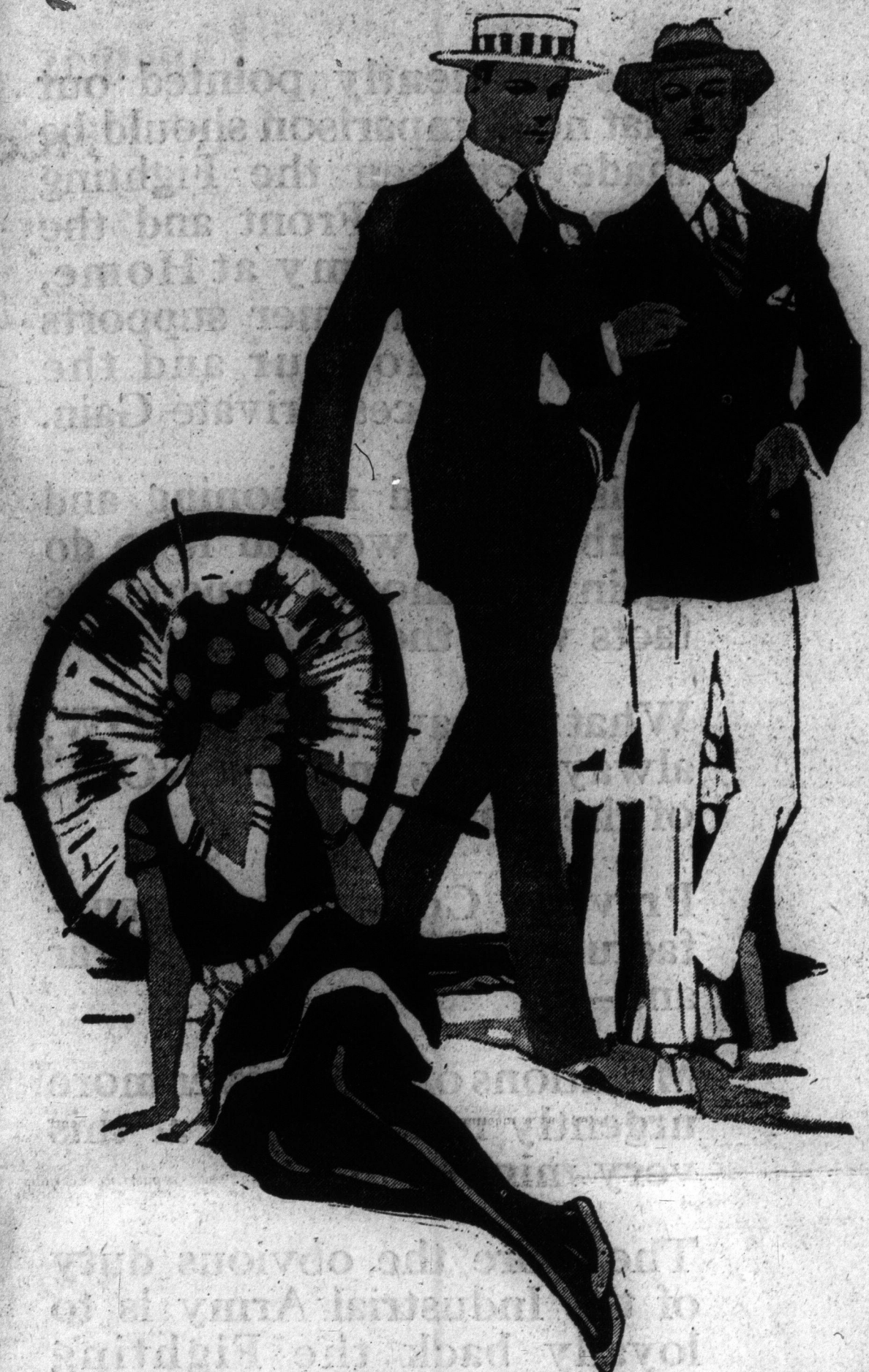


At Yonge, Queen and James  
Buses, Doors, are boxes where  
orders or instructions may be  
placed. These boxes are emptied  
every hour until 1 p.m., and twice  
in the afternoon.

# EATON'S DAILY STORE NEWS

HAVE YOU A "D. A."?  
A deposit account is one of the  
greatest conveniences in ordering  
goods by telephone. Apply for  
particulars of the "D. A." Office  
on the Fourth Floor.

## Men! A Before the Holiday Clearance of Summer Suits



**Broken in Sizes, Patterns and Styles, But in the Lot Are Models for Short, Stout and Regular. Suits of Tropical Worsteds, Priestlys and Aeropore Materials, Canadian and English Tweeds, Homespun Flannel Effects, Mohairs, Soft Tweeds and Kool Cloths.**

The average man hasn't much time to get together his needs for a vacation. In most cases he buys at the last minute with a spirit of---If it's a bargain, all right; if it's at the usual price, all right. Now here's a last minute buying chance before the holiday that means savings of the substantial sort on suits THAT KEEP THEIR SHAPE, GIVE THE WEAR, and help one to enjoy the hot weather with comfort.

### \$10

These are of Canadian and English tweeds, in light-weight fabrics, in many patterns, a few of navy blue, in greys and fawns, in stripes and mixed patterns. Suits among them are of Palm Beach material (which is well known for its lightness in weight and cool comfort). In stripes, checks and natural shades; also greys, blue and blacks, with small hairline stripes. Sizes 35 to 44 in the lot. Special, today, \$10.00.

### \$15

These are suits of homespun, flannel effects, mohairs, soft tweed and kool cloths, in a large assortment of patterns. Coats are one-eighth and one-quarter lined. In this lot there are models for stout men, as well as regular (sizes 35 to 46). Special, \$15.00.

### \$20

They are excellent suits, made from fancy tropical worsteds, Priestly's aeropore materials, some navy blue serges, and greys in soft flannel effects; mostly all are American models. They are very attractive, and those who need suits ought not to miss them. They are broken sizes and odd suits. Reduced price, \$20.00.

### Also These Noteworthy Values in Outing Trousers

#### MEN'S WHITE DUCK PANTS

Just the thing for the sport of summer resorts or at the Beaches, where white is prevalent in clothing for men as well as women. These are made from strong, durable duck, made in outing style, with belt loops, cuffs on bottom, and varying leg lengths. Sizes 30 to 44 waist. Price, per pair, \$1.75.

**Men's Khaki Pants**, with belt loops, cuff on bottom and varying leg lengths. Made from durable khaki material. Sizes 30 to 44 waist. Pair, \$2.85.

Same style in youths', per pair, \$2.75.

**Motorcyclists' Suits**, made from khaki, in Norfolk style. Coat has wide pleats at back and front and all-around belt. Trousers have belt loops and cuffs on trousers. A very handy suit for motorcycling, hunting or fishing in, as it is not easily torn and may be washed when soiled. Each, \$7.00.

## STORE CLOSED ALL DAY MONDAY, CIVIC HOLIDAY

**Men! Hat Values Worthy of Note**  
**Special! Toyos, Fedora and Sailor Shapes at \$1.75;**  
**Boaters to Clear at 98c**

**Toyo Resembles Panama in Weave, Texture and Appearance**

These have straight and flaring brims; are trimmed with plain black or fancy puggaree bands. Sizes 6 5-8 to 7 1/2. Today, special, \$1.75.

**Sennit Boaters at Less Than Cost of Manufacture, 98c**

These are trimmed with black corded ribbon, with bow at side; have well drummed sweatband. Sizes 6 5-8 to 7 1/2. Today, 98c.

**Kiddies' Straws at \$1.98**, in a variety of colors, including green, brown, navy blue, tuscan, or white; also combination white crown with green brim, or white crown with navy brim. In sailor shape, with square or dome crown, with flaring brims, with plain or name band. Sizes 6 to 6 7-8. Special, \$1.98.

**Another Special in Kiddies' Hats at \$2.45**, which includes Milan or Shonshie braids, in sailor or "Rah! Rah!" shapes, with flexible brims, and with plain navy blue or name bands. All sizes in the lot, but not in each line. Special, \$2.45.

**Men's Educator Oxfords, Special, Pair, \$4.95**

Only a limited quantity of this famous comfort shoe, "designed to let the foot grow as it should," is to be offered today, so come early and save on this timely valuation. The Educator last is roomy, with wide toe and low heels. The leathers are fine brown kid, black vici kid, or gunmetal calf. All have Goodyear welt leather soles. Not all sizes in each leather, but all sizes in the lot. Sizes 6 to 11, in widths AA to E. Reduced to clear, today, pair, \$4.95.

**Fleetfoot White Canvas Outing Shoes**, with white corrugated rubber soles and heels, leather insoles.  
Men's 6 to 11 Boots, \$1.60; Oxfords, \$1.40.  
Boys' 1 to 5 Boots, \$1.40; Oxfords, \$1.35.  
Boys' 11 to 13 Boots, \$1.25; Oxfords, \$1.20.  
Children's 6 to 10 Boots, \$1.10; Oxfords, \$1.00.

Athletic quality in black canvas with black corrugated rubber soles and heels.  
Men's 6 to 11 Boots, \$1.35; Oxfords, \$1.15.  
Boys' 1 to 5 Boots, \$1.20; Oxfords, \$1.00.  
Boys' 11 to 13, Boots, 95c; Oxfords, 90c.  
Children's 6 to 10 Boots, 85c; Oxfords, 75c. —Fourth Floor, Queen St.

### In Search of a Camera for the Holiday?

**A Reliable Medium Sized One at \$6.50, Special.**

It takes neat little 2 1/2 x 4 1/4 pictures. It is modernly equipped, and of good appearance. The lens is a single achromatic, fitted with two-time movement and three-speed actus shutter. A brilliant view-finder, and a focusing scale also help produce good pictures. The camera is covered with imitation leather, and finished with nickel-plated trimmings. At \$6.50 a considerable saving is offered, so the special should be a popular one just before the holiday. Today, \$6.50. —Main Floor, James St.

### EARLY CLOSING

As in MAY, June and July, so in August and SEPT-EMBER, Store Closes at 1 p.m. on Saturdays. No Noon Delivery on Saturdays.

**SATURDAY 1 P. M.**  
OTHER DAYS AT 5 P. M.

### REVISED ECONOMY!



**Men's Combinations, \$1.48; Colored Neglige Shirts, \$1.69; Wash Neckwear, 25c; Outing Shirts, 98c**

**A Few of the Many Men's Wear Needs, Listed for Today, at Decidedly Unusual Prices**

The combinations are in summer weight, in natural shade balbriggan, with short sleeves and in ankle length. A few in the same style are in white, and others have short sleeves and are knee length. Sizes in the lot, 34 to 46. Today, special, suit, \$1.48.

**Men's Colored Neglige Shirts, Special at \$1.69**

Some of union taffeta, in assorted stripes of black, grey or blue on light grounds, with soft double cuffs; others of American make are fancy or plain shirting material, in neat and attractive cluster or group stripe designs, in blue, mauve, tan, pink and black. Sizes in the assortment, 14 to 17 1/2. Today, special, \$1.69.

**Men's Outing Shirts**—One line is of plain white lightweight duck, with reversible collar, breast pocket and imitation double cuffs; the others of durable wash print, with attached collar that buttons down in front, in neat stripe patterns in combinations of black and mauve, blue and black or pink and black on light grounds. Both lines are in coat style. Sizes in the lot, 14 to 18. Today, special, 98c.

**Men's Wash Neckwear**, many of which are half the usual price, are in four-in-hand style, Derby shape, with French seams, and in neat panel stripe or embroidered on white grounds. Today, special, 25c.

**Men's Two-piece Suits of Balbriggan Underwear**, shirts have long sleeves, drawers are in ankle length, with snug-fitting cuffs and ankles. Sizes 34 to 42. Special, garment, 43c.

**Men's Cotton Bathing Suits**, in two-piece style; jersey has one-quarter sleeve in plain navy, some trimmed with white or red on sleeves and bottom of trunk. Sizes 34 to 44, 69c.

—Main Floor, Centre.

THE T. EATON CO LIMITED