

SHAVINGS.

A firm in Germany is exploiting a process for staining timber, while in the log, any desired color. From samples exhibited this concern is apparently able to impregnate all soft-woods and some hardwoods with any desired shade, also to convert the lightest woods into tones as dark as ebony.

A builder of special wood-cutting tools says if it were not for the Canadian tariff he would sell five times as many machines in Canada as he now does. That suggests the idea, would Canadian or European builders sell any wood-working machines in this country if we had no tariff?—The Wood-Worker, Indianapolis.

A correspondent in Jamaica writes: "Sectional returns available show a marked increase in the importation of white pine lumber and deals, also in ready-made sashes, blinds, doors, buggy wood materials, etc., which I

have satisfied myself are of Canadian origin; yet the probability is that the credit to Canada for these commodities will be insignificant."

South Africa has to import its hardwood sleepers. Tenders have just been invited for the supply of 120,000 hardwood sleepers 7 feet by 10 inches by 5 inches, to be landed in the Colony at the rate of 25,000 a month. It is a very surprising fact that not only South Africa, but East and Central East Africa have to depend on foreign sources for their timber supply generally.

A forest of camphor trees, covering an area of some 50,000 acres, has, according to the Anglo-Japanese Gazette, been discovered in the southern part of Taiwan, containing, roughly, some 120,000 trees. The trees, which measure from eight to eighteen feet in girth, are estimated to produce 5,850 tons of camphor,

worth 1,720,000 yen. In addition to camphor trees, the forest also contains a large number of oak trees of the "red-grained" variety.

There is reposing in the lumber shed of one of the navy yards a stick of lumber that is worthy of the attention it is receiving from the old-time sailors and navigators. It is a piece of live oak, 37 feet long, 4 feet 10 inches wide and a little over 4 feet thick, and has become so hard with age that it requires the finest grade steel to make any impression on it. Its weight is estimated at between twelve and thirteen tons. The stick was originally designed for the stern post of a sister ship to the Hartford, but for some reason was never used. Some of the old tars want the stick cut and sent to a wood-working shop to be turned into pillars to be used in the corridor leading to the officers' quarters on the new battleship Connecticut.—American Lumberman.

LUMBER

We represent British Columbia firms: dimension, any size up to one hundred feet; for building or heavy buildings, finishing in cedar and fir, also shingles, we quote delivered prices to all points, Ontario lumber, lath and shingles, pine culls, hemlock joist, scantling and boards, shingles, lath, large or small quantities. FUHL & LUMBER CO., 75 Victoria Street, Toronto, Ont.

RAILS
YARD LOCOMOTIVES

For Logging Tramways, Switches Etc.
New and Second-Hand.

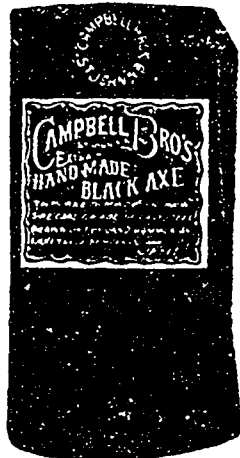
John J. Gartshore
83 Front St. West,
Opposite Queen's Hotel, Toronto.

FRANK DENTON, K. C. HERBERT L. DUNN
W. MULOCK BOULTBEE.

DENTON, DUNN & BOULTBEE

Barristers, Solicitors, Notaries, etc.

National Trust Chambers. TORONTO



OUR EXTRA
HAND-MADE
AXE

This Axe stands better in frosty weather than any axe made. . . . Send for sample. Can supply any pattern.

CAMPBELL BROS.
Mfrs.
St. John, N.B.

ESTABLISHED 1849.
CHARLES F. CLARK, President. JARED CHITTENDEN, Treasurer.
BRADSTREET'S
Capital and Surplus, \$1,500,000.
Officers Throughout the Civilized World.

Executive Offices:
Nos. 346 and 348 Broadway, New York City, U.S.A.

THE BRADSTREET COMPANY gathers information that reflects the financial condition and the controlling circumstances of every seeker of mercantile credit. Its business may be defined as of the merchants, by the merchants, for the merchants. In procuring, verifying and promulgating information, no effort is spared, and no reasonable expense considered too great, that the results may justify its claim as an authority on all matters affecting commercial affairs and mercantile credit. Its offices and connections have been steadily extended, and it furnishes information concerning mercantile persons throughout the civilized world.

Subscriptions are based on the service furnished, and are available only by reputable wholesale, jobbing and manufacturing concerns, and by responsible and worthy financial, fiduciary and business corporations. Specific terms may be obtained by addressing the company or any of its offices. Correspondence invited.

THE BRADSTREET COMPANY.

OFFICES IN CANADA: Halifax, N.S. Hamilton, Ont. London Ont.; Montreal, Que.; Ottawa, Ont.; Quebec, Que.; St. John, N.B. Toronto, Ont. Vancouver, B.C.; Winnipeg, Man.

THOS. C. IRVING,
Man. Western Canada, Toronto.



The . . .

QUEEN CITY OIL CO.
LIMITED

Head Office: TORONTO.

HIGHEST GRADES OF

Refined Oils
Lubricating Oils

AND ALL

Petroleum
Products

C. G. Young Co.
Manufacturers
RUBBER STAMPS
Cor. Yonge and Adelaide Streets,
TORONTO
Send for Quotations.



If you are interested in any of the above, send for our extensive Catalogue of stamp goods.

LOG HAMMERS, ETC.

HAMILTON STAMP & STENCIL WORKS,
Hamilton, Ont. H. Barnard, Prop.

OILS

Manufacturers High-grade Cylinder, Machine and Sawmill Oils.

Calypsol Grease

for Sawmill Purposes a Specialty. Our products are made from finest Pennsylvania stocks.

We solicit your correspondence.

St. John St.
MONTREAL
Offices and Works
Manchester, Eng.
Hamburg, Germany.
Newark, N. J.
Chicago, Ill.

**Commercial
Oil Co.,**
Hamilton, Ont.

Please mention CANADA LUMBERMAN when corresponding with advertisers.

The CANADIAN CASUALTY
and BOILER INSURANCE CO.

Head Office: N. E. Cor. Adelaide and Victoria Streets, TORONTO.

Special Attention given to Steam Boilers

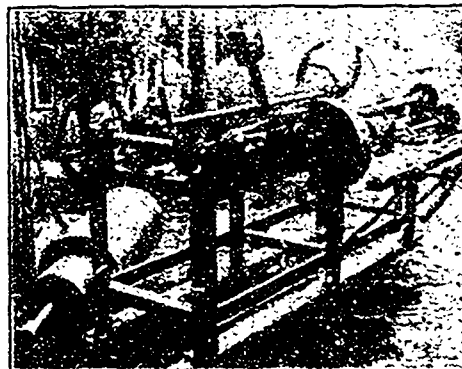
The Steam Boiler Policy of the Canadian Casualty and Boiler Insurance Co. gives Free of Cost—Regular Inspection of Boilers, Free Insurance of Engineers and Firemen, Public Liability Protection, and the adv. of our Consulting Engineers—FREE.

Write to-day for Booklet "To Steam Users."

ALEXANDER SUTHERLAND, D. D., President
H. N. BATE, W. S. DINNICK, Vice-Presidents.

A. G. C. DINNICK, Managing Director.
A. M. WICKENS, Chief Engineer.

Saw Grinders



The Kennedy Island Mill Co., Ltd., Riviere du Loup, Que., says—

"I might say to you that this Grinder is all right and has paid for itself twice over since I bought it. No Shingle Mill of any account should be without one."

TRIMMERS

If the Board does not reach the quadrant the Saw stays down and trims, see cut. To cut off more than two feet, bad ends, etc., pull the cord, see dotted lines. The whole Board can be cut into two foot lengths or trimmed in any manner. The Saw frame is balanced, the Arbor pulleys are 8 in. x 8 in. We build several styles of Trimmers, also all kinds of Saw and Shingle Mill Machinery

Our "Boss" Shingle Machine is second to none in Canada. Our sales will prove it. We make Saw Jointers and Knife Jointers, also Packing Boxes. Send for Catalogue.

B. R. Mowry & Sons, GRAVENHURST, ONTARIO