

ESTABLISHED 1880

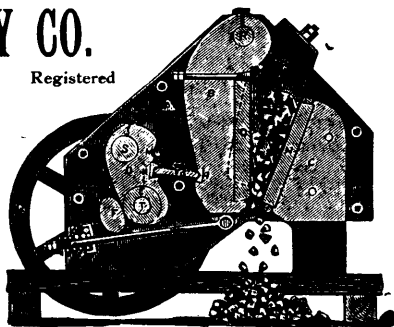
H. H. WILLIAMS**Real Estate Broker****10 Victoria Street, TORONTO.**Special attention given to sales of Toronto Properties for
Non-resident Clients.**COWAN'S****Hygienic Cocoa
Royal Navy Chocolate
And Famous Blend Coffee**are not excelled. The favorite sellers with all grocers
and general merchants.**The Cowan Co., Limited, Toronto,****Rodgers'****Cutlery**

None Genuine

Without Trade Mark

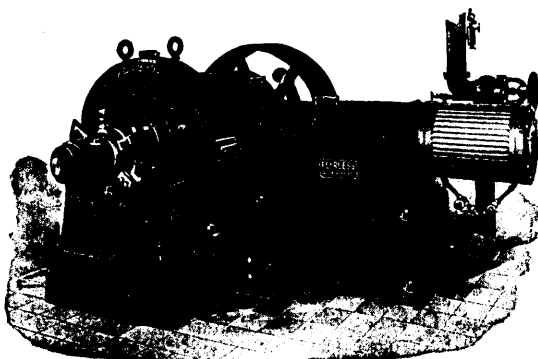
GOOD ROADS MACHINERY CO.JOHN CHALLEN, Manager. **HAMILTON, ONT.**

Registered

"Champion"**STEEL FRAME ROCK CRUSHER.** Sectional
view of parts.**Road Graders, Road Rollers,
Macadam Spreading Wagons,
Street Mud Cleaners, Road Plows
Wheel and Drag Scrapers.**Now introduced in every Province of the Dominion.
Twentieth Century Catalogue now ready.**THE ELECTRICAL
CONSTRUCTION CO.
OF LONDON, Limited****For Dynamos,
Motors, Wiring
Fixtures, Complete
Electric Plants.****Insolated Lighting Plants for
Factories, Stores, and
Public Buildings a Specialty.**

Estimates cheerfully given.

Head Office and Factory:

**90 York St., London,
Ont.**THE customs collections at Halifax for
1900 amounted to \$1,177,011.96.A NEW Baptist college is to be erected
at Grand Ligne, near St. Johns. Quebec,
at a cost of \$35,000. It is to accommo-
date 250 pupils.MONTREAL plumbers are urging the
city health committee to establish a
board of practical examiners to look into
the proficiency of all would-be plumbers
before the latter are allowed to prose-
cute their employment.FIRE did damage, a few days ago, to
the extent of some \$6,000, to the premises
occupied by Mr. Martineau, dealer in
bicycles, sporting goods, etc., in Mont-
real. Another Montreal fire was at the
Empire Dye Works. Loss about \$2,000.MOOSOMIN citizens are agitating for
the discontinuance of the Great North-
Western Railway, for the construction of
a line starting from there, running in a
northwesterly direction to the Qu'Ap-
pelle Valley, where it would strike the
survey line of the G.N.W.MR. CLEOPHAS GIGUERE, Mayor of
Contrecoeur, and both a grower and
manufacturer of tobacco, is an enthusiast
for the Canadian weed. It is his belief
that by the general adoption of intelli-
gent, up-to-date methods, Canada will in
ten years be producing the eighteen mil-
lion dollars' worth of tobacco which is
now imported into this country from
abroad.THE British Columbia Southern Rail-
way Co. will, on the 4th prox., hold a
special general meeting, in Montreal, to
decide on the means to be adopted for
raising funds to defray the cost of ac-
quiring and completing the portion of the
company's railway between Kootenay
Landing and Nelson; and also the Coal
Creek branch, the North Star branch,
and other railways and branch lines of
the company.THE Grand Trunk Railway Company
has chosen the site in Portland, Maine,
for a new grain elevator, with a capacity
of over 1,000,000 bushels, which they have
decided to build there at an expense of
\$300,000. Mr. Reeve has also approved
of the plan for the construction of a
spacious new dock for the accommoda-
tion of the ocean line steamers which
transport the Grand Trunk traffic to
British ports. The construction of both
elevator and dock will be commenced at
once, and it is expected that both will be
ready for the grain traffic next winter.MR. SMITH-CURTIS, late Minister of
Mines, in the British Columbia Cabinet,
in an interview recently, said that there
was no good reason why Vancouver
Island should not be the site of extensive
iron and steel works. The iron and
coal are more conveniently situated than
they are in Cape Breton. Of course the
market for manufactured iron and steel
was not as large on the Pacific Coast as
in the east, but the demand was steadily
on the increase. The market on the
Pacific is still in its infancy, but the
time is not far distant when that market
will be an enormously large and profit-
able one.