

LAMP STOVE,
FOR
CARPENTERS,
BARBERS,
SALOONISTS,
DRUGGISTS,
DRESSMAKERS,
PHOTOGRAPHERS,
SICK ROOMS,
&c., &c.

NOW READY.
SPECIAL PRICE LIST OF
OIL STOVES

AND
Sheet Metal Refrigerators,
made in all varieties and of the very latest design and improved principles.
Send for price list and discount sheet, if you have not yet been supplied.

McCLARY MANUFACTURING CO.
Makers of McClary's "Famous" Stoves.
LONDON. TORONTO. MONTREAL. WINNIPEG

THE WATEROUS ENGINE WORKS CO.



HEAD OFFICE & WORKS
Brantford,
Canada.
Branch Office & Works
Winnipeg,
Manitoba.

PORTABLE
Saw Mills,
GRIST MILLS,
AND
HEAVY SAW MILL
MACHINERY.

Gang Edgers, 2 to 7 movable saws.
Gang Trimmers, 2 to 6 saws.
Gang Slab Slashers.

SHINGLE MACHINES.

GANG LATH MILLS,
One to 6 saws.
DRAG SAWS,
Shingle Block Saw,
Sapper and Splitter.
Jointers saw & knife.

ENDLESS CHAIN LOG JACKS.

Ewart Chain for Sawdust
Slab and Offal Conveyors,
Lumber and Log Transfers.

GANDY BELTING.
Send for Illustrated Catalogue
Mention this Paper.

EQUITABLE LIFE

Assurance Society,

120 BROADWAY, New York.

Assets, Jan. 1st, 1885, \$58,161,826

Surplus, at 4 per cent, 10,483,617

" at 4½ per cent. 13,730,332

Income in 1884, - - 15 003,480

Paid to Policyholders
during last 25 years, 81 072,486

The amount of new assurances issued in 1884, was nearly

Eighty-five Million Dollars.

No other company in the world has ever written so large an annual amount, nor has any company approached it. It was an increase upon the assurances written by the Society in 1883; as that was an increase upon 1882; and that an increase upon previous years, The Society issues

INDISPUTABLE ASSURANCE,

AND MAKES

PROMPT PAYMENT OF CLAIMS.

Its policies are plain and simple contracts, free from burdensome and technical conditions, and **INDISPUTABLE** after three years from date. All indisputable policies are **PAID IMMEDIATELY** upon the receipt of satisfactory proofs of death, and a legal release of the claim.

By this **PROMPT PAYMENT**, the beneficiary of an **EQUITABLE** policy is not only saved from annoying delays and expenses, but receives pecuniary relief as quickly as if the amount of the insurance had been invested in a bond of the Government of the United States.

The tontine and semi-tontine policies of the Society provide full assurance in case of death. They also give to the policyholder, if he lives through the tontine period, a large return for the money paid for his policy.

HENRY B. HYDE, PRESIDENT.

JAMES W. ALEXANDER, VICE-PRESIDENT.

A. C. EDWARDS AND A. B. FIELDING,

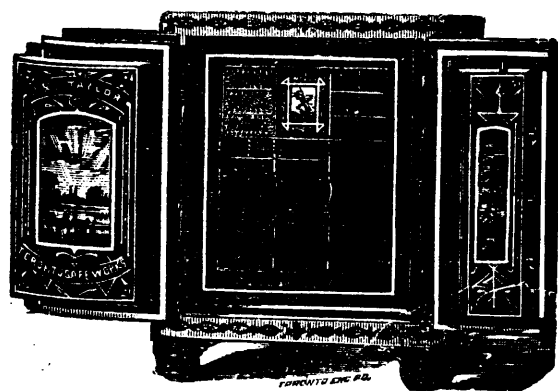
GENERAL AGENTS, HALIFAX, N. S.

W. J. SMYTH, MANAGER, TORONTO.

R. W. GALE, MANAGER, MONTREAL.

J. & J. TAYLOR,

TORONTO SAFE WORKS.



ESTABLISHED 1855.

During the past 28 years upwards of **THIRTY THOUSAND** of our Safes have been distributed throughout the Dominion from **BRITISH COLUMBIA** and **MANITOBA** to **Newfoundland**, and in many tests they have been called upon to stand **NOT ONE OF THEM** has proven a failure.

Such a record is surpassed by none, if equalled by any other manufacturer on this Continent.