

OUR CHESS COLUMN.

Solutions to Problems sent in by Correspondents will be duly acknowledged.

TO CORRESPONDENTS.

J. W. S., Montreal.—Paper to hand. Thanks. Correct solution received of Problem No. 266.

T. S., St. Andrews, Manitoba.—Correct solution received of Problem No. 264, also, of Problem for Young Players No. 261. Many thanks for Problem enclosed.

E. D. W. Sherbrooke, P.Q.—Problem 266 is rightly printed. The author must have overlooked the obvious mate you send. We relied upon his well-known skill when we inserted the position.

H. & J. McG., Cote des Neiges.—Correct solution received of Problem for Young Players No. 262.

E. H.—Solution received of Problem for Young Players No. 262. Correct.

Tyro, Montreal.—Correct solution received of Problem for Young Players No. 262.

We have received from Mr. Shaw, the Conductor of the Canadian Chess Correspondence Tourney, the following list, which will show the standing of each competitor up to the 6th inst. Since then another game has been brought to a close, so that there are only five more to be finished, in order to bring this contest to an end.

CANADIAN CHESS CORRESPONDENCE TOURNEY.

Continuation of list of games concluded. (From Oct. 10, 1879, to March 6, 1880.)

Table with 3 columns: No., Players, Won By. Lists chess matches and winners.

J. W. SHAW, Conductor of Tourney.

Table showing the standing of every player in the Tourney, to March 6, 1880.

Table with 3 columns: Name, Games Played, Won. Lists player names and their performance.

We are glad to learn from the Chess Column of the Quebec Chronicle that the spirited Chess Club of that city has organized a tournament among its members, and that the competitor obtaining the highest score will receive a magnificent chess-board, presented by a member of the club.

Mr. T. H. Forster, of Michigan, one of the American team in the International correspondence match, informs us of a draw in the last game of his series with Mr. Craik.—Hartford Times.

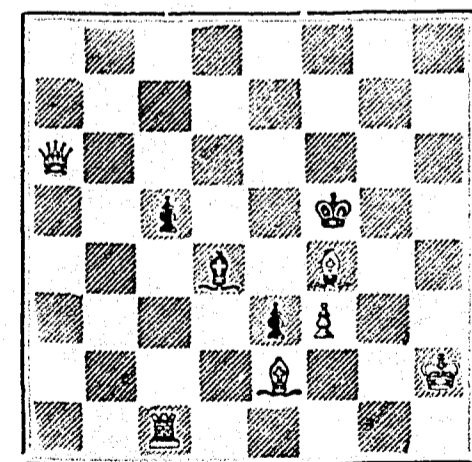
Mr. Thorold has resigned his final match at the odds of the Kt with Miss Rudge. Miss Rudge had won 12 games to 3, and only wanted one more to secure the victory.—Chessplayer's Chronicle.

Problem 267, Healey's, is solved in three moves, not two, as stated in our last Column.

PROBLEM No. 268.

By T. H. Hopwood.

BLACK.



WHITE

White to play and mate in two moves.

GAME 398TH.

CHESS IN ENGLAND.

(From Land and Water.)

THE BOSTON CONGRESS.

The following game was played in the first-class tournament at this meeting:

(Two Knights' Attack.)

Chess game record showing moves for White and Black, including piece names and square numbers.

- 14. P takes P
15. B to Kt 5
16. R to K sq
17. B to Q 2
18. B to B 3
19. Kt to Q 2
20. Kt to K 4
21. Kt to Kt 3
22. P takes P (S)
23. Q to Q 4
24. R takes R
25. R to K sq (h)
26. R to K 7
27. R takes R (d)

NOTES.

- (a) There is something to be said for 4 Kt to B 3, 5 Kt takes B, Kt takes Kt, 6 Kt takes P, Q to K 2, 7 P to Q 4, or P to K B 4, P to Q 3. If 5 P to B 3, then B to K 2.
(b) We favour P to B 3
(c) Either Castling or B to K 3 is superior, and the same may be said of P to K R 3.
(d) P to Kt 4 commands our preference.
(e) This formidable stroke demands White's utmost attention.
(f) His best resource is 22 B to Q 2. If then B takes R P, 23 B takes Kt, R takes B, 24 Q to Q 2 with satisfactory results.
(g) He obviously cannot play B takes Kt P
(h) He should plant his Q at K 4
(i) A blunder which loses offhand, but at this stage there is not much chance of saving the game. He appears to have nothing better than 27 Q to Q 2 (ch), K to R 2, 28 R takes R.

SOLUTIONS

Solution of Problem No. 266. WHITE. 1. Kt to K Kt 5. 2. Mate acc.

Solution of Problem for Young Players No. 264. WHITE. 1. Q to K B 7 (ch). 2. R takes P (ch). 3. P to K 5 (dis ch) and mate.

PROBLEMS FOR YOUNG PLAYERS, No. 265

By T. Sinclair, St. Andrews, Manitoba. WHITE. K at K Kt sq, Q at Q Kt 6, R at K R 2, B at K 2, Kt at K B 3, Kt at Kt 3, Pawn at K 4. BLACK. K at K Kt 5, Q at Q R 3, R at K Kt 2, H at Q R 2, Kt at K R 2, Kt at K 2.

White to play and mate in two moves.



6 If any of our readers have Nos. 4, 6 and 7 of Vol. 21 of CANADIAN ILLUSTRATED NEWS, and can dispose of them, we will feel obliged for any of the above numbers sent to our office, for which we will pay the subscription price. The name and address of the sender should be written on the wrapper.

BURLAND LITHOGRAPHIC CO.



CANADIAN PACIFIC RAILWAY.

Tenders for a second 100 miles section, WEST OF RED RIVER, will be received by the undersigned until noon on Monday, the 29th of March, next.

The section will extend from the end of the 48th Contract—near the western boundary of Manitoba—to a point on the west side of the valley of Bird-tail Creek.

Tenders must be on the printed form, which, with all other information, may be had at the Pacific Railway Engineer's Offices, in Ottawa and Winnipeg, on and after the 1st day of March, next.

By Order, F. BRAUN, Secretary.



Q. M. O. & O. RAILWAY.

EASTERN DIVISION.

COMMENCING ON Monday, Feb. 2nd, 1880.

Trains will run on this Division as follows:

Table with 3 columns: MAIL, MIXED. Lists train routes and departure times.

Trains leave Mile-End Station ten minutes later. General Office, 13 Place d'Armes Square. STARNES, LEVE & ALDEN, Ticket Agents. Offices, 202 St. James Street, and 158 Notre Dame Street. J. T. PRINCE, General Passenger Agent. Montreal, March 16th, 1880.

25 FANCY CARDS with Name 10c. Plain or Gold Agents' Outfit 10c. 150 Styles. Hull & Co., Hudson, N.Y.

60 Perfumed Cards—Motto Lily, Floral, Rosebud—with name and case, 10 cts. AETNA CARD CO., Clintonville, Ct.

50 Perfumed Chromo and Lace Cards, name to gold in fancy case, 10c. Davids & Co., Northford, Ct.

50 Chromo, Snowflake, Oriental, Lily, etc. Cards with name, 10c; 25 Flinstatow Cards, 10c; 1 Fern and Scroll Autograph Album, 15c; Agents complete outfit, 10c. ROYAL CARD CO., Northford Ct.

AN ELEGANT AUTOGRAPH ALBUM, containing About 50 finely engraved and tinted pages, bound in Gold, no 1 54 quotations, all postpaid, 15c. Popular Game of Authors, 15c. Clinton Bros. Clintonville, Ct.

E. N. FRESHMAN & BROS. Advertising Agents, 136 W. Fourth St., CINCINNATI, O.

Are authorized to receive advertisements for this paper. Estimates furnished free upon application. Send two stamps for our Advertisers' Manual.



CANADIAN PACIFIC RAILWAY.

Tenders for Rolling Stock.

TENDERS are invited for furnishing the Rolling Stock required to be delivered on the Canadian Pacific Railway, within the next four years, comprising the delivery in each year of about the following, viz:— 20 Locomotive Engines, 16 First-class cars (a proportion being sleepers), 20 Second-class Cars, do, 3 Express and Baggage Cars, 3 Postal and Smoking Cars, 240 Box Freight Cars, 100 Flat Cars, 2 Wing Ploughs, 2 Snow Ploughs, 2 Plungers, 40 Hand Cars.

The whole to be manufactured in the Dominion of Canada and delivered on the Canadian Pacific Railway, at Fort William, or in the Province of Manitoba.

Drawings, specifications and other information may be had on application at the office of the Engineer-in-Chief, at Ottawa, on and after the 15th day of MARCH next.

Tenders will be received by the undersigned up to noon of THURSDAY, the 1st day of JULY next.

By order, F. BRAUN, Secretary. Department of Railways and Canals, Ottawa, 7th February, 1880.

THE BURLAND LITHOGRAPHIC COMPANY (LIMITED)

CAPITAL \$200,000, GENERAL

Engravers, Lithographers, Printers AND PUBLISHERS,

3, 5, 7, 9 & 11 BLEURY STREET, MONTREAL.

THIS ESTABLISHMENT has a capital equal to all the other Lithographic firms in the country, and is the largest and most complete Establishment of the kind in the Dominion of Canada, possessing all the latest improvements in machinery and appliances, comprising:—

- 12 POWER PRESSES, 2 PATENT ENVELOPE MACHINES, which make, print and emboss envelopes by one operation. 1 PATENT LABEL GLOSSING MACHINE, 1 STEAM POWER ELECTRIC MACHINE, 4 PHOTOGRAPHING MACHINES, 2 PHOTO-ENGRAVING MACHINES.

Also CUTTING, PERFORATING, NUMBERING, EMBOSSING, COPPER PLATE PRINTING and all other Machinery required in a first class business.

All kinds of ENGRAVING, LITHOGRAPHING, ELECTROTYPING AND TYPE PRINTING executed IN THE BEST STYLE AND AT MODERATE PRICES.

PHOTO-ENGRAVING and LITHOGRAPHING from pen and ink drawings A SPECIALTY. The Company are also Proprietors and Publishers of the CANADIAN ILLUSTRATED NEWS, L'OPINION PUBLIQUE, and SCIENTIFIC CANADIAN.

A large staff of Artists, Engravers, and Skilled Workmen in every Department. Orders by mail attended to with Punctuality; and prices the same as if given personally.

G. B. BURLAND, MANAGER.

\$55.66 Agents Profit per Week, Will prove it or forfeit \$500. \$4 Outfit free, Montreal Novelty Co., Montreal, P. Q.

\$10 to \$1000 Invested in Wall St. Stocks makes fortunes every month. Book sent free explaining everything. Address: BAXTER & CO., Bankers, 7 Wall St., N.Y.



Canadian Pacific Railway.

Tenders for Rolling Stock.

TENDERS will be received by the undersigned up to Noon of MONDAY, the 23rd FEBRUARY inst., for the immediate supply of the following Rolling Stock:—

- 4 First-class Cars, 2 Postal and Baggage Cars, 60 Box Cars, 60 Platform Cars.

Drawings and specifications may be seen, and other information obtained on application at the office of the Engineer-in-Chief, Pacific Railway, Ottawa, and at the Engineer's Office, Intercolonial Railway, Moncton, N.B.

The Rolling Stock to be delivered on the Pembina Branch, Canadian Pacific Railway, on or before the 15th of MAY next.

By order, F. BRAUN, Secretary.

Department of Railways and Canals, Ottawa, 7th February, 1880.

The time for receiving the above Tenders is extended one week, viz.: to MONDAY, 1st March, and the time for delivery of a portion of Rolling Stock is extended to the 1st JUNE.

By Order, F. BRAUN, Secretary. 19th Feb., 1880.

The Scientific Canadian

MECHANICS' MAGAZINE AND PATENT OFFICE RECORD, A MONTHLY JOURNAL

Devoted to the advancement and diffusion of Practical Science, and the Education of Mechanics.

THE ONLY SCIENTIFIC AND MECHANICAL PAPER PUBLISHED IN THE DOMINION.

PUBLISHED BY THE BURLAND LITHOGRAPHIC CO.

OFFICES OF PUBLICATION, 5 and 7 Bleury Street, Montreal.

G. B. BURLAND, General Manager. F. N. BOXER, ARCHITECT & CIVIL ENGINEER, Editor.

TERMS:

One copy, one year, including postage, \$2.00. One copy, six months, including postage, 1.10. Subscriptions to be paid in ADVANCE.

The following are our advertising rates:—For one monthly insertion, 10 cts. per line; for three months, 9 cts. per line; for six months, 8 cts. per line; for one year, 7 cts. per line; one page of illustration, including one column description, \$30; half-page of illustration, including half column description, \$20; quarter-page of illustration, including quarter column description, \$10.

10 per cent. off on cash payments. INVENTIONS AND MACHINERY, &c., or other matter of an original, useful, and instructive character, and suitable for subject matter in the columns of the MAGAZINE, and not as an advertisement, will be illustrated at very reduced rates.

REMITTING MONEY.—All remittances of money should be in the form of postal orders. When these are not available, send money by registered letters, checks or drafts, payable to our order. We can only undertake to become responsible for money when sent in either of the above ways.

This journal is the only Scientific and Mechanical Monthly published in Canada, and its value as an advertising medium for all matter connected with our Manufactories, Foundries, and Machine Shops, and particularly to Inventors, is therefore apparent.

TO LET.

In those central premises forming the corner of Bleury and Craig Streets, and in the adjacent house on Craig Street—

- OFFICES, double and single. FLATS, admirably adapted for light manufacturing business, with or without steam power. Rent moderate.

Apply to G. B. BURLAND, No. 7 Bleury Street.

60 Queen Anne and Photo Cards, illuminated & perfumed in case, 10c. Atlantic Card Co., E Wallingford, Ct.

THE COOK'S FRIEND BAKING POWDER

Has become a HOUSEHOLD WORD in the land, and is a HOUSEHOLD NECESSITY

In every family where Economy and Health are studied. It is used for raising all kinds of Bread, Rolls, Pancakes, Griddle Cakes, &c., &c., and a small quantity used in Pie Crust, Puddings, or other Pastry, will save half the usual shortening, and make the food more digestible.



SAVES TIME, IT SAVES TEMPER, IT SAVES MONEY.

For sale by storekeepers throughout the Dominion, and wholesale by the manufacturer. W. D. McLAREN, UNION MILLS, 17-19-23-363 35 College Street.