

"TARGET BRAND"

Scale Destroyer

IS NOW THE PEER
OF OIL SPRAYS

FOR SAN JOSE SCALE, OYSTER-SHELL BARK-LOUSE,
APHIS AND SIMILAR PESTS

IT DESTROYS both insects and eggs. Experiment Stations and numbers who have used it declare **it has killed 100%**. Does not injure trees in the very least. Instantly prepared right in the field, and does not separate while spraying. We already have a number of orders in Canada, and they are still coming. Those who have used it once are ordering again. If your order is not in my hands by 15th February you may not be able to get a supply for Spring use. Use 1 in 20 of water before buds open. It goes from $\frac{1}{4}$ to $\frac{1}{2}$ farther than Lime Sulphur mixture. "Spray or Quit the Business," is the echo from the markets of the world, and Growers' Cash Balances substantiate it.

W. H. BRAND

Canadian Representative
and Salesman

Jordan Station, Ont.

Mention The Canadian Horticulturist when writing.

THE IMPORTANCE OF

Potash for all Fruit and Garden Crops

ought not to be underestimated by ORCHARDISTS AND TRUCK FARMERS, whose object it is to make the soil produce to the utmost of its capacity and yield at the same time PRODUCE OF FIRST-RATE QUALITY. DON'T FORGET THE FACT THAT POTASH PROMOTES MATURITY and counteracts the effect of an excessive amount of Nitrogen.

STABLE MANURE contains too much Nitrogen in proportion to its Potash and Phosphate, so that when applying a dressing of Stable Manure some Potash and Phosphate ought to be added as a balancer. While Sulphate of Potash is (according to eminent authorities) the form in which to apply POTASH to POTATOES, TOBACCO and SUGAR BEETS, Muriate of Potash will give equally good results with most other crops.

POTASH in the highly concentrated forms of SULPHATE OF POTASH AND MURIATE OF POTASH is obtainable of all leading Fertilizer Dealers.

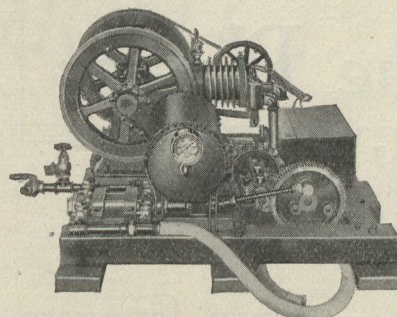
Pamphlets treating of the cultivation and fertilization of all crops on the farm will be sent FREE on application.

The Dominion Agricultural Offices
of the Potash Syndicate

1102, 1105 Temple Building - Toronto

Mention The Canadian Horticulturist when writing

WALLACE POWER SPRAYERS



Our "Invincible" Engine Outfit

Are now going out to customers wholesale. They are money-makers and the people are finding this out. They are built in many sizes and styles and are more than capable of doing what we represent. We GUARANTEE every one, and CARRY OUT the warranty. None of our machines need such a thing as an auxiliary

pump-handle or air-pump; THEY ARE FULLY UP TO THE MARK EVERY TIME. Our cart machines have NO SIDE DRAFT. ALL our machinery is UP where the driving wheels cannot drop grit into the friction parts; it is also easy of access and quick to adjust; easy to completely cover up and use as a working floor.

Our Duplex is the most powerful wheel-power machine built; it solves the problem of doing thorough spraying on the very largest apple trees without one cent of cost for power. Our Gasoline Engine outfits are automobile quality—the best that money can buy.

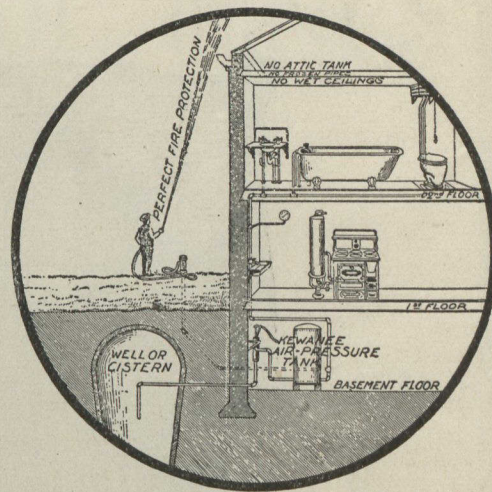
Orders are piling up at a rapid rate. Are you "getting busy" about yours? Your delay in this may cost you half the profit you could just as well get out of your plantation.

KEWANEE WATER SYSTEMS

(AIR PRESSURE)

Are now in use in over 5,000 Private Homes, Stock-farms, Greenhouses, Ranches, Hospitals, Charity Homes, Apartment Houses, Factories, Government Buildings, etc. Built in sizes to suit the smallest family or the largest town. Throw streams 100 feet high. Every-

thing out of sight and reach of frost. No failures. They are NOT expensive luxuries but ARE ECONOMICAL NECESSITIES, and give to the country or village resident the FULL SERVICE AND FIRE PROTECTION afforded in the cities. No elevated tank nuisances.



Regarding any of these increasingly popular goods, enquire of

W. H. BRAND

CANADIAN REPRESENTATIVE
AND SALESMAN

Jordan Station, Ont.

Mention The Canadian Horticulturist when writing