



and easy  
Knitting  
gs, Under-  
ns, etc.—  
mitted ten  
for far less

es. Besides  
make good

No. 623.  
y for Type-  
r knitting

OWN, ONT.

Wells  
soil  
2.00  
ed

us to-  
learn  
u can  
profit-  
ness  
ells for  
an in-  
of but

utfits,

faster  
than  
her

E  
Y

,Ltd.

TILE

Cost  
.00 to  
6.00  
per  
000

nd or  
ower

nd for  
atalog

he Co.

ND  
D

ctors

College  
ogue

nt, Jr.  
tant

OCTOBER 24, 1912

THE FARMER'S ADVOCATE.

1867

QUESTIONS AND ANSWERS.  
Miscellaneous.

OVERWORKED TELEPHONE  
LINE.

Are fifteen telephones not all that are allowed on one line? We have twenty-one here, and it is too many on one line.

Ontario.

Ans.—We are not aware of any such general restriction.

SOWING ONION SEED.

Would you advise sowing black onion seed in the fall? If so, please state the time to sow, and the way to fit up the ground for the seed. Also, do onions require much hoeing?

W. A. M.

Ans.—Many growers do not believe in planting onion seed in the fall, as the seed can only be sown on light soils, such as retain no moisture during the winter season. Light soils can always be worked early in the spring, and wet soils are late, so little is gained even when it is sown on the light land. There is more risk in sowing in the fall, and it would be advisable to work the land well this fall, and get it all ready to put in the seed the first thing in the spring. The onion crop requires a large amount of labor, including hoeing.

STIFLE JOINTS SWELL.

When my sucking foal was about two months of age, there appeared on its stifle joint two very large puffs. They do not hinder it, but they look bad, and do not seem to be disappearing any. Would you advise sweating them out, or will they disappear if left alone?

H. J. P.

Ans.—It is altogether likely that the swellings are the result of partial dislocation of the patella. Get a blister made of 1½ drams each of biniodide of mercury and cantharides, mixed with 2 ounces of vaseline. Clip the hair off the parts. Tie so he cannot bite them. Rub well with the blister on the front and inside of the joint once daily for two days. On the third day wash off and apply sweet oil. Let loose now in a box stall, and oil daily. Keep the colt quiet, and blister every four weeks for a few months.

A Million Dollars Saved  
by Creosoting Cross-Ties.

(Press Bulletin of the Dominion Forestry Branch.)

The annual replacement of cross-ties in Canadian railway lines is about 10,000,000, according to statistics compiled by the Forestry Branch of the Department of the Interior. The average life of a tie, i. e., seven years, could be prolonged to seventeen years, if proper preservative treatment were adopted, and an annual saving of 350 million feet, board measure, of timber, could be effected. This is equivalent to three years' cut of one of the very largest mills in the country. While the initial expense of creosoting would bring the cost per tie from 58 to 93 cents, it would save \$1,400,000 annually.

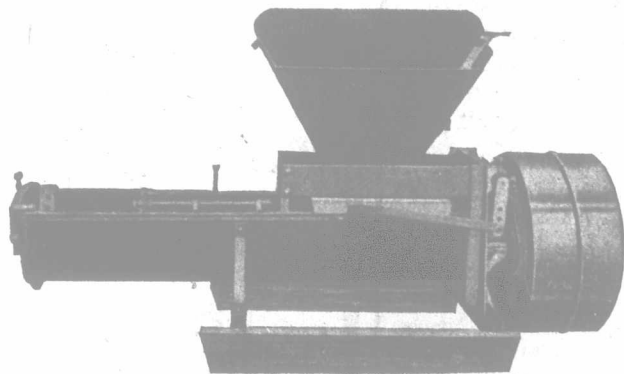
Since 1910, two timber-treating plants have been established, treating, in 1911, 206,209 ties, or 1.5 per cent. of the total cut.

The number of ties purchased in the Dominion in 1911 was 13,683,770, an increase of 4,469,808, or 48.5 per cent. over 1910.

The rapid development of railways in the Western Provinces is largely responsible for this increase.

Eighteen kinds of wood were used. Jack-pine, with 40 per cent.; tamarack, with 19 per cent.; Douglas fir (used to a very great extent in new electric lines in British Columbia), with 14 per cent., and hemlock, with 12 per cent., were the leaders. A remarkable change is that of cedar, in decreasing from 40 per cent. to 5.4 per cent. of the total.

Bacon—"They say that much of a man's interest in woman is due to his inability to understand her. Egbert—"If that is so, I can't understand why he should ever lose interest."



BESSER CONCRETE MACHINERY

Continuous Mixer

We manufacture: Power Cement Drain and Sewer Tile Machines; Hand Cement Drain and Sewer Tile Moulds; Power Cement Brick Machines; Hand Cement Block Machines; Cars and Track for Concrete Plants; Power Tamp Machines for Blocks and Tiles; also Windmills, Towers and Tanks. Write for catalogues.

Woodstock Wind Motor Co., Limited, Woodstock, Ont.

One Thousand Farmers Wanted  
To Reply to This Advertisement

SOME people declare that farmers will not answer advertisements—that both stock-raisers and farmers are indifferent to their own interests. We think otherwise. As a matter of fact, we know that farmers and stockmen, alike, are always ready to investigate any proposition which is worth their serious consideration. Here's proof:

A year ago we made the statement that the systematic use of

Caldwell's Molasses Meal

would increase the value and the earning capacity of any farmer's stock. Both farmers and stockmen promptly asked to be shown. We gave reasons for the statement, and hundreds proved it true, every word of it.

Now we want one thousand farmers to write direct to us and ask for reasonable proofs of the claims we make throughout our advertising for

CALDWELL'S  
MOLASSES  
MEAL

Here are some of these claims worded as definitely as we know how. Consider them fairly and squarely, as they affect your business as farmer and stockman:

Caldwell's Molasses Meal contains 84% of Pure Cane Molasses and 16% of a special variety of edible moss known to have digestive and antiseptic action on the intestines—the process of manufacture makes the Meal absolutely uniform in quality.

Caldwell's Molasses Meal has enormous feeding value, and possesses wonderful therapeutic properties. Its systematic use keeps animals in perfect health and free from worms and intestinal parasites. Besides, it is the only safe and convenient form in which molasses can be fed to stock.

Caldwell's Molasses Meal costs nothing to use, as it takes the place of an equal quantity of cereal.



It will effect a saving of 25% in your forage account.

Caldwell's Molasses Meal will increase the earning capacity of horses and cows, while adding to their value.

Its use keeps horses free from worms and in splendid fettle, they work better, live longer and are worth more at any stage. It keeps cows fit, fat and contented, hence they give more milk. It is a prompt "conditioner" of steers, sheep and hogs.

Caldwell's Molasses Meal will positively increase the cash value and earning capacity of your stock, and at the same time reduce your general forage charges.

These claims are absolutely true. We want to mail you the proofs. It will pay you to consider them well. Write to-day—now! Clip out coupon—mail to us, and we will send you full particulars.

The Caldwell Feed Co.,  
LIMITED  
Dundas, Ontario

When writing advertisers please mention The Farmer's Advocate