

If not called for within one month, the Postmaster will please send to the School Inspector.

JOURNAL OF

Province of



EDUCATION,

Ontario.

VOL. XXVI.

TORONTO, AUGUST, 1873.

No. 8.

CONTENTS OF THIS NUMBER.

PAGE

I. HIGH SCHOOL-HOUSE, DORCHESTER	113
II. PAPERS ON BOOKS AND READING.—(1) Sale of Old Books; (2) Modern Literature; (3) Time for Reading	118
III. PAPERS ON EDUCATION IN VARIOUS COUNTRIES.—(1) N. Y. State Teachers' Convention—Libraries; (2) The Jesse Ketchum Memorial Fund, Buffalo; (3) Toronto Normal School; (4) Miscellaneous Educational Items	119
IV. EDUCATION OF FARMERS.—(1) Practical Education of Farmers; (2) The Better Education of Farmers.....	121

CONTENTS OF THIS NUMBER—Continued.

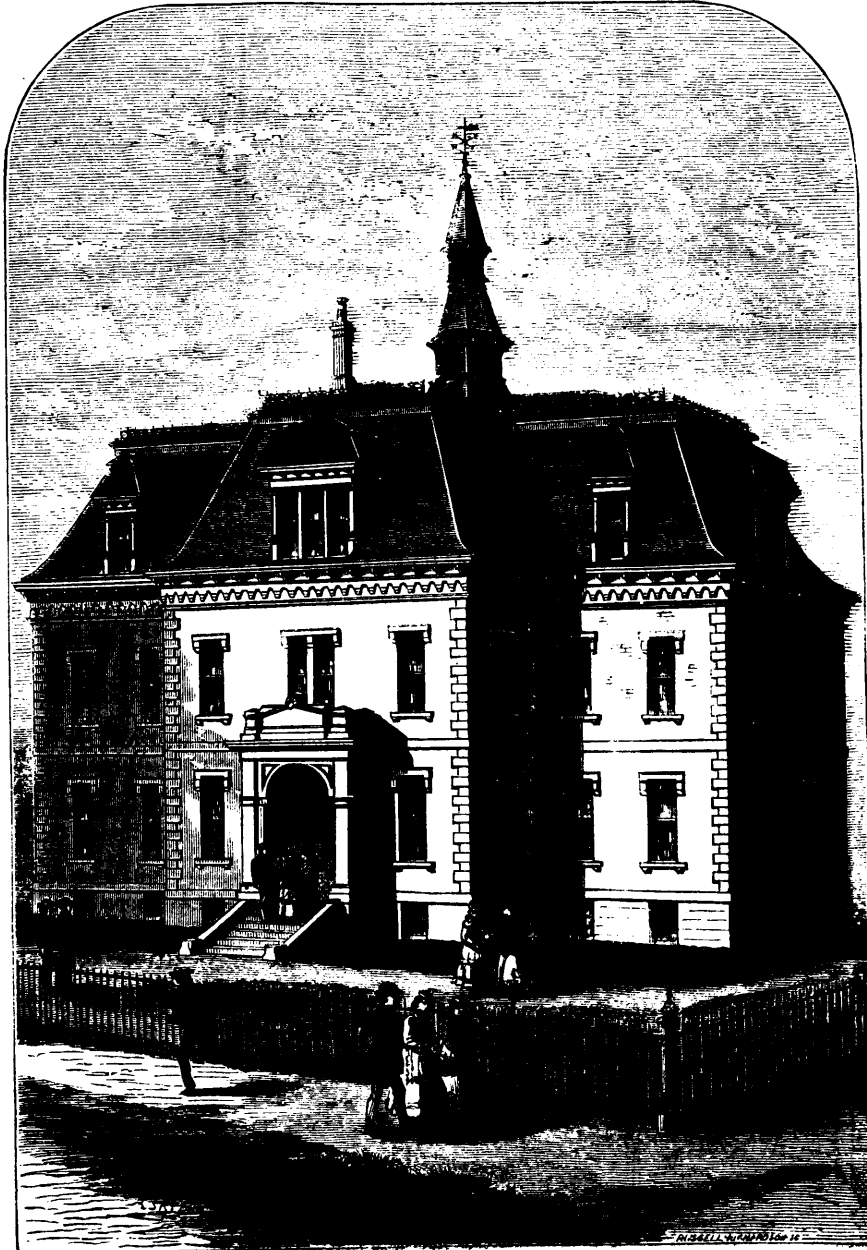
PAGE

V. PAPERS ON PRACTICAL EDUCATION.—(1) Experience vs. Inexperience in Teachers; (2) Too Much of Study; (3) How I made my School-Room Attractive; (4) Illustrations in Education	123
VI. CORRESPONDENCE	124
VII. MONTHLY REPORT ON METEOROLOGY OF THE PROVINCE OF ONTARIO	125
VIII. BIOGRAPHICAL SKETCHES.—(1) The Hon. W. B. Robinson; (2) T. D. Harris, Esq.; (3) Baron Liebig	126
IX. EDUCATIONAL INTELLIGENCE	126
X. DEPARTMENTAL NOTICES	128

HIGH SCHOOL-HOUSE, DORCHESTER.

DESCRIPTION.

THIS beautiful structure had been commenced and was well advanced in its construction when Dorchester became a part of the city, January, 1870, after which time the finishing and furnishing were carried out under the direction of the Committee on Public Buildings. The site of the building is at the corner of Dorchester Avenue and Centre Street. The structure is two stories high, exclusive of basement and attic. The walls of the superstructure are of brick, faced externally with pressed bricks. The trimmings of the doors and windows, and also the angle quoins, are of Nova Scotia freestone. The basement is, externally, about five feet high above the ground,



and is of granite. The walls are finished with a handsome cornice, composed partly of stone, and partly of wood and bricks, with copper gutters. Above the main cornice is a high Mansard roof, which is surmounted by an ornamental ventilating turret, about thirty feet high. The main building is eighty feet by forty-three feet. Projecting from the middle of each of the two longer sides is a wing, sixteen feet by thirty-four feet, and in front of each wing is a brick and stone porch, or vestibule, about seven feet by twelve feet. The wings are occupied by the staircases and cloak-rooms. In the basement is a chemical lecture-room and laboratory, a room for the steam-heating apparatus, coal-room, and a room on each side of the building for dry-earth closets,

HIGH SCHOOL-HOUSE, DORCHESTER, MASS.